

# HELLY HANSEN WORKWEAR 2022



**ALIVE**  
SINCE / 1877

 **TRUSTED BY  
PROFESSIONALS**







## CONTENTS:

OUR HERITAGE.....	4
SUSTAINABILITY & RESPONSIBILITY.....	6
CONTACT US.....	8
TECH CLINIC.....	9
US STANDARDS.....	24

## TRADES.....34

KENSINGTON.....	36
OXFORD.....	40
LUNA.....	45
MANCHESTER.....	48
WOMEN'S MANCHESTER.....	54
GRAPHIC.....	58

## HI VIS.....60

POTSDAM.....	61
ALTA.....	62

## RAINWEAR & FISHING.....66

## WINTER.....82

## BASELAYER.....88

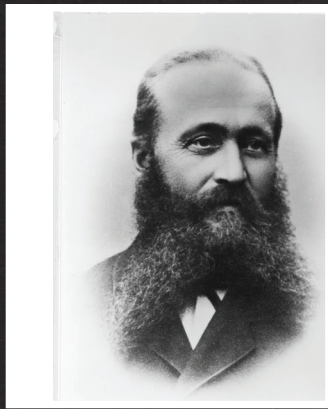
## MIDLAYER.....96

## FLAME RETARDANT.....100

## ACCESSORIES.....104

SIZE GUIDE.....	116
INDEX.....	118





# INNOVATION SINCE 1877

From our home in Norway, Helly Hansen has been making professional grade gear that helps people stay and feel alive for the last 140 years.

In 1877, after many years at sea, Norwegian captain Helly Juell Hansen and his wife, Maren Margarethe, began producing oilskin jackets, trousers, sou'westers and tarpaulins, made from coarse linen soaked in linseed oil. Since then, the legacy of Helly Hansen lives on, developing and creating a long list of first-to-market innovations.

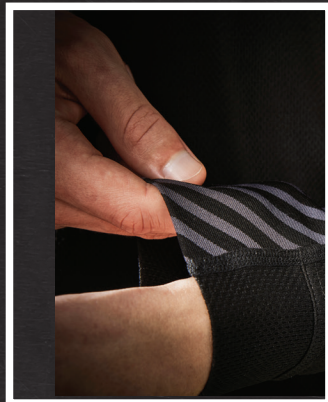


## 1949 HELOX - THE NEXT EVOLUTION IN WATERPROOF

Helox waterproof fabric featured a thin sheet of translucent PVC plastic that was sewn into coats to make them waterproof. It was revolutionary technology that became the must-have protection for outdoor use. With a production of 30,000 coats each month, the success was almost immediate and was used by the Norwegian delegation at the 1952 Olympic Games in Helsinki.

## 1961 FIBERPILE - THE TECHNICAL MIDALYER IS INVENTED

Helly Hansen partnered with Norwegian Fiber Pile Inc. And developed the original Fiberpil - the first fleece. It featured a high warmth to weight ratio and maintained its thermal qualities even when wet, making it a favorite of lumberjacks and outdoor enthusiasts. The concept lives on and the modern version of Propile is still in production today.



## 1970 LIFA - THE BIRTH OF TECHNICAL BASE LAYER

HH's LIFA® revolutionized the industry with the introduction of the first technical base layers. LIFA® moves moisture away from the body allowing users to stay warm and comfortable. It has been used by professionals on every ocean, many of the world's tallest peaks and was included in Outside Magazine's list of The Most Influential Gear of All Time in 2012. LIFA® remains the cornerstone of what we believe is the best technical base layer available today.

## 1972

Helly Hansen launches PVC foam with closed cells for use in life jackets. The foam is the preferred flotation material 30 years later.



## 1984 HELLY TECH® - THE WATERPROOF AND BREATHABLE SOLUTION

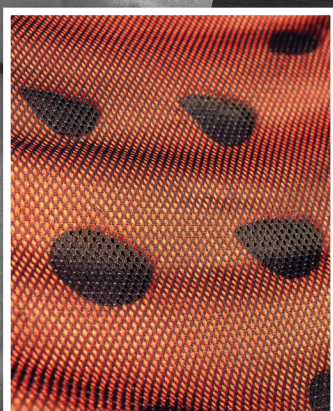
Helly Tech® waterproof and breathable fabric was launched in the 1980's, winning awards and setting the new standard for performance and protection. It also provided the final layer for the 1986 introduction of the Helly Hansen 3-Layer System™, an industry - first program educating people on how to dress for the outdoors. Today, Helly Tech® fabrics are engineered to deliver the specific demands of professional skiers, sailors, and at workplaces around the world.





## 1990 PROWOOL - THE PERFECT BLEND OF LIFA® AND MERINO

The Prowool (renamed HH Lifa® Merino) base layer for cold weather conditions was launched in the late 90's, combining Lifa® Stay Warm Technology™ with Merino wool for both moisture transport and added warmth. Designed for professionals facing the coldest conditions it quickly became the go-to piece for performance, warmth and comfort in extreme environments.



## 2012 H'FLOW™ - A BETTER SOLUTION FOR TEMPERATURE REGULATION

Helly Hansen introduced the new H'FLOW™ Technology in 2012 with the H'FLOW™ Jacket, which won an Award for Design Excellence from the Norwegian Design Council. The patented H'FLOW™ Jacket features an airflow venting system and a protective barrier. It allows adventurers to efficiently regulate their body temperature.



## 2018 LIFA® MAX - OUR WARMEST BASE LAYER IN COLD CONDITIONS

Helly Hansen introduces its warmest base layer to date by thickening the already tried and tested Lifa® fibers to produce a warmer, lightweight and flexible garment. The enhanced, unrivaled warmth and comfort is why we believe Lifa® Max is the best technical base layer available today.

## 2019 LIFALOFT™

With increased warmth, lightweight insulation and superior moisture management properties, LifaLoft™ technology is an insulation revolution that will keep you warmer with less weight and bulk compared to traditional polyester insulation. Developed in cooperation with Primaloft®, LifaLoft™ is a combination of Lifa®'s unique insulation structure and Primaloft®'s extensive knowledge in synthetic insulation.



## 2022 BRZ - Climate Regulating Comfort

Helly Hansen Workwear launched BRZ. Designed to deliver climate regulating comfort and versatility, BRZ is a product construction bolstered by lightweight fabric and mechanical ventilation.



## FOR THE PEOPLE

---

The textile and garment industry is made up of a complex supply chain stretched all over the globe. It covers industries such as chemical suppliers, garment manufacturers and cotton crops often situated in countries with weak social regulations.

Helly Hansen has been a member of the Norwegian Ethical Trade organization since 2003 and their main support goes to helping us map our supply chain and engage in projects which improve people's rights and fair payment. Additionally, we have a close relationship with a majority of our Tier 1 and Tier 2 suppliers. Cooperation based on trust and mutual respect has been a part of our core values since the founding of Helly Hansen in 1877.

Moreover, our manufacturing code of conduct, which is communicated and signed by all our Tier 1 and Tier 2 suppliers, is based on key UN and International Labor Organization conventions and documents. We perform social audits on a yearly basis with all our Tier 1 suppliers, including approved sub-contractors. However, to achieve economic and social progress, our main focus is on social dialogue projects. Social dialogue is an integral aspect of achieving workplace harmony, leading to a better organization and greater productivity.

WE SUMMARIZE OUR FOCUS FOR THE PEOPLE IN FOUR MAIN AREAS:

1. Building long-term relationships based on trust and mutual respect.
2. Manufacturing code of conduct communicated and signed by all Tier 1 suppliers, including sub-contractors.
3. Yearly social audits.
4. Enabling "social dialogue" in the workplace to strengthen workers' rights as well as performance and productivity.

### **Sustainability & Responsibility**

Helly Hansen strongly believes that long term commercial success can only be achieved by respecting, protecting and promoting ethical values, human rights, labor rights and the environment. We continuously work to improve our policies and practices, enabling us and our suppliers to achieve the highest standard in terms of social and environmental values. We drive improvement for people, and for the planet, working towards making a positive impact on the lives we touch and the environment we are all dependent on protecting.



# FOR THE PLANET

---

Helly Hansen's DNA is intertwined with water. The brand was founded by a sea captain in 1877 on the Norwegian Fjords and to this day provides professional grade gear for use on water and snow around the world. Our love of water has led us to choose water as our leading sustainability effort. Apparel production uses a lot of water and is a major contributor to water pollution. This is why we will focus our research efforts, our engineering developments and consumer awareness campaigns around ensuring water around the world stays as clean as the Norwegian fjords. We are passionate supporters of many other environmental issues and will continue to be proactive participants in improving the overall standards of the Outdoor Industry but within water issues we will be thought leaders, research pioneers and drive awareness of clean water challenges to our consumers and partners across the value chain.

## **OUR ENVIRONMENTAL FOCUS AREAS ARE BUILT ON 3 MAIN PILLARS WHERE WE FEEL WE CAN HAVE THE BIGGEST IMPACT:**

### **1. EFFICIENT USE OF WATER, CHEMICALS & ENERGY**

- Helly Hansen has been prioritizing bluesign® approved materials for over 10 years and today almost 90% of our main fabric is bluesign® approved. Bluesign is an in-put stream management system controlling that only allowed chemistry is applied, as well as it reduces water and energy consumption and air emission on production sites.
- Water consumption has always been a challenge in the textile industry. Here we have been driving change beyond regulations and certifications since the 70's by only using water-free dyeing technologies on our LIFA® base layers. We are now adopting these types of technologies on a larger scale, helping us save even more water than before.

### **2. TRACEABILITY AND TRANSPARENCY**

- We are proud of the close cooperation we have with our suppliers and nominate 100% of the materials used in our garments, down to every detail. We also have a relationship with all our material suppliers (Tier 2) which ensures traceability of all the components we are using.
- Helly Hansen has identified the focus materials and chemicals we use requiring full transparency back in the supply chain. Some of the focus materials and chemicals we use are down, wool, PVC, fluorocarbons and flame-retardant treatments.

### **3. CLOSED LOOP SYSTEMS**

- The biggest favour we can do for the environment is to produce less stuff and instead invest in products with quality and longevity. We don't compromise on quality and want our products to be alive for as long as possible. We have stringent quality controls in the laboratory, in production and via field testing with our ambassadors ensuring products that live up to their expectations and beyond.
- Revitalization of materials and products helps us reduce our environmental impact, makes us invest in research and also help adopting existing solutions and technologies related to closed loop models and materials.



# CONTACT US



## AUSTRIA

Helly Hansen Austria GmbH  
Am Modenapark 10/17  
c/o AMT Steuerberatungsgesellschaft  
Wien, A-1030  
Phone: +43 720 569 080  
Email: Workwear.austria@hellyhansen.com



## BELGIUM & LUXEMBURG

Helly Hansen NV  
Holtum Noordweg 77  
NL-6121 RE Born  
Phone: +32 (0)380 81543  
E-mail: ww.bel@hellyhansen.com



## CANADA

Helly Hansen-CA  
12033 Riverside Way Suite 301  
Richmond, BC V6W 1K6  
Phone: 1-800-435-5901  
E-mail: Orders.Work-CAN@HellyHansen.com



## CHILE

Segurycel S.A.  
Av. Ejército Libertador N 740  
CL-Santiago  
Phone: +56 2 7075700  
E-mail: workwear@hellyhansen.no



## CZECH

Helly Hansen Czech Republic s.r.o.  
Strakonicka 3309/2e  
150 00 Praha 5  
Phone: +420 227 031 827  
E-mail: ww.czi@hellyhansen.com



## DENMARK

A/S Helly Hansen  
Visiting Address:  
Lergravsvej 59 2. sal  
2300 København S  
Postal Address:  
P.O. Box 22  
DK - 2100 KØBENHAVN Ø  
Phone: +45 80 88 55 24  
E-mail: workwear@hellyhansen.no



## ESTONIA

Tamec Trade OÜ  
Mustamäe tee 29  
EE-10613 Tallinn  
Web: www.tamectrade.ee  
Phone: +37 268 16 611  
E-mail: info@tamectrade.ee

Stokker AS  
Peterburi tee 44  
11415 Tallinn  
Web: www.stokker.ee  
Phone: +37 262 01 111  
e-mail: stokker@stokker.com



## FINLAND

Helly Hansen Oy  
Visiting address:  
Teknobulevardi 3 - 5  
FI - 01530 Vantaa  
Phone: +47 69 24 91 50  
Customer service:  
E-mail: workwear@hellyhansen.no

## FRANCE



Helly Hansen France SARL  
Parc des Glaicins, 11 Rue du Pre Faucon  
F-74940 Annecy le Vieux  
Phone: +33 458020070  
E-mail: ww.fr@hellyhansen.com



## GERMANY

Helly Hansen Deutschland GmbH  
Balanstrasse 73 / Haus 10  
D-81541 München  
Phone: +49 (0)89 200084030  
E-mail: ww.de@hellyhansen.com



## HUNGARY

Helly Hansen Magyarország Kft.  
Rétköz u. 5.  
1118. Budapest  
Phone: +36 1 789 0533  
E-mail: ww.hu@hellyhansen.com



## ITALY

Helly Hansen Italy SRL  
Via San Bartolomeo 777/7  
19126 La Spezia  
Phone: +39 02 89877800  
E-mail: ww.it@hellyhansen.com



## THE REPUBLIC OF IRELAND & NORTHERN IRELAND

PMG - Premier Marketing Group  
Unit G2 Calmount Park  
Calmount Road, Dublin 12  
Phone: +353 01 4600723  
E-mail: conor.lloyd@hellyhansen.com



## NETHERLANDS

Helly Hansen BV  
Holtum Noordweg 77  
NL-6121 RE Born  
Phone: +31 (0)46 7440074  
E-mail: ww.nl@hellyhansen.com



## NORWAY

Helly Hansen AS  
PO box 1653 Vika  
N-0120 Oslo, Norway  
Visiting address:  
Munkedamsveien 35  
N-0250 Oslo  
Phone: +47 69 24 91 50  
E-mail: Workwear@hellyhansen.no



## POLAND

Helly Hansen Sp. z o.o.  
Pory 78  
02-757 Warszawa  
Phone: +48 22 243 67 97  
E-mail: ww.pl@hellyhansen.com



## PORTUGAL

Helly Hansen Spain suc. En Espana  
Ronda Maiols no 1, 4a Planta, Despachos 419-421  
E-08192 Saint Quize del Vallés (Barcelona)  
Phone: +34 931770617  
E-mail: Workwear.ec@hellyhansen.com



## RUSSIA

Helly Hansen Russia



Mosfilmovskaya street d. 54, s.1  
RU-119590 Moscow  
Russia  
Phone: +74954199901  
E-mail: info.russia@hellyhansen.com



## SLOVENIA

ZAVAS d.o.o.  
Špruha 19  
SI-1236 Trzin  
Phone: +386 1 5610 420  
E-mail: prodaja@zavas.com



## SPAIN

HELLY HANSEN SPAIN Sucursal en España  
Ronda Maiols 1  
08192 Sant Quirze del Vallés  
Phone: +34 931 770 617  
E-mail: workwear.spain@hellyhansen.com



## SWEDEN

Helly Hansen AB  
Visiting Address:  
Stormbyvägen 2-4, S-163 91 SPÅNGA  
P.O. Box 55 S-163 91 SPÅNGA  
Phone: +46 0200 896 380  
E-mail: workwear.sweden@hellyhansen.com



## SWITZERLAND

Helly Hansen (Schweiz) AG  
Haus 9, Showroom 4.51  
Thurgauerstrasse 109  
8152 Glattpark  
Phone: +41 (0)44 5785340  
E-mail: workwear.switzerland@hellyhansen.com



## UNITED KINGDOM

Helly Hansen UK Ltd  
Unit G3 (A)  
Birbeck House  
Colliers Way, Phoenix Park  
NG8 6AT Nottingham UK  
Phone: +44 (0) 115 979 5997  
E-mail: workwear.uk@hellyhansen.com



## USA

Helly Hansen (U.S.) Inc.  
14218 8th Street E, Suite 100a  
Sumner, Washington 98390  
Toll Free: +1 866-435-5902  
E-mail: CustomerService-USA@hellyhansen.com

## EXPORT

(Excluding above mentioned countries and North America)

Helly Hansen AS  
Munkedamsvn. 35, 6.fl, PO box 1653  
N-0250 Oslo, Norway  
Phone: +31 610201389  
E-mail: ww.export@hellyhansen.com

Export manager:  
Patrick Purvis  
patrick.purvis@hellyhansen.com



A close-up photograph of a technical jacket. The jacket features a bright yellow-green upper section, a black lower section, and a grey mesh panel with diagonal stripes. A yellow-green zipper runs along the side. Two black fabric tabs are visible on the black section.

# TECH CLINIC

A GUIDE TO OUR TECHNOLOGIES







# 3-LAYER SYSTEM



BASELAYER

## DRY.

Often referred to as second skin, Helly Hansen base layers are vital to temperature regulation and moisture management in any setting. As you work hard, our LIFA® Technology moves moisture away from the skin, leaving you dry and comfortable. Our current range of base layers are categorized by warmth level, allowing you to select the best fit for your need.



MIDLAYER

## WARM.

When faced with colder conditions, Helly Hansen thermal midlayers trap warm air from your body to insulate when you need it most. As you warm up, some of our midlayers can ventilate to expel excess heat and like our base layer range, also allow moisture to pass through, keeping you dry and warm for long days on site. Midlayers should always be selected according to the conditions and activity you're faced with.



PROTECTIVE  
LAYER

## SAFE.

The final component to the 3-layer system is an outer, protective outer layer. Using our award-winning Helly Tech® waterproof membrane, we have been able to create a wide range of durable, protective and seam sealed jackets for all-season use. It is important that the outer layer is also breathable, allowing for proper ventilation and moisture management to combat overheating. Depending on the temperature, the outer layer can protect you from wind, rain or snow, making it a vital piece to any collection.



HELLY HANSEN INTRODUCED THE 3-LAYER SYSTEM TO THE INDUSTRY IN THE EARLY 70S, AND WE'VE BEEN PUSHING IT FORWARD EVER SINCE BY CONSTANTLY IMPLEMENTING NEW TECHNOLOGIES IN OUR GEAR. OUR UNIQUE FLEXIBLE SYSTEM ENABLES YOU TO STAY COMFORTABLE AND PROTECTED WHATEVER WORKING CONDITIONS YOU ARE EXPOSED TO, HEAT OR COLD, RAIN OR SNOW.





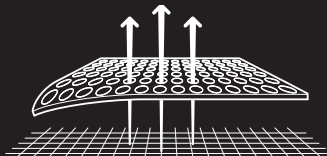
## WARM. DRY. COMFORTABLE.

Launched in the early 1970s, LIFA® is based on a yarn technology that has been tested and developed over the years. The key functions of LIFA® deliver both moisture management and insulation, moving moisture away from the skin, while transporting perspiration to the surface of the fabric, where it evaporates. In 2006 LIFA® was combined with non mulsed Merino wool to create the best performing base layer to date.

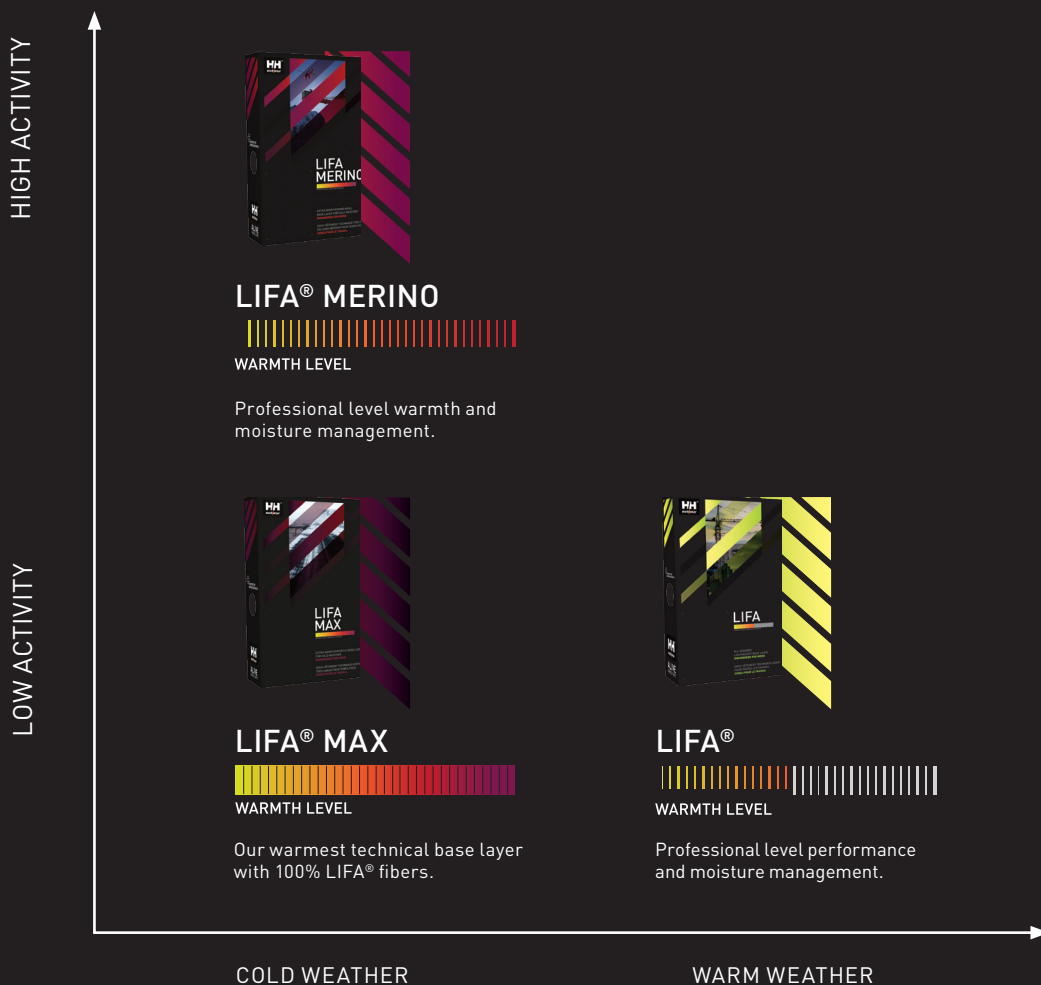
LIFA® is a hydrophobic fiber that prohibits the absorption of liquid. The LIFA® fibers are used on the first membrane layer of base layer garments, the layer nearest to the skin. When the first yarn layer is combined with an additional layer with hydrophilic (moisture absorbing) properties, the sweat from the body is moved away from the skin and transported to the second layer, where it is absorbed. This enables the consumer to stay warm, dry and comfortable.

### HOW LIFA® WORKS

LIFA® stay warm technology moves sweat away from your skin, keeping you warmer for longer



LIFA® is an ultra-light weight base layer fabric that works perfectly in the autumn and winter. HH LIFA® delivers light insulation and moisture management through its 100% single layer LIFA® fibers. The LIFA® technology works best when layered under another garment, as the more garments you wear, the further the sweat and moisture will be transported out of the fabric and away from your skin.



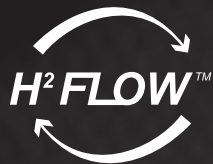




STAY WARM  
TECHNOLOGY  
MOVES SWEAT AWAY

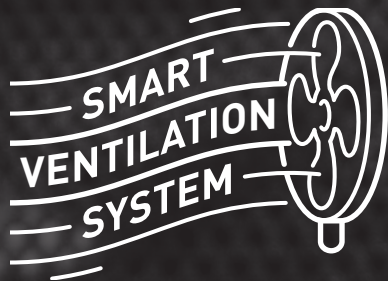
HH  
workwear





## WARMER. COOLER. DRIER.

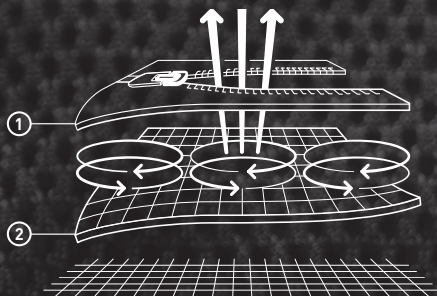
HELLY HANSEN JACKETS WITH THE H²FLOW™ TECHNOLOGY COOLS YOU DOWN 20% FASTER THAN COMPETITOR JACKETS WITHOUT THE TECHNOLOGY, MEASURED ON THE SAME WEIGHT AND INSULATION.



H²Flow™ allows you to control your body's temperature. The technology optimizes insulation, using air pockets or holes that store warmth from the body and, at the same time, allows you to control heat and airflow through ventilation zippers, enabling the cold air to enter and the warm air to exit.



Negative or positive air space is created by adding or subtracting fabric on the inside of the garment to allow this extra air space to be filled with air heated up by the body. In both cases, the purpose is to create pockets of air in strategic areas of the body, trapped in these channels or spaces. The air contained in these pockets heats up from the body heat of the wearer, and keeps you warm.



### HOW H²FLOW™ WORKS

Ventilation zippers let cold air in if you get too warm. Air pockets or holes store warmth from your body, so all H²Flow™ jackets have a high warmth to weight ratio.





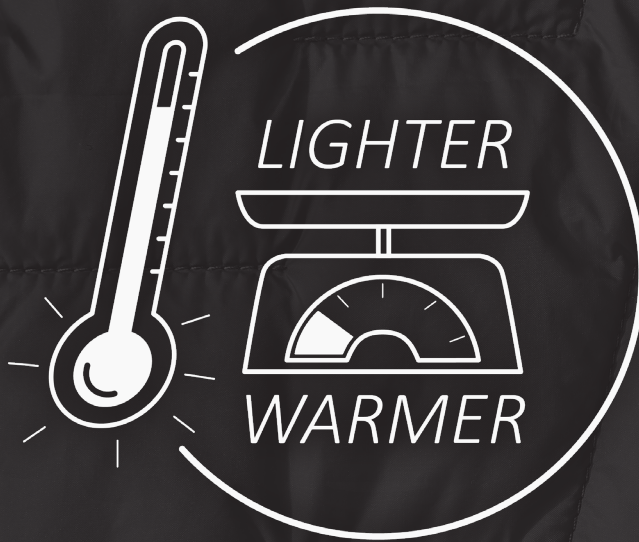


# lifaloft™

INSULATION BY **PRIMALOFT**®

## LIGHTER. WARMER.

DEVELOPED IN COOPERATION WITH PRIMALOFT®, LIFALOFT™ IS A COMBINATION OF LIFA®'S UNIQUE INSULATION STRUCTURE AND PRIMALOFT®'S EXTENSIVE KNOWLEDGE IN SYNTHETIC INSULATION.



## LIGHTER AND STILL WARMER THAN STANDARD INSULATION

With increased warmth, lightweight insulation and superior moisture management properties, LIFALOFT™ technology is an insulation revolution that will keep you warmer with less weight and bulk compared to traditional polyester insulation.



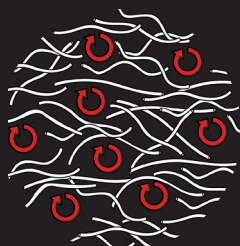


## HOW LIFALOFT™ WORKS

The unique hydrophobic properties of the Lifa® fibers deliver moisture management necessary for high endurance activities, whilst the PrimaLoft® structure offers high insulation and breathable performance insulation for all active pursuits.

LIFALOFT™ insulation is based on LIFA® fiber technology that is engineered into a lightweight structure that traps more air than standard polyester, providing extra warmth, the fiber does not absorb water, making the insulation technology ideal for intense activities in variable winter or summer conditions.

## TECHNICAL DETAILS



LIFALOFT™'s insulation creates more air pockets, giving more warmth



HYDROPHOBIC

LIFA® fibers have better moisture transportation properties



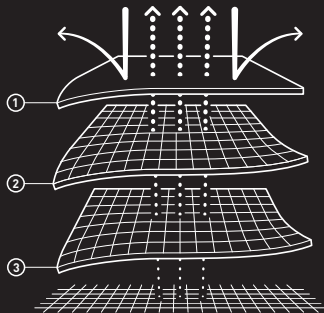
A better environmental option



# HELLY TECH®

## WATERPROOF. BREATHABLE. GUARANTEED.

Helly Tech® is the waterproof and breathable outer layer between you and the elements. Its unique membrane stops water molecules going in, but lets moisture molecules escape. Keeping you dry from the outside and comfortable on the inside.



### HOW HELLY TECH® WORKS

1. DWR treated outer fabric is windproof and water-repellent
2. Waterproof and breathable membrane or coating
3. Highly breathable inner fabric, mesh or lining



Helly Tech® is constructed with Polymer Polyurethane (PU ) based membranes and coating technologies. The PU membrane gives softness and stretch to the fabric, while the coating allows waterproofness and breathable qualities. Helly Tech® is made either with Hydrophilic barrier membranes or Micro-porous membranes, depending on the end-use purpose of the fabric.

The Hydrophilic barrier works on an osmotic principle, keeping salts from entering and blocking the pores. The Micro-porous PU membranes are hydrophobic- "water hating" polymers. This membrane construction is responsible for the waterproofness of Helly Tech®, making the pores up to 20.000 times smaller than water droplets, while allowing breathability since the pores are up to 700 times larger than a water vapor molecule, allowing the evaporation of sweat and heat.

Helly Tech® is actually more than just a fabric – it is a combination of a DWR-treated outer fabric, a highly breathable and waterproof membrane, fully sealed seams and often a highly breathable inner fabric, mesh or lining.

The seams of the products are taped over with a waterproof ribbon and glue, preventing any water from entering the small gaps between the stitches of the seams.



THERE ARE NUMEROUS TYPES OF HELLY TECH® FABRICS. THE MAIN DIFFERENTIATOR IS THE NUMBER OF PLIES (OR LAYERS) THE FABRIC IS BUILT FROM.

#### HELLY TECH® PROFESSIONAL

Extremely waterproof and breathable designs and constructions. For highly aerobic, extremely wet or unusually long-lasting activities in extremely harsh conditions.

#### HELLY TECH® PERFORMANCE

Highly waterproof and extra breathable sport specific designs and constructions. For a wide range of high performance outdoor activities during highly challenging, changing and unpredictable weather conditions.

#### HELLY TECH® PROTECTION

Fully waterproof, windproof and breathable fabrics and constructions. For all situations and weather conditions where protection from the elements is needed.



#### 3 PLY CONSTRUCTION

Outer fabric + membrane and inner fabric bonded together for lightweight, quick drying and durability.



#### 2,5 PLY CONSTRUCTION

Outer fabric + membrane or coating bonded together with protective print on the inside for extreme lightweight and packability.



#### 2 PLY CONSTRUCTION

Outer fabric + membrane or coating bonded together for breathable waterproofness, protected by inside lining or mesh adding warmth and comfort.

### LAB TESTS

#### WATER COLUMN, ISO 811 and JIS L 1092-B1

Gives the value pressure mm of water held back by fabric. 10.000mm is the same pressure you would experience diving to 10m or equal to the pressure from a fire hose.

#### BREATHABILITY, JIS L 1099-1985-B1

Gives the value of g/m<sup>2</sup>/24h - the amount of water molecules that can pass through 1 square meter of fabric within 24 hours.

15.000 grams breathability equals that a jacket is able to pass 30 litres of water in 24 hours. In comparison, our human body perspires 1 liter per 24 hours.

#### WATER REPELLENCE, ISO 4920: 1981 and AATCC 35-2006

Spray test: testing of the durable water repellence before and after washing, by drizzling the fabric and measure how many drops that bounce up and if any attaches or wets out the fabric surface.



# CARING FOR YOUR HELLY TECH® GARMENTS

TAKING CARE OF YOUR HELLY TECH® GARMENTS ARE VITAL TO THE LIFE OF THE PRODUCT. WASHING THEM WILL REMOVE CONTAMINATING SUBSTANCES SUCH AS OILS, DIRT AND SALT FROM THE SURFACE AND RESTORE THE SURFACE TENSION OF THE FABRIC, ALLOWING THE MEMBRANE TO PERFORM AT ITS BEST FOR YEARS TO COME.

Unsure of when it's time to wash your garment, here are a few signs to look for:

If the water and/or rain droplets no longer bead off the surface of the jacket and start leaving a wet mark, the durable water repellency (DWR) treatment may be worn off or de-activated.

If the breathability does not seem to be on the same level as when you first purchased your Helly Tech® garment, the membrane could be contaminated.

If you need to re-apply a DWR, we recommend doing so after washing and before tumble drying.

## HOW TO WASH YOUR HELLY TECH® GARMENT:

1. Make sure you zip up all zippers to avoid any surface damage.
2. Wash your product with warm water as instructed on the care label located on the inside of your garment on the left-hand side in a commercial washing machine.
3. Do not use fabric softener or other detergents that have softening agents, as it will reduce the fabric surface tension and will have a negative effect on the fabric performance.
4. Helly Hansen advises to use a technical washing product and to follow the instructions given by that product. In cases where no technical washing products exist, and you only have the option of normal washing products, Helly Hansen advises to use a liquid washing product with no additives (without perfume, foam or softener).
5. A second rinse cycle with water is preferred to remove any detergents that might be left behind on the surface. It is important to remove excess detergent, as it might affect the performance of the fabric.
6. After washing, you can safely tumble dry your Helly Tech® garment in order to re-activate the DWR treatment. Please always follow the garment care label for drying instructions.

## HOW TO RE-APPLY YOUR DWR:

1. Take your garment out of the washing machine and hang it, to allow all excess water to drip off.
2. Make sure all pockets and zippers are closed
3. Read the DWR label from the manufacturer's instructions and spray the DWR across the front and back of the garment, making sure to cover areas of high wear.

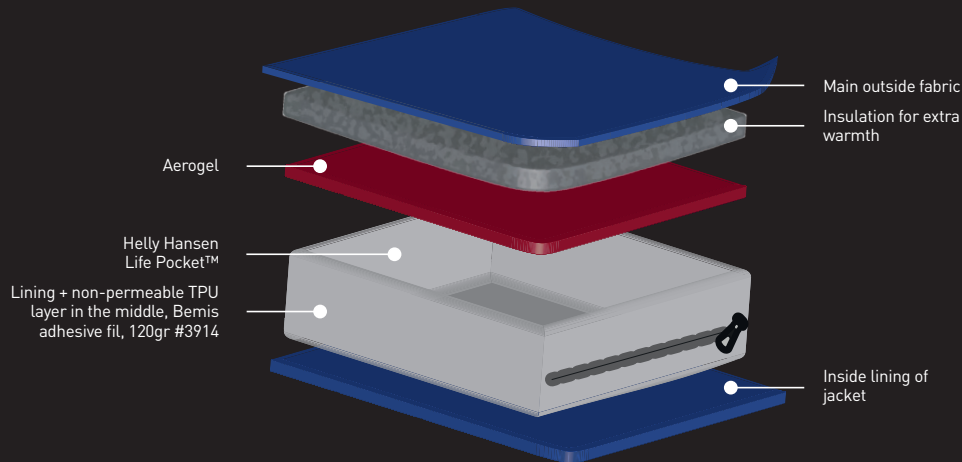
HELLY TECH®  
PERFORMANCE



# LIFE POCKET™



A POCKET ENGINEERED TO PRESERVE YOUR PERSONAL ELECTRONICS' BATTERY LIFE SPAN. SCIENTIFICALLY TESTED AND PROVEN BY ENGINEERS TO EXTEND THE BATTERY LIFE OF YOUR MOBILE PHONE OR ACTION CAMERA IN COLD ENVIRONMENTS. THROUGH THERMAL RESISTANT MATERIALS AND AN INNOVATIVE CONTRUCTION, THE LIFE POCKET™ STAYS 2 TIMES WARMER THAN A REGULAR POCKET.



## WASHING INSTRUCTIONS

WASH	
Do not wash	✗
Hand Wash	✓
Machine Washable	✓
Machine Washable, Synthetics cycle	✓
Machine Washable, Gentle/Wool wash	✓
100% Wool, Wool wash	✓
Mixed wool, Wool wash	✓
Wash Cold, 30°C/86°F	✓
Wash warm, 40°C/104°F	✓
Wash hot, 50°C/122°F	✓
Wash hot, 60 °C/140°F	✓
Wash hot, 70°C/158°F	✓
Wash hot, 95°C/203°F	✓
IRON	
Iron at any temperature and steam	✓
Iron, low temperature – max 110°C/230°F	✓
Iron, medium temperature – max 150°C/300°F	✓
Iron, high Temperature – max 200°C/390°F	✓
Do not Iron	✗
No steam	✗
DRY	
Dry Normal, low heat	✓
Dry Normal, Medium heat	✓
Dry Normal, High heat	✓
Dry Normal, No heat	✓
Do not tumble dry	✗
Tumble Dry, any heat	✓
Tumble Dry, Low permanent press	✓

DRY (CONT.)	
Tumble Dry, Medium Permanent press	✓
Tumble Dry, Low delicate	✓
Tumble Dry, any heat and any permanent press	✓
Tumble Dry, Delicate/Gentle	✓
Hang to dry	✓
Hang to dry, in the shade	✓
Dry Flat	✓
Dry flat, in the shade	✓
No direct sunlight	✓
Do not wring to dry	✗
DRY CLEAN	
Dry clean	✓
Any solvent	✓
Any solvent except tetrachloroethylene	✓
Petroleum solvent only	✓
Wet Cleaning	✓
Short cycle	✓
No steam finishing	✓
Reduced moisture	✓
Low heat	✓
Do not dry Clean	✗
Do not wet clean	✗
BLEACH	
Bleaching Allowed	✓
Chlorine bleaching allowed	✓
Do not bleach	✗
Do not use Chlorine Bleach	✗





## 3M™

Science. Applied to Life.™

3M™ is a pioneer in developing the science behind retroreflection and has been advancing the technology in new and groundbreaking ways for over 70 years. With more than 35 different products, including many high performance options, 3M™ Scotchlite™ Reflective Material offers one of the largest and most diverse portfolios in the industry. It is a trusted name in reflective material technology.



## YKK®

Little parts. Big difference

Little parts, Big difference. High quality zippers for all purposes. YKK® is a Japanese company founded in 1934. Today, their products are sold globally and YKK® is reputed as the industry leader for quality and innovative zippers and closures.



## AMANN

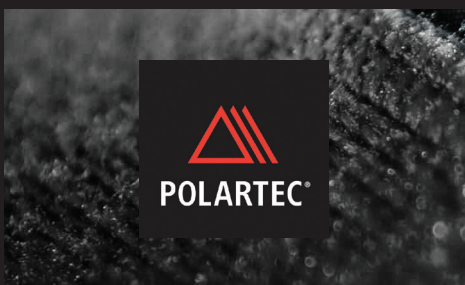
Since 1854, AMANN has been one of the leading international manufacturers of high-quality sewing threads, embroidery threads and Smart Yarns.



## CORDURA®

Durable. Versatile. Reliable

If It's Made With CORDURA® Fabric, It's Made To Last. CORDURA® fabrics are the perfect combination of durability, versatility and reliability. For more than 40 years, people who love the outdoors have relied on CORDURA® fabrics to be as rugged as they are.



## POLARTEC®

The Cornerstone of fleece insulation

We work extensively with Polartec®, a famous manufacturer of lightweight and warm fleece, which is known for performance, durability and aesthetics. Main benefits for using Polartec® are warmth without high additional weight, high breathability, packable and fast drying.



## PRIMALOFT®

The world's best down alternative

PrimaLoft® is a synthetic insulation technology, offering superior thermal properties with excellent water repellency. It is made up of ultra-fine fibers that form air pockets to trap heat inside. Additional feature of the ultra-fine fiber is super softness.




 The logo for COMFORTEMP® is displayed in a blue, lowercase sans-serif font. It is set against a background image of a white, fluffy, cloud-like texture.
 

**comfortemp®**

## COMFORTEMP®

### Thermal Insulation

Comfortemp® Thermal Insulation by Freudenberg is a high-performance and sustainable alternative to down. The ultra-soft & lightweight insulation is migration resistant, fast-drying and will not clump when washed. Additionally, the durable insulation offers optimal breathability, ensuring comfortability for extended wear.


 The logo for bluesign® is displayed in a white, lowercase sans-serif font. It is set against a solid dark blue rectangular background.
 

**bluesign®**

## BLUESIGN®

bluesign® provides a holistic solution for safe and environmentally friendly textile production, working at each step of the supply chain to ensure that products meet rigorous benchmarks with focus on People, Environment and Resources.


 The logo for OEKO-TEX® is displayed in a white, uppercase sans-serif font. It is set against a background image of a green, textured fabric surface.
 

**OEKO-TEX®**

## OEKO-TEX®

### STANDARD 100 by OEKO-TEX Certified®

The Standard 100 by OEKO-TEX® is a globally standardized, independent testing and certification system for textile raw material, intermediate & end products of all processing stages and accessories materials used. The standard aims at making it obvious to the consumer that the labelled textile products have undergone laboratory testing for a wide range of harmful substances, and that the content of those substances remains below the limit values established by the OEKO-TEX Certified® Association."



# US STANDARDS

---

RELATED TO HELLY HANSEN WORKWEAR

## WHY ARE STANDARDS IMPORTANT?

Standards play an integral role in the industries requiring protective clothing and equipment and provide the basis for guaranteeing a minimum level of protection to the worker. Standard test methods provide uniform testing procedures that ensure that manufacturers evaluate their products in the same way and make their claims accordingly. Standard specifications set minimum requirements for protective clothing and equipment in terms of design, performance and labels. Different practices exist for how manufacturers demonstrate conformance to these standards by independent testing and certification.

## HOW STANDARDS WORK

Standards provide minimum specifications for different requirements for the design, performance, documentation, and labeling of the “product” (the clothing or equipment item).

- Design requirements dictate how a product is to be made by specifying product configurations or other design features that must be provided. For example, arc and flame resistant rainwear cannot have hardware that penetrates from exterior to interior surfaces of the garment.
- Performance requirements are the most common parts of a standard. Performance requirements involve evaluating the product materials and components using specific test methods and setting either minimum or maximum values of the test property for the material or component. For example, material used in high visibility garments must show a certain level of brightness when measured using specific equipment and procedures. Documentation requirements address information that a manufacturer must provide with the product. These generally entail such information as the areas that must be addressed in user information or care and maintenance instructions provided by the manufacturer. Documentation requirements may also require reporting test results from a specific test to evaluate the product, but there is no specific minimum or maximum requirement. Labeling requirements indicate how the manufacturer must label the product and the minimum information that must be provided on the product label. In addition to identifying the manufacturer and the product, standards may require labels to provide some way of tracing the product and a statement indicating compliance with the standard. Each of these types of requirements is not found in all standards. When citing a particular standard, you must understand what that standard requires to ensure that you will get what you specify.





## WHICH ORGANIZATIONS DEVELOP STANDARDS?

Standards are developed by different organizations representing international, national or regional interests. In the United States, the principal standards development organization for industrial workwear is ASTM International. Other standards are developed by the American National Standards Institute (ANSI) or the National Fire Protection Association (NFPA). In Europe, the European Committee on Standardization (or CEN) develops protective clothing standards while the International Standards Organization (ISO) develops international protective clothing standards.

## HOW ARE STANDARDS DEVELOPED?

The majority of standard organizations operate by some form of consensus; that is, there are certain rules in place, which are intended to ensure that all represented interests are considered in the development of standards. Usually standards development entails multiple balloting and different approval levels with requirements of resolving all dissenting votes. Some standards organizations permit public participation in various ways. Once all concerns are satisfied through a consensus process, the standard is finalized and published. Standards are then generally revised periodically to account for new issues and improvements in protection requirements or test methods.

## HOW IS CONFORMANCE WITH A STANDARD DEMONSTRATED?

Most standards in North America do not require third party certification; however, the majority of testing is performed by independent, third party laboratories that are accredited to specific industry requirements for testing. Products that meet all the requirements of particular standard specification will have a label that indicates compliance with the respective standards. Purchasers can also ask for test reports and certificates from the manufacturer to show that a product has been tested to the respective standard identified on the product label.





# US STANDARDS

RELATED TO HELLY HANSEN WORKWEAR



## ANSI/ISEA 107-15

### HIGH VISIBILITY CLOTHING

ANSI 107 addresses clothing intended to provide visibility of the wearer under both daytime and nighttime conditions. The standard sets requirements for the minimum area and color performance of fluorescent background materials for daytime visibility. The standard also sets minimum requirements for reflective striping, which provides nighttime visibility when illuminated by vehicle headlights or other light sources. Three garment classes are established based on the respective areas of fluorescent background and reflective striping materials. Two levels of photometric performance are also based on the brightness and intensity of the reflected light of the reflective striping. The above icon is used to show compliance of Helly Hansen products with this standard. The garment class and photometric level are shown below the icon and standard citation in this catalog.



## ASTM F6413

### FLAME RESISTANCE TEST METHOD

ASTM D6413 is the preferred test method for demonstrating material flame resistance performance for flame-resistant clothing. The test measures the time a material will continue to burn (called "afterflame time") and the damaged length (called "char length") when a cut edge of the material is vertically exposed to a 1½ inch high methane flame for 12 seconds. The test method does not set specific acceptance criteria. However, the general industry practice and use of this test method in other flame-resistant clothing standards are to accept materials that show afterflame times of 2 seconds or less, and char lengths of 6 inches or less, without evidence of melting or dripping by the material under these test conditions. When flame resistance claims are made for Helly Hansen products, the icon shown above is used.



## ASTM 2733

### STANDARD SPECIFICATION FOR FLAME RESISTANT RAIN GEAR FOR PROTECTION AGAINST FLAME HAZARDS

This specification establishes applicable test methods, minimum physical and thermal performance criteria, a suggested sizing guide, and suggested purchasing information for rain gear for use by workers who are potentially exposed to industrial hydrocarbon fires or other petrochemical fire hazards.



## ASTM F2302

### FLAME AND HEAT RESISTANT CLOTHING

**\*WITHDRAWN STANDARD**

ASTM F2302 is designed to set minimum performance criteria for protective clothing where other specialized standards do not apply. The specification requires minimum flame resistance using the ASTM D6413 test method (described below) and heat resistance, as based on an International test method, ISO 17493. The specification requires that clothing materials show no more than a 2-second after flame and 6-inch char length when tested to ASTM D6413. For heat resistance, materials can not ignite, melt, drip, or separate, or shrink more than 10% when placed in an oven for 5 minutes at 500°F. Reusable garment materials are tested new and after 10 cycles of laundering. Helly Hansen product meeting this standard are identified with the icon shown above.

**WARNING:** Products that show acceptable afterflame and/or heat resistance per ASTM F2302 are not intended for direct flame contact or for prolonged high heat exposure. These products will not protect against all flame and heat exposures. Conduct a hazard and risk assessment to determine the suitability of this product for your application.



## NFPA 2112-2012

### STANDARD ON FLAME-RESISTANT GARMENTS FOR PROTECTION OF INDUSTRIAL PERSONNEL AGAINST FLASH FIRE

This standard specifies the minimum performance requirements and test methods for flame-resistant fabrics and components and the design and certification requirements for garments for use in areas at risk from flash fires. This standard shall provide minimum requirements for the design, construction, evaluation, and certification of flame resistant garments for use by industrial personnel, with the intent of not contributing to the burn injury of the wearer, providing a degree of protection to the wearer, and reducing the severity of burn injuries resulting from short-duration thermal exposures or accidental exposure to flash fires.





## NFPA 70 E

### ELECTRICAL WORK SAFETY REQUIREMENTS

NFPA 70E is related to the National Electrical Code and addresses electrical safety requirements for employee workplaces that encompass electrical conductors and equipment installed within or on buildings and adjacent areas and for the supply of electricity. Chapter 1 of the standard addresses safety-related work practices including gloves, sleeves footwear, head protection, face and eye protection, and protective apparel. Specific requirements are provided for wearing of clothing resistant to flash flame where possible exposure to electrical arc occurs. Clothing for body protection must meet ASTM F1506 (textile clothing) or ASTM F1891 (rainwear). Selection criteria are based on a hazard/risk category by task with ratings ranging from 1 to 4.

A separate table specifies different types of PPE for each hazard/risk category. For example, FR clothing consisting of a long-sleeved shirt pants, coverall, jacket, parka, or rainwear is required for hazard/risk categories 1 through 4. Arc flash suits are required for hazard/risk categories 3 and 4 in addition to arc-rated shirts and pants. NFPA 70E is primarily an end user standard, which does not specifically address clothing certification or labeling. Nevertheless, manufacturers can claim compliance with the standard according to one of the referenced hazard/risk categories by meeting the respective referenced clothing standard and then indicating the hazard/risk category consistent with the product's performance.



## ASTM F1891

### ELECTRICAL ARC PROTECTIVE RAINWEAR

ASTM F1891 is a standard specification that establishes test methods, minimum physical and thermal performance criteria, a suggested sizing guide, and labeling for rain wear used by workers who may be exposed to thermal hazards of momentary electric arcs and open flames. The specification includes requirements for material insulation during a simulated electrical arc exposure. In this test, the measured arc thermal protective value (ATPV) must be greater than 5 calories per square centimeter. Rainwear materials are also evaluated for flame resistance, strength, and water penetration resistance. Rainwear seams are also evaluated for water penetration resistance.



## ASTM F1506

### ELECTICAL ARC TEXTILE BASED PROTECTIVE CLOTHING

ASTM F1506 is a standard specification that establishes test methods, minimum physical and thermal performance criteria, and labeling for textile-based apparel used by workers who may be exposed to thermal hazards of momentary electric arcs and open flames. The garment material is tested for insulation during a simulated electrical arc exposure.

The test measures the energy required to cause a second degree burn, which is called an arc thermal protective value (ATPV). Garment materials are also tested for flame resistance, physical strength, colorfastness and laundry shrinkage. Helly Hansen products meeting this standard are shown with the above icon.

## STANDARDS & ELECTRICAL TERMINOLOGY

**Arc Rating** - is a value that describes a materials performance when exposed to an electrical arc discharge. It is expressed in cal/cm<sup>2</sup> and can be derived from either the ATPV [Arc Thermal Performance Value] or the Ebt [Breakopen Threshold Energy] whichever is lower.

**ATPV** - Arc Thermal Performance Value is defined as the incident energy that results in a 50% probability of the onset of a second degree burn.

**Ebt** - Breakopen Threshold Energy is defined as the incident energy on a material or material system that results in a 50% probability of breakopen.

**HAF** - Heat Attenuation Factor is the percentage of total energy that the fabric has prevented from reaching the panel sensors.

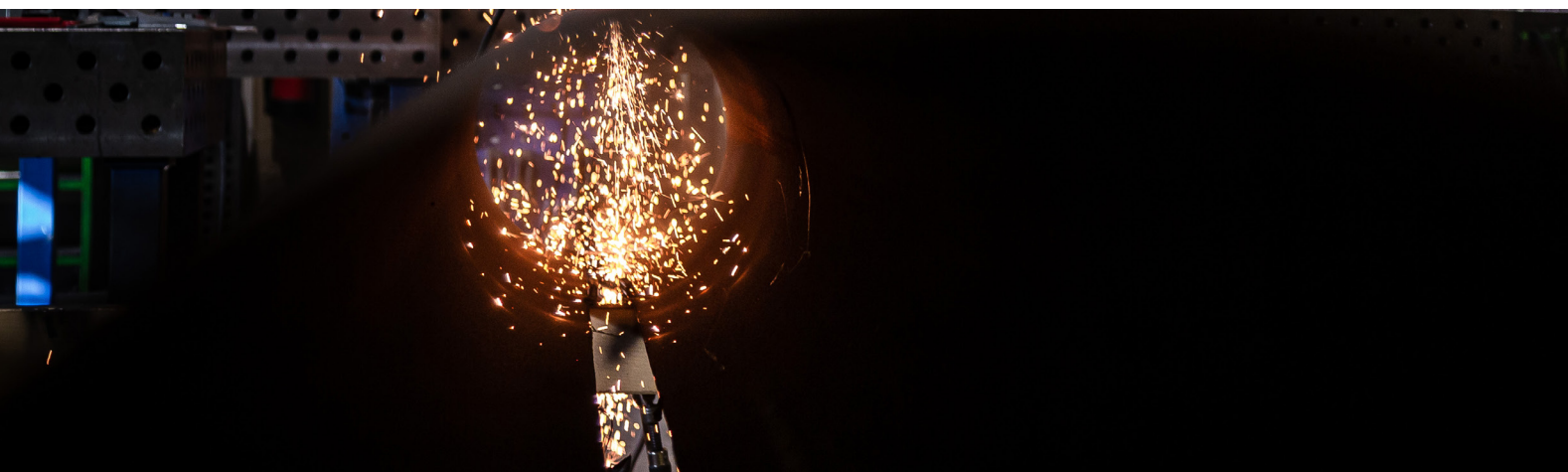


## ASTM F1671

### BLOOD-BORNE PATHOGEN TEST METHOD

ASTM F1671 is a test method that measures the passage of blood-borne pathogens through clothing material and seams. In this testing, specimens of workwear materials are individually placed in a test cell and exposed to liquid containing a non-harmful surrogate microorganism. This microorganism simulates Hepatitis B and C Viruses and the Human Immunodeficiency Virus (that causes AIDS). A sophisticated assay procedure is used that is able to detect a single penetrating virus, thus establishing the basis for clothing material viral penetration resistance. Test results are reported as "pass" if no virus is detected. Helly Hansen products that provide passing results for clothing material and seams are identified with the above icon.

**WARNING:** While Helly Hansen attests that the clothing material and seams pass ASTM F1671, conduct an assessment of workplace hazards to determine the suitability of this workwear for the intended application and if additional personal protective equipment is needed. Maintain workwear in accordance with the care instructions on the product label, read the user instructions prior to use to understand the limitations of the respective workwear prior to use. This workwear will not protect you under all conditions of exposure to blood-borne pathogens or other hazards.





# CHEMICAL COMPATIBILITY

The chart below shows chemical compatibility of waterproof fabrics coated with polyvinylchloride (PVC) and polyurethane (PU).

	PVC	PU		PVC	PU		PVC	PU
Acetaldehyde	●	●	Diethyl phthalate	●	●	Methylhydrazine	●	●
Acetic acid, 30%	●	●	Dioxane	●	●	Mineral oil	●	●
Acetic acid, glacial	●	●	Epichlorohydrin	●	●	Monoethanolamine	●	●
Acetone	●	●	Ethyl acetate	●	●	Morpholine	●	●
Acetonitrile	●	●	Ethyl alcohol	●	●	Naptha	●	●
Acrylic acid	●	●	Ethyl benzene	●	●	Nitric acid, 10%	●	●
Acrylonitrile	●	●	Ethyl cellosolve	●	●	Nitric acid, 30-70%	●	●
Ammonium hydroxide, <70%	●	●	Ethyl ether	●	●	Nitric acid, <70%	●	●
Ammonium hydroxide, conc.	●	●	Ethyl formate	●	●	Nitrobenzene	●	●
Ammonium sulfate	●	●	Ethylene dichloride	●	●	Nitropropane	●	●
Amyl acetate	●	●	Ethylene glycol	●	●	Octane	●	●
Aniline	●	●	Ethylene oxide	●	●	Octyl alcohol	●	●
Benzaldehyde	●	●	Ferric chloride	●	●	Oleic acid	●	●
Benzene	●	●	Formaldehyde	●	●	Oxalic acid	●	●
Benzyl alcohol	●	●	Formic acid	●	●	Palmitic acid	●	●
Benzyl chloride	●	●	Furfural	●	●	Pentane	●	●
Butane	●	●	Gasoline, unleaded	●	●	Perchloric acid, conc.	●	●
Butyl acetate	●	●	Gluteraldehyde	●	●	Perchloroethylene	●	●
Butyl cellosolve	●	●	Glycerine	●	●	Phenol	●	●
Butylamine	●	●	Heptane	●	●	Phosphoric acid, conc.	●	●
Butyraldehyde	●	●	Hexachlorocyclopentadiene	●	●	Picric acid	●	●
Butyric Acid	●	●	Hexane	●	●	Polychlorinated biphenyls	●	●
Calcium chloride	●	●	Hydrazine	●	●	Potassium cyanide	●	●
Calcium hypochloride	●	●	Hydrobromic acid	●	●	Potassium dichromate	●	●
Carbon disulfide	●	●	Hydrochloric acid, >70%	●	●	Potassium hydroxide	●	●
Carbon tetrachloride	●	●	Hydrochloric acid, 30-70%	●	●	Propane	●	●
Carbonic acid	●	●	Hydrochloric acid, 10-30%	●	●	b-Propiolactone	●	●
Chloroacetone	●	●	Hydrofluoric acid, 48%	●	●	Propyl acetate	●	●
Chlorobenzene	●	●	Hydrogen peroxide, 30%	●	●	Propyl alcohol	●	●
Chloroform	●	●	Hydroquinone	●	●	Propylene oxide	●	●
Chromic acid	●	●	Hylene	●	●	Sodium hydroxide, 30-70%	●	●
Citric acid	●	●	Isoamyl acetate	●	●	Sodium hydroxide, 70%	●	●
Coconut oil	●	●	Isobutyl alcohol	●	●	Sodium hypochlorite	●	●
Copper chloride	●	●	Isooctane	●	●	Sodium thiosulfate	●	●
Copper sulfate	●	●	Isopropanolamine	●	●	Stearic acid	●	●
Cottonseed oil	●	●	Isopropyl alcohol	●	●	Sulfuric acid, <30%	●	●
Cyclohexane	●	●	Isopropyl ether	●	●	Sulfuric acid, 30-70%	●	●
Cyclohexanol	●	●	Isopropylamine	●	●	Sulfuric acid, >70%	●	●
Cyclohexanone	●	●	Kerosene	●	●	Tannic acid	●	●
Detergent/soaps	●	●	Lactic acid	●	●	Tetrahydrofuran	●	●
Diacetone alcohol	●	●	Lauric acid	●	●	Tin chloride	●	●
Dibenzyl ether	●	●	Linseed oil	●	●	Toluene	●	●
Dibutyl phthalate	●	●	Maleic acid	●	●	Toluene diisocyanate	●	●
Diethanolamine	●	●	Malic acid	●	●	Trichloroethylene	●	●
Diethylamine	●	●	Methyl acetate	●	●	Tricresyl phosphate	●	●
Diisobutyl ketone	●	●	Methyl alcohol	●	●	Triethanolamine	●	●
Diisopropylamine	●	●	Methyl cellosolve	●	●	Turpentine	●	●
Dimethyl formamide	●	●	Methyl ethyl ketone	●	●	Urea	●	●
Dimethyl sulfoxide	●	●	Methyl isobutyl ketone	●	●	Vinyl acetate	●	●
Dimethylamine	●	●	Methylene chloride	●	●	Xylene	●	●

- Chemical not expected to degrade work wear material
- **CAUTION** - Chemical not expected to degrade material but is skin toxic or suspect/actual carcinogen; consider alternative suit design and material
- **WARNING** - CHEMICAL WILL DEGRADE WORK WEAR MATERIAL
- No data is available to rate material.

The data provided in this chemical-material compatibility guide are based on recommendations from the 3rd edition for the "Guidelines for the Selection of Chemical Protective Clothing," ACGIH, Cincinnati, 1987. Helly Hansen makes no warranties regarding the use of this information.

The end user must conduct a hazard assessment based on the conditions of use and determine the suitability of appropriate protective clothing on a case-by-case basis. Permeation or penetration testing against the chemical(s) of interest may be required to determine the barrier effectiveness of the material.







## HANGING TOOL POCKETS



The Helly Hansen hanging pockets allow you to carry all your necessary tools without the need for an additional toolbelt. Easily detachable or folded into the standard pants pocket when not in use, the hanging pockets provide additional space for small parts, featuring two compartments and a tool strap for added carrying capacity.

The hanging pockets are double lined and feature Cordura® reinforcements for added durability, making them perfect for even the toughest jobs.

## EXTENDABLE LEGS

Ensuring a perfect fit for the Helly Hansen Workwear pants is more than just for comfort, it's for safety. If pants are fitted correctly, you minimize the risk of getting caught on something while on site and maximize the life of the products with strategically placed reinforcement fabrics. Additionally, the product will feel more comfortable, as it will enable optimal movement.

Most of Helly Hansen Workwear trades pants can be extended by unpicking a seam at bottom hem

How to extend the bottom hem of your HH Workwear pants:



1 If your product has the extendable leg feature, you will find 3 threads on the bottom hem, 2 close together at the nearest bottom, 1 thread above the 2 that holds the additional material. These can either be in a contrast color or in a tonal color.



2 From the inside of the pant, rip the top thread carefully, as to not tear the garment



3 Remove the thread completely and pull the hem to reveal the additional material





## 2-WAY STRETCH VS 4-WAY STRETCH

---

Stretch can be defined by the possible direction of movement, such as 2-way or 4-way stretch. In a 2-way stretch, the fabric will only move in one direction, crosswise or lengthwise. A 4-way stretch fabric means it can move in both of these directions, allowing for unrestricted movement.

## 2-WAY MECHANICAL STRETCH

---

Similarly, stretch can be defined by how the fabric is created. Elastane stretch refers to fabrics where elastane thread is part of the structure and the amount of stretch depends on the percentage of elastin within the fabric. Alternatively, when yarn texture is combined in knitting techniques to create a small amount of stretch in an overall fabric, we refer to this as a mechanical stretch.



# PANT OVERVIEW

		CONSTRUCTION	WORK	SERVICE	
OXFORD	F1	79% Cotton 18% Polyester, 3% Elastan, 265 g/m <sup>2</sup>	79% Cotton, 18% Polyester, 3% Elastane, 265 g/m <sup>2</sup>	79% Cotton, 18% Polyester, 3% Elastane, 265 g/m <sup>2</sup>	
	F2	65% Polyester, 35% Cotton, 310 g/m <sup>2</sup>	65% Polyester, 35% Cotton, 310 g/m <sup>2</sup>	65% Polyester, 35% Cotton, 310 g/m <sup>2</sup>	
	R1	100% Polyamide, 195 g/m <sup>2</sup>	100% Polyamide, 195 g/m <sup>2</sup>	100% Polyamide, 195 g/m <sup>2</sup>	
MANCHESTER	F1	68% Cotton, 32% Polyester - 235 g/m <sup>2</sup>		68% Cotton, 32% Polyester - 235 g/m <sup>2</sup>	
W LUNA	F1	79% Cotton 18% Polyester, 3% Elastane - 265 g/m <sup>2</sup>		79% Cotton 18% Polyester, 3% Elastane - 265 g/m <sup>2</sup>	
	F2	65% Polyester, 35% Cotton - 310 g/m		65% Polyester, 35% Cotton - 310 g/m	
	R1	100% Polyamide, 195 g/m <sup>2</sup>		100% Polyamide, 195 g/m <sup>2</sup>	
W MANCHESTER	F1	68% Cotton, 32% Polyester - 235 g/m <sup>2</sup>		68% Cotton, 32% Polyester - 235 g/m <sup>2</sup>	

F1 = Main Fabric / F2 = Secondary Fabric / R1 = Reinforcement Fabric / F3 = Third Fabric



# PANT OVERVIEW



	CONSTRUCTION	WORK	SERVICE
OXFORD	 <p><b>OXFORD CONSTRUCTION PANT</b> 2 way stretch fabric in selected areas Nylon reinforcements Tonal logos 5 cm leg extension</p>	 <p><b>OXFORD WORK PANT</b> 2 way stretch fabric in selected areas Nylon reinforcements Tonal logos 5 cm leg extension</p>	 <p><b>OXFORD SERVICE PANT</b> 2 way stretch fabric in selected areas Tonal logos 5 cm leg extension</p>
MANCHESTER	 <p><b>MANCHESTER CONSTRUCTION PANT</b> 2 way mechanical stretch fabric Lightweight Reflective details 5 cm leg extension</p>		 <p><b>MANCHESTER SERVICE PANT</b> 2 way mechanical stretch fabric Lightweight Reflective details 5 cm leg extension</p>
W LUNA	 <p><b>W LUNA CONSTRUCTION PANT</b> 2 way stretch fabric in selected areas Nylon reinforcements Tonal logos 5 cm leg extension</p>		 <p><b>W LUNA SERVICE PANT</b> 2 way stretch fabric in selected areas Nylon reinforcements Tonal logos 5 cm leg extension</p>
W MANCHESTER	 <p><b>W MANCHESTER CONSTRUCTION PANT</b> 2 way mechanical stretch fabric Lightweight Reflective details 5 cm leg extension</p>		 <p><b>W MANCHESTER SERVICE PANT</b> 2 way mechanical stretch fabric Lightweight Reflective details 5 cm leg extension</p>













# KENSINGTON

bluesign  
approved



990

590

## 71345 KENSINGTON WINTER JACKET

\$260.00

HELLY TECH® PROFESSIONAL | lifaloft | LIFE POCKET | YKK | bluesign

### COLORS

590 NAVY, 990 BLACK

### SIZES

S-4XL

### FABRIC

Main fabric: 100% Polyester - 215 g/m²

Lining: 100% Polyester

Insulation: 70% Polypropylene, 30% Polyester - 100 g/m²

### ÖKO-TEX/BLUESIGN

OEKO-TEX® approved main fabric & bluesign® approved product

### WATERPROOF/BREATHABILITY

20.000/15.000



- Helly Tech® Professional
- Waterproof, windproof and breathable
- LIFALOFT™ insulation by PrimaLoft®
- Fully taped construction
- Detachable hood
- Vertical and horizontal hood adjustment
- Collar adjustment on center back
- Padded collar for extra comfort
- Brushed polyester inside collar
- No shoulder seams
- YKK® front zipper with chin protector
- Life Pocket™
- Hand pockets with YKK® zipper
- Hand pockets with brushed lining
- YKK® zipper for underarm ventilation
- Inside stash pockets
- Embellishment zipper
- Articulated sleeves for optimal mobility
- Adjustable cuffs
- Wrist Gaiters
- Adjustable hem with elastic drawcord inside hand pocket
- Extended back for improved comfort

bluesign  
approved



990

590

## 71080 KENSINGTON SHELL JACKET

\$195.00

HELLY TECH® PROFESSIONAL | YKK | bluesign

### COLORS

590 NAVY, 990 BLACK

### SIZES

S-4XL

### FABRIC

Main fabric: 100% Polyester - 215 g/m²

Lining: 100% Polyester

### ÖKO-TEX/BLUESIGN

OEKO-TEX® & bluesign® approved product

### WATERPROOF/BREATHABILITY

20.000/15.000



- Helly Tech® Professional
- Waterproof, windproof and breathable
- Fully taped construction
- Detachable hood
- Vertical and horizontal hood adjustment
- Collar adjustment on center back
- Brushed polyester inside collar
- No shoulder seams
- YKK® front zipper with chin protector
- Napoleon pocket, no need to open the jacket to access
- Hand pockets with YKK® zipper
- Hand pockets with brushed lining
- Inner chest pocket
- YKK® zipper for underarm ventilation
- Embellishment zipper
- Articulated sleeves for optimal mobility
- Adjustable cuffs
- Adjustable hem with elastic drawcord inside hand pocket
- Extended back for improved comfort
- Reflective details





990

## 73232 KENSINGTON LIFALOFT VEST

\$130.00

lifaLoft

YKK

blue  
sign®

### COLORS

590 NAVY, 990 BLACK

### SIZES

XS-4XL

### FABRIC

Main fabric: 100% Polyester - 75 g/m<sup>2</sup>  
 Secondary fabric: Face: 92% Polyester,  
 8% Elastane - 305 g/m<sup>2</sup>  
 Insulation: 70% Polypropylene, 30% Polyester - 80 g/m<sup>2</sup>

### ÖKO-TEX/BLUESIGN

OEKO-TEX® approved main fabric & bluesign® approved product

- LIFALOFT™ insulation by PrimaLoft®
- Softshell fabric with membrane and DWR
- No shoulder seams
- High collar for comfort
- Brushed fleece inside collar
- YKK® front zipper with chin protector
- Hand pockets with YKK® zipper
- Hand pockets with brushed lining
- Inside stash pockets
- Adjustable hem with elastic drawcord inside hand pocket
- Extended back for improved comfort



990

481

## 74230 KENSINGTON HOODED SOFTSHELL JACKET

\$130.00

YKK

blue  
sign®

### COLORS

481 CAMO, 990 BLACK

### SIZES

XS-4XL

### FABRIC

Main fabric: Face: 92% Polyester, 8% Elastane - 305 g/m<sup>2</sup>

### ÖKO-TEX/BLUESIGN

OEKO-TEX® approved main fabric & bluesign® approved product

### BREATHABILITY

5.000/5.000

- Softshell fabric with membrane and DWR
- No shoulder seams
- Adjustable hood with elastic drawcord
- YKK® front zipper with chin protector
- Chest pocket with YKK® zipper
- Hand pockets with YKK® zipper
- Hand pockets with brushed lining
- Inside stash pockets
- Articulated sleeves for optimal mobility
- Adjustable cuffs
- Adjustable hem with elastic drawcord inside hand pocket
- Extended back for improved comfort



990

## 74231 KENSINGTON SOFTSHELL JACKET

\$120.00

YKK

blue  
sign®

### COLORS

990 BLACK

### SIZES

XS-4XL

### FABRIC

Main fabric: Face: 92% Polyester, 8% Elastane - 305 g/m<sup>2</sup>

### ÖKO-TEX/BLUESIGN

OEKO-TEX® approved main fabric & bluesign® approved product

### BREATHABILITY

5.000/5.000

- Softshell fabric with membrane and DWR
- No shoulder seams
- High collar for comfort
- Brushed fleece inside collar
- YKK® front zipper with chin protector
- Chest pocket with YKK® zipper
- Hand pockets with YKK® zipper
- Hand pockets with brushed lining
- Inside stash pockets
- Articulated sleeves for optimal mobility
- Adjustable cuffs
- Adjustable hem with elastic drawcord inside hand pocket
- Extended back for improved comfort



990

930

590

## 79243 KENSINGTON ZIP HOODIE

\$115.00

YKK

### COLORS

590 NAVY, 930 GREY MELANGE, 931 GREY MELANGE CAMO,  
 990 BLACK

### SIZES

S-4XL

### FABRIC

Main fabric: 95% Cotton, 5% Elastane, brushed backside - 330 g/m<sup>2</sup>. Main fabric Grey Mélange: 66% Cotton, 31% Polyester, 3% Elastane, brushed backside - 330 g/m<sup>2</sup>

- Double layer fabric in hood
- Rib-knit around hood opening for improved comfort
- YKK® zipper at front
- Hand pockets with YKK® zipper
- Raised HH Workwear logo
- Rib-knit at bottom sleeve and hem





## 79245 KENSINGTON SWEATSHIRT

\$80.00



990 930 590

### COLORS

590 NAVY, 930 GREY MELANGE, 990 BLACK

### SIZES

S-4XL

### FABRIC

Main fabric: 95% Cotton, 5% Elastane, brushed backside - 330 g/m<sup>2</sup>. Main fabric Grey Mélange: 66% Cotton, 31% Polyester, 3% Elastane, brushed backside - 330 g/m<sup>2</sup>

- Rib-knit around collar for improved comfort
- Raised HH Workwear logo
- Rib-knit at bottom sleeve and hem



## 79248 KENSINGTON TECH POLO

\$68.00



990 930 900 590

### COLORS

590 NAVY, 900 WHITE, 930 MID GREY, 990 BLACK

### SIZES

S-4XL

### FABRIC

Main fabric: 100% Polyamide - 185 g/m<sup>2</sup>

### ÖKO-TEX/BLUESIGN

OEKO-TEX® approved main fabric

- Buttoned front placket
- Slit split
- Extra button included



## 79242 KENSINGTON LONGSLEEVE

\$42.00



900 481 990 930 590

### COLORS

481 CAMO, 590 NAVY, 900 WHITE, 930 GREY MELANGE, 990 BLACK

### SIZES

S-4XL

### FABRIC

Main fabric: 92% Cotton, 8% Elastane - 220 g/m<sup>2</sup>

- Rib-knit at center front for improved comfort
- Raised HH Workwear logo



## 79246 KENSINGTON T-SHIRT

\$35.00



481 930 900 590

### COLORS

481 CAMO, 590 NAVY, 900 WHITE, 930 GREY MELANGE, 990 BLACK

### SIZES

S-4XL

### FABRIC

Main fabric: 92% Cotton, 8% Elastane - 220 g/m<sup>2</sup>. Main fabric Grey Mélange: 47% Cotton, 45% Polyester, 8% Elastane - 220 g/m<sup>2</sup>

- Raised HH Workwear logo





**79812 KENSINGTON WOOL BEANIE****\$42.00**

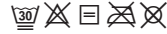
**COLORS**  
590 NAVY, 970 DARK GREY, 990 BLACK

**SIZES**  
STD

**FABRIC**  
Main fabric: 80% Lambswool 20% Nylon  
Lining: 100% Polyester

- Knitted wool beanie
- Fleece headband for extra warmth
- HH Workwear logo

990 970 590

**79811 KENSINGTON BEANIE****\$21.00**

**COLORS**  
290 DARK ORANGE, 480 ARMY GREEN, 590 NAVY, 930 GREY MELANGE, 990 BLACK

**SIZES**  
STD

**FABRIC**  
Main fabric: 100% Acrylic

- Knitted polyester beanie
- HH Workwear logo

480 290 990 930 590

**79802 KENSINGTON CAP****\$30.00**

481

990



991

**COLORS**  
481 CAMO, 990 BLACK, 991 BLACK

**SIZES**  
STD

**FABRIC**  
100% Cotton

- Full crown construction
- Snap back
- One size fits most

**79806 KENSINGTON FLAT BRIM****\$30.00**

970

**COLORS**  
970 DARK GREY

**SIZES**  
STD

**FABRIC**  
100% Cotton

- Flat brim
- Full crown construction
- One size fits most



# OXFORD

blue  
sign®

## 73290 OXFORD WINTER JACKET

\$180.00



990

590



### COLORS

590 NAVY, 990 BLACK

### SIZES

S-4XL

### FABRIC

Main fabric: 100% Polyester - 255 g/m<sup>2</sup>  
 Secondary Main fabric: 65% Polyester, 35% Cotton - 310 g/m<sup>2</sup>  
 Insulation: 80% Recycled Polyester, 20% Polyester - 100 g/m<sup>2</sup>  
 in body & 80 g/m<sup>2</sup> in sleeves

### ÖKO-TEX/BLUESIGN

OEKO-TEX® approved main fabric & bluesign® approved product

- Helly Tech® Performance fabric
- Critically taped
- No shoulder seams
- Detachable hood
- Adjustable hood with drawcord and fastener
- Brushed polyester inside collar
- YKK® front zipper with chin protector
- Full inner front placket
- Inner chest pocket
- Hand pockets with YKK® zipper
- Embellishment zipper
- Articulated sleeves for optimal mobility
- Adjustable cuffs
- Adjustable hem with drawcord inside hand pocket
- Extended back for improved comfort
- Reflective details

blue  
sign®

## 71290 OXFORD SHELL JACKET

\$165.00



590

990



### COLORS

590 NAVY, 990 BLACK

### SIZES

S-4XL

### FABRIC

Main fabric: 100% Polyester - 255 g/m<sup>2</sup>

### ÖKO-TEX/BLUESIGN

OEKO-TEX® approved main fabric & bluesign® approved product

### WATERPROOF/BREATHABILITY

10.000/10.000

- Helly Tech® Performance
- Waterproof, Windproof, Breathable
- Fully taped construction
- No shoulder seams
- Detachable hood
- Adjustable hood with drawcord and fastener
- Brushed polyester inside collar
- YKK® front zipper with chin protector
- Inner chest pocket
- Hand pockets with YKK® zipper
- Embellishment zipper
- Articulated sleeves for optimal mobility
- Adjustable cuffs
- Adjustable hem with drawcord inside hand pocket
- Extended back for improved comfort
- Reflective details

blue  
sign®

## 77041 OXFORD LINED JACKET

NEW

\$150.00



999



### COLORS

999 BLACK/EBONY

### SIZES

S-4XL

### FABRIC

Main fabric: 79% Cotton, 18% Polyester, 3% Elastane - 265 g/m<sup>2</sup>  
 Secondary main fabric: 65% Polyester, 35% Cotton - 310 g/m<sup>2</sup>  
 Insulation 1: 100% Polyester - 350 g/m<sup>2</sup> in body  
 100% Recycled Polyester - 80 g/m<sup>2</sup> in sleeves  
 Lining: 100% Polyester

### ÖKO-TEX/BLUESIGN

OEKO-TEX® & bluesign® approved main fabric

- No shoulder seams
- Pile fleece lining
- YKK® front zipper with chin protector
- Full inner front placket
- Chest pockets with YKK® zipper
- Hand pockets with YKK® zipper
- Inner chest pocket
- Embellishment zipper
- Articulated sleeves for optimal mobility
- Adjustable cuffs
- Extended back for improved comfort
- Reflective details





999

**77040 OXFORD LINED VEST****NEW****\$130.00****COLORS**

999 BLACK/EBONY

**SIZES**

S-4XL

**FABRIC**

Main fabric: 79% Cotton, 18% Polyester, 3% Elastane - 265 g/m<sup>2</sup>  
 Secondary main fabric: 65% Polyester, 35% Cotton - 310 g/m<sup>2</sup>  
 Lining: 100% Polyester - 350 g/m<sup>2</sup> in body

**ÖKO-TEX/BLUESIGN**

OEKO-TEX® &amp; bluesign® approved main fabric

- No shoulder seams
- Pile fleece lining
- YKK® front zipper with chin protector
- Full inner front placket
- Chest pockets with YKK® zipper
- Hand pockets with YKK® zipper
- Inner chest pocket
- Embellishment zipper
- Extended back for improved comfort
- Reflective details



999

990

595

590

**74290 OXFORD HOODED SOFTSHELL JACKET****\$130.00****COLORS**

590 NAVY, 595 NAVY/STONE BLUE, 990 BLACK, 999 BLACK/EBONY

**SIZES**

S-4XL

**FABRIC**

Main fabric: 100% Polyamider - 385 g/m<sup>2</sup>  
 Secondary main fabric: 100% Polyester - 325 g/m<sup>2</sup>

**ÖKO-TEX/BLUESIGN**

OEKO-TEX® approved main fabric

**BREATHABILITY**

5000/5000

- Softshell fabrics with membrane and DWR
- No shoulder seams
- Detachable hood
- Adjustable hood with drawcord and fastener
- Brushed polyester inside collar
- YKK® front zipper with chin protector
- Hand pockets with YKK® zipper
- Articulated sleeves for optimal mobility
- Adjustable cuffs
- Adjustable hem with drawcord inside hand pocket
- Extended back for improved comfort
- Reflective details



990

970

590

**72026 OXFORD FLEECE JACKET****\$90.00****COLORS**

590 NAVY, 970 DARKGREY, 990 BLACK

**SIZES**

S-4XL

**FABRIC**Main fabric: 100% Recycled Polyester - 251 g/m<sup>2</sup>**ÖKO-TEX/BLUESIGN**

OEKO-TEX® approved main fabric &amp; bluesign® approved product

- Polartec® Recycled fleece
- Double layer fabric in collar
- YKK® front zipper with chin protector
- Chest pocket with YKK® zipper
- Hand pockets with YKK® zipper
- Hand pockets with brushed lining
- Flatlock seams for extra comfort



990

970

590

**72097 OXFORD LIGHT FLEECE JACKET****\$60.00****COLORS**

590 NAVY, 970 DARKGREY, 990 BLACK

**SIZES**

XS-4XL

**FABRIC**Main fabric: 100% Recycled Polyester - 159 g/m<sup>2</sup>**ÖKO-TEX/BLUESIGN**

OEKO-TEX® approved main fabric &amp; bluesign® approved product

- Polartec® Recycled fleece
- Double layer fabric in collar
- YKK® front zipper with chin protector
- Hand pockets with YKK® zipper
- Hand pockets with brushed lining
- Flatlock seams for extra comfort







990

## 72452 OXFORD LIGHT FLEECE PANT

\$50.00



**COLORS**  
990 BLACK

**SIZES**  
XS-4XL

**FABRIC**  
Main fabric: 100% Recycled Polyester - 159 g/m<sup>2</sup>

**ÖKO-TEX/BLUESIGN**  
OEKO-TEX® approved main fabric & bluesign® approved product

- Polartec® Recycled fleece
- Elastic in waist for perfect fit and freedom of movement
- Gusset at crotch
- Flatlock seams for extra comfort



990

## 77489 OXFORD LINED CONSTRUCTION PANT

NEW

\$130.00



**COLORS**  
990 BLACK

**SIZES**  
30/30-38/30, 30/32-44/32, 32/34-36/34

**FABRIC**  
Main fabric: 79% Cotton, 18% Polyester, 3% Elastane - 265 g/m<sup>2</sup>  
Secondary main fabric: 65% Polyester, 35% Cotton - 310 g/m<sup>2</sup>  
Reinforcement: 100% Polyamide - 195 g/m<sup>2</sup>  
Insulation: 100% Recycled Polyester - 159 g/m<sup>2</sup>

**ÖKO-TEX/BLUESIGN**  
OEKO-TEX® & bluesign® approved main fabric

- 2-way stretch fabric
- Hanging pockets with double lined bottom and nylon webbing for durability
- Broad center back belt loop for extra stability and strength
- Gusset in crotch for freedom of movement
- Plastic covered metal buttons
- Thigh pocket with fastener closure
- ID card loop
- Ruler pocket
- Reinforcement fabric at knee and bottom hem
- Articulated knees for optimal mobility
- Knee Pad pockets accessible from the inside
- Knee Pad position can be adjusted by 5 cm for optimal mobility
- Possibility to increase leg length by 5cm



990

590

## 77467 OXFORD CONSTRUCTION PANT

\$110.00



**COLORS**  
590 NAVY, 990 BLACK

**SIZES**  
30/30-38/30, 30/32-44/32, 32/34-36/34

**FABRIC**  
Main fabric: 79% Cotton 18% Polyester, 3% Elastane - 265 g/m<sup>2</sup>  
Secondary fabric: 65% Polyester, 35% Cotton - 310 g/m<sup>2</sup>  
Reinforcement: 100% Polyamide - 195 g/m<sup>2</sup>

**ÖKO-TEX/BLUESIGN**  
OEKO-TEX® approved main fabric

- 2-way stretch fabric
- Hanging pockets with double lined bottom and nylon webbing for durability
- Broad center back belt loop for extra stability and strength
- Gusset in crotch for freedom of movement
- Plastic covered metal buttons
- Thigh pocket with fastener closure
- ID card loop
- Ruler pocket
- Reinforcement fabric at knee and bottom hem
- Articulated knees for optimal mobility
- Knee Pad pockets accessible from the inside
- Knee Pad position can be adjusted by 5 cm for optimal mobility
- Possibility to increase leg length by 5cm



990

590

## 77468 OXFORD WORK PANT

\$95.00



**COLORS**  
590 NAVY, 990 BLACK

**SIZES**  
30/30-38/30, 30/32-44/32, 32/34-36/34

**FABRIC**  
Main fabric: 79% Cotton 18% Polyester, 3% Elastane - 265 g/m<sup>2</sup>  
Secondary fabric: 65% Polyester, 35% Cotton - 310 g/m<sup>2</sup>  
Reinforcement: 100% Polyamide - 195 g/m<sup>2</sup>

**ÖKO-TEX/BLUESIGN**  
OEKO-TEX® approved main fabric

- 2-way stretch fabric
- Broad center back belt loop for extra stability and strength
- Gusset in crotch for freedom of movement
- Plastic covered metal buttons
- Thigh pocket with fastener closure
- ID card loop
- Ruler pocket
- Reinforcement fabric at knee and bottom hem
- Articulated knees for optimal mobility
- Knee Pad pockets accessible from the inside
- Knee Pad position can be adjusted by 5 cm for optimal mobility
- Possibility to increase leg length by 5cm
- Tonal logos







990 590

## 77466 OXFORD SERVICE PANT

\$80.00

YKK



### COLORS

590 NAVY, 990 BLACK

### SIZES

30/30-38/30, 30/32-44/32, 32/34-36/34

### FABRIC

Main fabric: 79% Cotton 18% Polyester,  
3% Elastane - 265 g/m<sup>2</sup>  
Secondary fabric: 65% Polyester, 35% Cotton - 310 g/m<sup>2</sup>  
Reinforcement: 100% Polyamide - 195 g/m<sup>2</sup>

### ÖKO-TEX/BLUESIGN

OEKO-TEX® approved main fabric

- 2-way stretch fabric
- Broad center back belt loop for extra stability and strength
- Gusset in crotch for freedom of movement
- Plastic covered metal buttons
- Thigh pocket with fastener closure
- ID card loop
- Reinforcement fabric on bottom hem
- Possibility to increase leg length by 5cm
- Tonal logos



481

990 590

## 79584 OXFORD BACKPACK 20L

\$110.00

YKK

### COLORS

481 CAMO, 590 NAVY, 990 BLACK

### SIZES

STD

### FABRIC

Main fabric: 100% Polyester - 497 g/m<sup>2</sup>

- Laptop compartment
- Inside stash pockets
- Multiple pockets
- External pocket with key-hook
- ID card pocket
- Carry-on compatible with most airlines
- Grab handle on top
- 20 L
- Length 12.6"
- Width 6.3"
- Depth 17.7"
- 1.76 lbs

## 79821 OXFORD TRAPPER CAP

NEW

\$50.00

AVAILABLE IN OCTOBER

### COLORS

990 BLACK

### SIZES

S/M, L/XL

### FABRIC

Main fabric: 100% Cotton, 100% Polyester

- 5 panel cap
- Weather resistant main fabric
- Soft pile located on button down ear flaps for added warmth



990







# LUNA



bluesign®

## 71304 W LUNA WINTER JACKET

\$260.00



990

590

HELLY TECH® LIFE POCKET



### COLORS

590 NAVY, 990 BLACK

### SIZES

XS-2XL

### FABRIC

Main fabric: 100% Polyester - 215 g/m²

Lining: 100% Polyamide

Insulation: 80% Recycled Polyester, 20% Polyester - 133g/m² in body, 80 g/m² in sleeves and hood.

### ÖKO-TEX/BLUESIGN

OEKO-TEX® approved main fabric & bluesign® approved product

### WATERPROOF/BREATHABILITY

20.000/15.000



- Helly Tech® Professional
- Waterproof, Windproof, Breathable
- Fully taped construction
- PrimaLoft® Insulation
- No shoulder seams
- Detachable hood
- Vertical and horizontal hood adjustment
- Collar adjustment on center back
- Padded collar for extra comfort
- Brushed polyester inside collar
- YKK® front zipper with chin protector
- Life Pocket™
- Hand pockets with YKK® zipper and brushed lining
- YKK® zipper for underarm ventilation
- Inside stash pockets
- Embellishment zipper
- Articulated sleeves for optimal mobility
- Adjustable cuffs
- Wrist Gaiters
- Adjustable hem with elastic drawcord inside hand pocket
- Extended back for improved comfort
- Reflective details

bluesign®

## 71240 W LUNA SHELL JACKET

\$195.00



990

590

HELLY TECH®



### COLORS

590 NAVY, 990 BLACK

### SIZES

XS-2XL

### FABRIC

Main fabric: 100% Polyester - 215 g/m²

Lining: 100% Polyester

### ÖKO-TEX/BLUESIGN

OEKO-TEX® approved main fabric & bluesign® approved product

### WATERPROOF/BREATHABILITY

20.000/15.000



- Helly Tech® Professional
- Waterproof, Windproof, Breathable
- Fully taped construction
- No shoulder seams
- Detachable hood
- Vertical and horizontal hood adjustment
- Collar adjustment on center back
- Brushed polyester inside collar
- YKK® front zipper with chin protector
- Hand pockets with YKK® zipper
- Hand pockets with brushed lining
- YKK® zipper for underarm ventilation
- Embellishment zipper
- Articulated sleeves for optimal mobility
- Adjustable cuffs
- Adjustable hem with elastic drawcord inside hand pocket
- Extended back for improved comfort
- Reflective details

bluesign®

## 74240 W LUNA SOFTSHELL JACKET

\$120.00



990

590



### COLORS

590 NAVY, 990 BLACK

### SIZES

XS-2XL

### FABRIC

Main fabric: Face: 92% Polyester, 8% Elastane - 305 g/m²

### ÖKO-TEX/BLUESIGN

OEKO-TEX® approved main fabric & bluesign® approved product

### BREATHABILITY

5.000/5.000



- Softshell fabric with membrane and DWR
- No shoulder seams
- High collar for comfort
- Brushed fleece inside collar
- YKK® front zipper with chin protector
- Hand pockets with YKK® zipper
- Hand pockets with brushed lining
- Inside stash pockets
- Articulated sleeves for optimal mobility
- Adjustable cuffs
- Adjustable hem with elastic drawcord inside hand pocket
- Extended back for improved comfort





990

590

**72400 W LUNA FLEECE JACKET****\$90.00****COLORS**

590 NAVY, 990 BLACK

**SIZES**

XS-2XL

**FABRIC**Main fabric: 100% Recycled Polyester - 251 g/m<sup>2</sup>**ÖKO-TEX/BLUESIGN**

OEKO-TEX® &amp; bluesign® approved product

- Polartec® Recycled fleece
- Double layer fabric in collar
- High collar for comfort
- No shoulder seams
- YKK® front zipper with chin protector
- Hand pockets with YKK® zipper
- Hand pockets with brushed lining
- Inside stash pockets
- Articulated sleeves for optimal mobility
- No side seams
- Adjustable hem with elastic drawcord inside hand pocket
- Extended back for improved comfort
- Flatlock seams for extra comfort



990

480

590

**70286 W LUNA RAIN JACKET****\$100.00****COLORS**

480 ARMY GREEN, 590 NAVY, 990 BLACK

**SIZES**

XS-2XL

**FABRIC**Main fabric: 100% PU on 100% Polyester knit - 240 g/m<sup>2</sup>

- Waterproof Stretch Fabric
- Packable hood in collar
- Adjustable hood with elastic drawcord
- Double main fabric front flap
- Napoleon pocket with YKK® zipper and hole for head phones
- Hand pockets
- Neoprene cuffs
- Adjustable hem with elastic drawcord
- Extended back for improved comfort



990

481

590

**70486 W LUNA RAIN PANT****\$60.00****COLORS**

480 ARMY GREEN, 590 NAVY, 990 BLACK

**SIZES**

XS-2XL

**FABRIC**Main fabric: 100% PU on 100% Polyester knit - 240 g/m<sup>2</sup>

- Waterproof Stretch Fabric
- Adjustable waist
- Adjustable bottom leg with snap buttons



990

**77481 W LUNA CONSTRUCTION PANT****\$110.00****COLORS**

990 BLACK

**SIZES**

4/30-18/32

**FABRIC**

Main fabric: 79% Cotton 18% Polyester, 3% Elastane - 265 g/m<sup>2</sup>  
 Secondary fabric: 65% Polyester, 35% Cotton - 310 g/m<sup>2</sup>  
 Reinforcement: 100% Polyamide - 195 g/m<sup>2</sup>

**ÖKO-TEX/BLUESIGN**

OEKO-TEX® approved main fabric

- 2-way mechanical stretch fabric
- Hanging pockets with double lined bottom and nylon webbing for durability
- Broad center back belt loop for extra stability and strength
- Gusset in crotch for freedom of movement
- Plastic covered metal buttons
- Thigh pocket with fastener closure
- ID card loop
- Ruler pocket
- Reinforcement fabric at knee and bottom hem
- Articulated knees for optimal mobility
- Knee Pad pockets accessible from the inside
- Knee Pad position can be adjusted by 5cm for optimal mobility
- Possibility to increase leg length by 5cm
- Tonal logos







990

## 77480 W LUNA SERVICE PANT

\$80.00

YKK



**COLORS**  
990 BLACK

**SIZES**  
4/30-18/32

**FABRIC**  
Main fabric: 79% Cotton 18% Polyester, 3% Elastane - 265 g/m<sup>2</sup>  
Secondary fabric: 65% Polyester, 35% Cotton - 310 g/m<sup>2</sup>  
Reinforcement: 100% Polyamide - 195 g/m<sup>2</sup>

**ÖKO-TEX/BLUESIGN**  
OEKO-TEX® approved main fabric

- 2-way mechanical stretch fabric
- Broad center back belt loop for extra stability and strength
- Gusset in crotch for freedom of movement
- Plastic covered metal buttons
- Thigh pocket with fastener closure
- ID card loop
- Reinforcement fabric at bottom hem
- Possibility to increase leg length by 5cm
- Tonal logos





# MANCHESTER

bluesign  
product


999

71351

MANCHESTER WINTER JACKET

\$125.00

HELLY TECH®  
PROTECTION


YKK

## COLORS

999 BLACK

## SIZES

XS-4XL

## FABRIC

Main fabric: 100% Polyester - 150 g/m<sup>2</sup>  
Lining: 100% Polyamide  
Insulation: 80% Recycled Polyester, 20% Polyester - 100 g/m<sup>2</sup> in body & 80 g/m<sup>2</sup> in sleeves and hood

## ÖKO-TEX/BLUESIGN

bluesign® approved main fabric



- Helly Tech® Protection
- Waterproof, Windproof, Breathable
- Fully taped construction
- Primaloft® Black Eco Insulation
- Adjustable hood with drawcord and fastener
- YKK® front zipper with chin protector
- Hand pockets with YKK® zipper
- Inner chest pocket
- Embellishment zipper
- Adjustable cuffs
- Adjustable hem with elastic drawcord
- Reflective details

bluesign  
product


990

71452

MANCHESTER WINTER PANT

\$85.00

HELLY TECH®  
PROTECTION


YKK

## COLORS

990 BLACK

## SIZES

XS-4XL

## FABRIC

Main fabric: 100% Polyester - 150 g/m<sup>2</sup>  
Lining: 100% Polyamide  
Insulation: 80% Recycled Polyester, 20% Polyester - 60 g/m<sup>2</sup>

## ÖKO-TEX/BLUESIGN

bluesign® approved main fabric



- Helly Tech® Protection
- Waterproof, Windproof, Breathable
- Fully taped construction
- Primaloft® Black Eco Insulation
- Adjustable waist with drawcord
- Knee high boot zipper with storm flap
- Reflective details

bluesign  
product


990

590

71043

MANCHESTER SHELL JACKET

\$130.00

HELLY TECH®  
PROTECTION


YKK

## COLORS

590 NAVY, 990 BLACK

## SIZES

XS-3XL

## FABRIC

Main fabric: 100% Polyester - 150 g/m<sup>2</sup>

## ÖKO-TEX/BLUESIGN

bluesign® approved main fabric



Zip in compatible with 72045 Manchester Zip In Fleece Jacket  
& 72095 Manchester Zip In Fleece Vest

- Helly Tech® Protection
- Waterproof, Windproof, Breathable
- Fully taped construction
- Detachable hood
- Adjustable hood with drawcord and fastener
- Brushed polyester inside collar
- No shoulder seams
- YKK® front zipper with chin protector
- Chest pocket with YKK® zipper
- Hand pockets with YKK® zipper
- Hand pockets with brushed lining
- Embellishment zipper
- Adjustable cuffs
- Adjustable hem with elastic drawcord



bluesign  
product



990

## 71445 MANCHESTER SHELL PANT

\$80.00

HELLY TECH®  
PROTECTION

**COLORS**  
990 BLACK

**SIZES**  
XS-4XL

**FABRIC**  
Main fabric: 100% Polyester - 150 g/m²

**ÖKO-TEX/BLUESIGN**  
bluesign® approved main fabric

- Helly Tech® Protection
- Waterproof, Windproof, Breathable
- Fully taped construction
- Two pockets at front with zippers



bluesign  
product



990

530

## 70127 MANCHESTER RAIN JACKET

\$95.00

HELLY TECH®  
PROTECTION

YKK®

**COLORS**  
530 RACER BLUE, 990 BLACK

**SIZES**  
XS-4XL

**FABRIC**  
Main fabric: 100% Polyester - 108 g/m²  
Lining: 100% Polyester

**ÖKO-TEX/BLUESIGN**  
bluesign® approved main fabric

- Helly Tech® Protection
- Waterproof, Windproof, Breathable
- Fully taped construction
- Two hand pockets
- Opening in back for ventilation



bluesign  
product



990

## 70427 MANCHESTER RAIN PANT

\$55.00

HELLY TECH®  
PROTECTION

**COLORS**  
990 BLACK

**SIZES**  
XS-4XL

**FABRIC**  
Main fabric: 100% Polyester - 108 g/m²  
Lining: 100% Polyester

**ÖKO-TEX/BLUESIGN**  
bluesign® approved main fabric

- Helly Tech® Protection
- Waterproof, Windproof, Breathable
- Fully taped construction
- Elastic at waist
- Adjustable bottom leg with fastener



bluesign  
product



990

950

919

590

229

## 74085 MANCHESTER 2.0 SOFTSHELL JACKET

NEW

\$100.00

AVAILABLE IN OCTOBER

YKK®

bluesign

**COLORS**  
229 ALERT RED/EBONY, 590 NAVY, 919 GREY FOG/EBONY,  
950 EBONY, 990 BLACK

**SIZES**  
XS-4XL

**FABRIC**  
Main fabric: 94% Polyester, 6% Elastane - 290 g/m²

**ÖKO-TEX/BLUESIGN**  
OEKO-TEX® approved main fabric & bluesign® approved  
product

- Softshell fabric with membrane and DWR
- No shoulder seams
- Brushed fleece inside collar
- YKK® front zipper with chin protector
- Hand pockets with YKK® zipper
- Hand pockets with brushed lining
- Articulated sleeves for optimal mobility
- Adjustable cuffs
- Adjustable hem with elastic drawcord inside hand pocket
- Extended back for improved comfort
- Reflective details





bluesign  
partner


990 950 910 590 220

## 74086 MANCHESTER 2.0 ZIP IN SOFTSHELL VEST **NEW** \$85.00

AVAILABLE IN OCTOBER

YKK

bluesign

### COLORS

220 ALERT RED, 590 NAVY, 910 GREY FOG, 950 EBONY, 990 BLACK

### SIZES

XS-4XL

### FABRIC

Main fabric: 94% Polyester, 6% Elastane - 290 g/m²

### ÖKO-TEX/BLUESIGN

OEKO-TEX® approved main fabric &amp; bluesign® approved product

- Softshell fabric with membrane and DWR
- No shoulder seams
- Brushed fleece inside collar
- YKK® front zipper with chin protector
- Hand pockets with YKK® zipper
- Hand pockets with brushed lining
- Adjustable hem with elastic drawcord inside hand pocket
- Extended back for improved comfort
- Reflective details



## 72065 MANCHESTER ZIP IN FLEECE JACKET

\$80.00

Zip in compatible with 71043 &amp; 71045

YKK



990

### COLORS

990 BLACK

### SIZES

XS-4XL

### FABRIC

Main fabric: 100% Polyester, 320 g/m²

### ÖKO-TEX/BLUESIGN

OEKO-TEX® approved main fabric

- Brushed polyester inside collar
- Hand pockets with YKK® zipper
- Zip in compatible with 71043 Manchester Shell Jacket and 71045 Manchester Shell Coat



## 72095 MANCHESTER 2.0 ZIP IN FLEECE VEST **NEW** \$60.00

AVAILABLE IN OCTOBER

Zip in compatible with 71043 &amp; 71045

YKK

bluesign



590

990

### COLORS

590 NAVY, 990 BLACK

### SIZES

XS-4XL

### FABRIC

Main fabric: 100% Polyester - 320 g/m²

### ÖKO-TEX/BLUESIGN

OEKO-TEX® approved main fabric

- YKK® front zipper with chin protector
- Hand pockets with YKK® zipper
- Extended back for improved comfort



## 77522 MANCHESTER CONSTRUCTION PANT

\$70.00

YKK

bluesign



990

590

### COLORS

590 NAVY, 990 BLACK

### SIZES

30/30-38/30, 30/32-44/32, 32/34-36/34

### FABRIC

Main fabric: 68% Cotton, 32% Polyester - 235 g/m²

### ÖKO-TEX/BLUESIGN

OEKO-TEX® approved main fabric

- 2-way mechanical stretch fabric
- Hanging pockets with double lined bottom for durability
- Gusset in crotch for freedom of movement
- Plastic covered metal buttons
- Thigh pocket with fastener closure
- ID card loop
- Ruler pocket
- Articulated knees for optimal mobility
- Knee Pad pockets accessible from the inside
- Knee Pad position can be adjusted by 5 cm for optimal mobility
- Possibility to increase leg length by 5cm
- Reflective details







481

## 77526 MANCHESTER SERVICE PANT

NEW

\$55.00

YKK



**COLORS**  
481 CAMO

**SIZES**  
30/30-38/30, 30/32-44/32, 32/34-36/34

**FABRIC**  
Main fabric: 68% Cotton, 32% Polyester - 235 g/m<sup>2</sup>

**ÖKO-TEX/BLUESIGN**  
OEKO-TEX® approved main fabric

- 2-way mechanical stretch fabric
- Gusset in crotch for freedom of movement
- Plastic covered metal buttons
- Thigh pocket with fastener closure
- Opening for ruler
- ID card loop
- Possibility to increase leg length by 5cm
- Reflective details



990

590

## 77526 MANCHESTER SERVICE PANT

\$50.00

YKK



**COLORS**  
590 NAVY, 990 BLACK

**SIZES**  
30/30-38/30, 30/32-44/32, 32/34-36/34

**FABRIC**  
Main fabric: 68% Cotton, 32% Polyester - 235 g/m<sup>2</sup>

**ÖKO-TEX/BLUESIGN**  
OEKO-TEX® approved main fabric

- 2-way mechanical stretch fabric
- Gusset in crotch for freedom of movement
- Plastic covered metal buttons
- Thigh pocket with fastener closure
- Opening for ruler
- ID card loop
- Possibility to increase leg length by 5cm
- Reflective details



481

## 77544 MANCHESTER SERVICE SHORTS

NEW

\$45.00

YKK



**COLORS**  
481 CAMO

**SIZES**  
W28-48

**FABRIC**  
Main fabric: 68% Cotton, 32% Polyester - 235 g/m<sup>2</sup>

**ÖKO-TEX/BLUESIGN**  
OEKO-TEX® approved main fabric

- 2-way mechanical stretch fabric
- Gusset in crotch for freedom of movement
- Plastic covered metal buttons
- Thigh pocket with fastener closure
- ID card loop
- Reflective details



990

590

## 77544 MANCHESTER SERVICE SHORTS

NEW

\$40.00

YKK



**COLORS**  
590 NAVY, 990 BLACK

**SIZES**  
W28-48

**FABRIC**  
Main fabric: 68% Cotton, 32% Polyester - 235 g/m<sup>2</sup>

**ÖKO-TEX/BLUESIGN**  
OEKO-TEX® approved main fabric

- 2-way mechanical stretch fabric
- Gusset in crotch for freedom of movement
- Plastic covered metal buttons
- Thigh pocket with fastener closure
- ID card loop
- Reflective details







990

970

590

## 79216 MANCHESTER ZIP HOODIE

\$60.00

YKK

### COLORS

590 NAVY, 970 DARK GREY, 990 BLACK

### SIZES

XS-4XL

### FABRIC

Main fabric: 100% Cotton, 280 g/m²

### ÖKO-TEX/BLUESIGN

bluesign® approved product

- Adjustable hood with drawcord
- YKK® front zipper with chin protector
- Two hand pockets
- Side seams
- Elastic cuffs and hem



990

970

590

## 79214 MANCHESTER HOODIE

\$55.00

### COLORS

590 NAVY, 900 WHITE, 970 DARK GREY, 990 BLACK

### SIZES

XS-4XL

### FABRIC

Main fabric: 100% Cotton, 280 g/m²

- Adjustable hood with drawcord
- Front hand warmer pocket
- Side seams
- Elastic rib at cuffs and bottom hem



990

970

590

## 79212 MANCHESTER ZIP SWEATSHIRT

\$50.00

YKK

### COLORS

590 NAVY, 970 DARK GREY, 990 BLACK

### SIZES

XS-4XL

### FABRIC

Main fabric: 100% Cotton, 280 g/m²

### ÖKO-TEX/BLUESIGN

bluesign® approved product

- Double layer fabric in collar
- YKK® front zipper with chin protector
- Two hand pockets
- Side seams
- Elastic cuffs and hem



990

970

910

590

## 79208 MANCHESTER SWEATSHIRT

\$40.00

### COLORS

590 NAVY, 910 GREY FOG, 970 DARK GREY, 990 BLACK

### SIZES

XS-4XL

### FABRIC

Main fabric: 100% Cotton, 280 g/m²

- Ribbed collar
- Side seams
- Elastic rib at cuffs and bottom hem







## 79167 MANCHESTER POLO

\$32.00



990 970 900 590

**COLORS**  
590 NAVY, 900 WHITE, 970 DARK GREY, 990 BLACK

**SIZES**  
XS-4XL

**FABRIC**  
Main fabric: 100% Cotton, 190 g/m<sup>2</sup>

- Ribbed collar
- Buttoned front placket
- Extra button included
- Side seams



## 79169 MANCHESTER LONGSLEEVE

\$22.00



990 970 900 590

**COLORS**  
590 NAVY, 900 WHITE, 970 DARK GREY, 990 BLACK

**SIZES**  
XS-4XL

**FABRIC**  
Main fabric: 100% Cotton, 150 g/m<sup>2</sup>

- Ribbed collar
- Side seams



## 79161 MANCHESTER T-SHIRT

\$18.00



990 970 900 590

**COLORS**  
590 NAVY, 900 WHITE, 970 DARK GREY, 990 BLACK

**SIZES**  
XS-4XL

**FABRIC**  
Main fabric: 100% Cotton, 150 g/m<sup>2</sup>

- Ribbed collar
- Side seams



## 79883 MANCHESTER BEANIE

\$20.00



993

972

679

595

**COLORS**  
595 NAVY/LIGHT BLUE, 679 PINK/BLACK, 972 DARK GREY/ORANGE, 993 BLACK/YELLOW

**SIZES**  
STD

**FABRIC**  
Main fabric: 100% Acrylic

- Knitted beanie
- Reversible design
- Water repellent fiber





# WOMEN'S MANCHESTER

HELLY TECH® PROTECTION

## 74044 W MANCHESTER SHELL JACKET

\$130.00



990

HELLY TECH® PROTECTION

YKK®

**COLORS**  
990 BLACK

**SIZES**  
S-2XL

**FABRIC**  
Main fabric: 100% Polyester - 150 g/m²  
Lining: 100% Polyester

**ÖKO-TEX/BLUESIGN**  
OEKO-TEX® approved main fabric & bluesign® approved product

- Helly Tech® Protection
- Waterproof, Windproof, Breathable
- Fully taped construction
- Detachable hood
- Adjustable hood with drawcord and fastener
- Brushed polyester inside collar
- No shoulder seams
- YKK® front zipper with chin protector
- Chest pocket with YKK® zipper
- Hand pockets with YKK® zipper
- Hand pockets with brushed lining
- Embellishment zipper
- Adjustable cuffs
- Adjustable hem with elastic drawcord
- ID card loop



990

590

## 77528 W MANCHESTER CONSTRUCTION PANT

\$70.00

FORMERLY W LUNA LIGHT CONSTRUCTION PANT

YKK®

AMANN

**COLORS**  
590 NAVY, 990 BLACK

**SIZES**  
26/30-38/32

**FABRIC**  
Main fabric: 68% Cotton, 32% Polyester - 235 g/m²

**ÖKO-TEX/BLUESIGN**  
OEKO-TEX® approved main fabric

- 2-way mechanical stretch fabric
- Hanging pockets with double lined bottom
- Gusset in crotch for freedom of movement
- Plastic covered metal buttons
- Thigh pocket with fastener closure
- ID card loop
- Ruler pocket
- Articulated knees for optimal mobility
- Knee Pad pockets accessible from the inside
- Knee Pad position can be adjusted by 5cm for optimal mobility
- Possibility to increase leg length by 5cm
- Reflective details



990

590

## 77532 W MANCHESTER SERVICE PANT

\$50.00

FORMERLY W LUNA LIGHT SERVICE PANT

YKK®

AMANN

**COLORS**  
590 NAVY, 990 BLACK

**SIZES**  
26/30-38/32

**FABRIC**  
Main fabric: 68% Cotton, 32% Polyester - 235 g/m²

**ÖKO-TEX/BLUESIGN**  
OEKO-TEX® approved main fabric

- 2-way mechanical stretch fabric
- Gusset in crotch for freedom of movement
- Plastic covered metal buttons
- Thigh pocket with fastener closure
- ID card loop
- Possibility to increase leg length by 5cm
- Reflective details







990 970 590

## 79217 W MANCHESTER ZIP HOODIE

\$60.00

YKK

### COLORS

590 NAVY, 970 DARK GREY, 990 BLACK

### SIZES

XS-2XL

### FABRIC

Main fabric: 100% Cotton - 280 g/m<sup>2</sup>

### ÖKO-TEX/BLUESIGN

bluesign® approved product

- Adjustable hood with drawcord
- YKK® front zipper with chin protector
- Two hand pockets
- Side seams
- Elastic cuffs and hem



990 970 590

## 79215 W MANCHESTER HOODIE

\$55.00

### COLORS

590 NAVY, 970 DARK GREY, 990 BLACK

### SIZES

XS-2XL

### FABRIC

Main fabric: 100% Cotton - 280 g/m<sup>2</sup>

### ÖKO-TEX/BLUESIGN

bluesign® approved product

- Adjustable hood with drawcord
- Front hand warmer pocket
- Side seams
- Elastic rib at cuffs and bottom hem



990 590

## 79213 W MANCHESTER ZIP SWEATSHIRT

\$50.00

YKK

### COLORS

590 NAVY, 990 BLACK

### SIZES

XS-2XL

### FABRIC

Main fabric: 100% Cotton - 280 g/m<sup>2</sup>

### ÖKO-TEX/BLUESIGN

bluesign® approved product

- Double layer fabric in collar
- YKK® front zipper with chin protector
- Two hand pockets
- Side seams
- Elastic cuffs and hem



990 970 590

## 79209 W MANCHESTER SWEATSHIRT

\$40.00

### COLORS

590 NAVY, 970 DARK GREY, 990 BLACK

### SIZES

XS-2XL

### FABRIC

Main fabric: 100% Cotton - 280 g/m<sup>2</sup>

### ÖKO-TEX/BLUESIGN

bluesign® approved product

- Ribbed collar
- Side seams
- Elastic rib at cuffs and bottom hem



## 79168 W MANCHESTER POLO

\$32.00



990 970 900 590

**COLORS**  
590 NAVY, 900 WHITE, 970 DARK GREY, 990 BLACK

**SIZES**  
XS-2XL

**FABRIC**  
Main fabric: 100% Cotton - 190 g/m<sup>2</sup>

- Ribbed collar
- Buttoned front placket
- Extra button included
- Side seams



## 79159 W MANCHESTER LONGSLEEVE

\$22.00



990 970 **900** 590

**COLORS**  
590 NAVY, 900 WHITE, 970 DARK GREY, 990 BLACK

**SIZES**  
XS-2XL

**FABRIC**  
Main fabric: 100% Cotton - 150 g/m<sup>2</sup>

- Ribbed collar
- Side seams



## 79163 W MANCHESTER T-SHIRT

\$18.00



990 970 900 590

**COLORS**  
590 NAVY, 900 WHITE, 970 DARK GREY, 990 BLACK

**SIZES**  
XS-2XL

**FABRIC**  
Main fabric: 100% Cotton - 150 g/m<sup>2</sup>

- Ribbed collar
- Side seams











# GRAPHIC



290

930

780



990

991

590

## 79264 HHWW GRAPHIC HOODIE

NEW

\$60.00

### COLORS

290 DARK ORANGE MELANGE, 590 NAVY MELANGE, 780 SAND MELANGE, 930 LIGHT GREY MELANGE, 990 BLACK, 991 BLACK MELANGE

### SIZES

XS-4XL

### FABRIC

Main fabric: 80% Cotton, 20% Polyester - 300 g/m²

### ÖKO-TEX/BLUESIGN

OEKO-TEX® approved main fabric

- Adjustable hood with drawcord
- Front hand warmer pocket
- Rib-knit at bottom sleeve and hem



## 79263 HHWW GRAPHIC SWEATSHIRT

NEW

\$55.00



990

930

590

460

### COLORS

460 GREEN, 590 NAVY MELANGE, 930 LIGHT GREY MELANGE, 990 BLACK

### SIZES

XS-4XL

### FABRIC

Main fabric: 80% Cotton, 20% Polyester - 300 g/m²

### ÖKO-TEX/BLUESIGN

OEKO-TEX® approved main fabric

- Rib-knit around collar for improved comfort
- Rib-knit at bottom sleeve and hem



## 79262 HHWW GRAPHIC LONGSLEEVE

NEW

\$33.00



900

558

460



990

991

### COLORS

460 GREEN, 558 STONE BLUE, 900 WHITE, 990 BLACK, 991 BLACK

### SIZES

XS-4XL

### FABRIC

Main fabric: 92% Organic Cotton, 8% Elastane - 220 g/m²

### ÖKO-TEX/BLUESIGN

OEKO-TEX® approved main fabric

- Rib-knit at center front for improved comfort







558



460



290



992



990



900

## 79261 HHWW GRAPHIC T-SHIRT

NEW

\$30.00

### COLORS

290 DARK ORANGE, 460 GREEN, 558 STONE BLUE, 900 WHITE, 990 BLACK, 992 BLACK

### SIZES

XS-4XL

### FABRIC

Main fabric: 92% Organic Cotton, 8% Elastane - 220 g/m<sup>2</sup>

### ÖKO-TEX/BLUESIGN

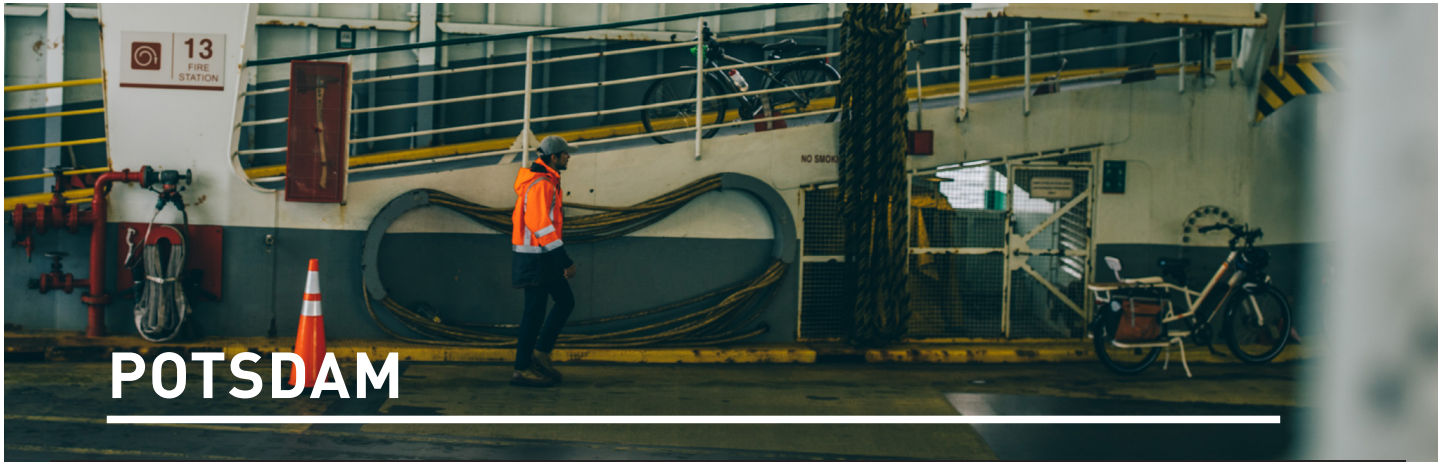
OEKO-TEX® approved main fabric





HI VIS





blue  
honey

## 71389 POTSDAM JACKET ANSI

\$160.00

HELLY TECH®  
PROTECTION | YKK

### COLORS

269 HI VIS ORANGE/CHARCOAL, 369 HI VIS YELLOW/CHARCOAL

### SIZES

2XS-6XL

### FABRIC

Outer Shell: 100% Oxford Polyester – 200 g/m<sup>2</sup>  
Contrast Color: 100% Oxford Nylon – 140 g/m<sup>2</sup>  
Lining: 100% Nylon

### CERTIFICATIONS

ANSI/SEA 107-2015 Type R Class 3



269

369

- Helly Tech® Protection
- Waterproof, Windproof, Breathable
- Fully taped construction
- Reflective band at shoulders, sleeves and waist
- Detachable hood
- Hood designed to be used with a helmet
- Brushed polyester inside collar
- Storm flap
- Two-way zipper and velcro closure
- Two pockets at front with zippers and flaps
- Two chest pockets with zippers and flaps
- Inner chest pocket with zipper
- Mobile phone and pen pocket at right chest
- Zip ventilation under arms
- Draw cord adjustment at hem
- Draw cord adjustment at waist
- Elastic cuffs with velcro adjustment
- Zipper for entry inside garment for logo applications
- Click-on loops for accessories under pocket flaps

blue  
honey

## 78074 POTSDAM INSULATOR JACKET

\$140.00

HELLY TECH®  
PROTECTION | YKK

### COLORS

260 HI VIS ORANGE, 360 HI VIS YELLOW

### SIZES

2XS-6XL

### FABRIC

Main Outershell: 100% Polyester – 200 g/m<sup>2</sup>  
Insulation: 100% Polyester – 120 g/m<sup>2</sup>

### CERTIFICATIONS

ANSI/SEA 107-2015 Type R Class 3



360

260

- Helly Tech® Protection
- Waterproof, Windproof, Breathable
- Fully taped construction
- Brushed Polyester inside collar
- Reflective bands at waist, shoulders and cuffs
- Inner pocket with Velcro shoulders
- Mobile Pocket with Velcro closure
- Two front pockets with zippers and snaps
- Drawcord adjustment at hem
- Tail drop
- Storm flap w/ zippers and Velcro closure
- Click-on loops for accessories under pocket flaps
- Optional as zip in jacket with 71389

blue  
honey

## 71489 POTSDAM PANT ANSI

\$135.00

HELLY TECH®  
PROTECTION | YKK

### COLORS

269 HI VIS ORANGE/CHARCOAL, 369 HI VIS YELLOW/CHARCOAL

### SIZES

2XS-6XL

### FABRIC

Main Outershell: 100% Oxford Polyester – 200 g/m<sup>2</sup>  
Contrast Color: 100% Oxford Nylon – 140 g/m<sup>2</sup>  
Lining: 100% Nylon

### CERTIFICATIONS

ANSI/ISEA 107-2015 Class E



269

369

- Helly Tech® Protection
- Waterproof, Windproof, Breathable
- Fully taped construction
- Reflective band at legs
- Fly with zip
- Two pockets at front with zippers and flaps
- Two thigh pockets with flaps
- Ruler pocket with button for attaching knives
- Back pocket with flap
- Broad belt tunnel at back for extra strength and stability
- Belt loops with Click-on function for additional accessories
- Elastic at waist
- Knee pad pockets inside
- Detachable back piece with elastic suspenders
- Velcro adjustment at hem
- Boot zippers with storm flap and velcro closure



260 Back



369

260

## 71288 ALTA WINTER JACKET CSA

**NEW**
**\$125.00**
**HELLY TECH®**  
PERFORMANCE

**YKK**

**COLORS**

260 HI VIS ORANGE, 369 HI VIS YELLOW/CHARCOAL

**SIZES**

XS-4XL

**FABRIC**

Main fabric: 100% Polyester, 200 g  
Secondary fabric: 100% Polyamide 145 g.  
Insulation: 100% Polyamide - 120 g. in body & 100 g. in sleeves.

**CERTIFICATION**

CSA-Z96  
CSA-Z95-15 CLASS 2, LEVEL 2  
CSA-Z95-15 CLASS 3, LEVEL 2 w/ 71480

**WATERPROOF/BREATHABILITY**

10.000/10.000

- Helly Tech® Performance
- Waterproof, Windproof, Breathable
- Fully taped construction
- Detachable hood
- Adjustable hood with drawcord and fastener
- Napoleon pocket with YKK® zipper, no need to open the jacket to access
- Hand pockets with YKK® zipper
- Adjustable cuffs
- Adjustable hem with drawcord
- Embellishment zipper
- ID card loop

**HELLY TECH®**  
PERFORMANCE


369

260

## 71480 ALTA WINTER BIB CSA

**\$110.00**
**HELLY TECH®**  
PERFORMANCE

**YKK**

**COLORS**

260 HI VIS ORANGE, 369 HI VIS YELLOW/CHARCOAL

**SIZES**

S-5XL

**FABRIC**

Main fabric: 100% Polyester - 215 g/m²  
Secondary Main fabric: 100% Polyamide - 235 g/m²  
Lining: 100% Polyamide  
Insulation: 80% Recycled Polyester, 20% Polyester - 100 g/m²

**CERTIFICATION**

CSA-Z96  
CSA-Z95-15 CLASS 3, LEVEL 2 w/ 71288

**WATERPROOF/BREATHABILITY**

10.000/10.000

- Helly Tech® Performance
- Waterproof, Windproof, Breathable
- Fully Taped Construction
- 80 g/m² Primaloft Eco Black Insulation
- Elasticated Suspenders with Clips
- Chest Pocket with Velcro Closure
- Buttons on Side for Easy On/Off
- Fly with Zipper

**HELLY TECH®**  
PERFORMANCE


369

## 70445 ALTA WINTER PANT

**\$95.00**
**HELLY TECH®**  
PERFORMANCE

**YKK**

**COLORS**

369 HI VIS YELLOW/CHARCOAL

**SIZES**

S-4XL

**FABRIC**

Main fabric: 100% Polyester, 200 g  
Secondary fabric: 100% Polyamide 145 g.  
Insulation: 100% Polyamide, 100 g.

**CERTIFICATION**

ANSI/ISEA 107:2015 Class E

**WATERPROOF/BREATHABILITY**

10.000/10.000

- Helly Tech® Performance
- Windproof, waterproof and breathable
- Fully Taped Construction
- Draw cord adjustment at waist
- Belt loops
- Knee high boot zipper with storm flap and fastener closure
- ID card loop
- Compatible with 79550 HH WW SUSPENDERS 2.0



369 Back



369 Back



260

369

## 71088 ALTA SHELL JACKET CSA

NEW

\$105.00

HELLY TECH®  
PERFORMANCE

YKK

### COLORS

260 HI VIS ORANGE, 369 HI VIS YELLOW/CHARCOAL

### SIZES

S-4XL

### FABRIC

Main fabric: 100% Polyester, 200 g  
Secondary fabric: 100% Polyamide 145 g.  
Lining: 100% Polyamide

### CERTIFICATION

CSA-Z96

### WATERPROOF/BREATHABILITY

10.000/10.000

- Helly Tech® Performance
- Waterproof, Windproof, Breathable
- Fully taped construction
- YKK center front zip with stormflap
- Back placket with chin guard in brushed polyester
- Brushed polyester inside collar
- Packable hood with draw cord adjustment at front and velcro adjustment at back
- Hood designed to be used with a helmet
- Two hand pockets with flap and velcro closure
- Napoleon pocket, no need to open the jacket to access
- Velcro adjustment at cuffs
- Loop for ID-card
- Extended back for improved comfort
- Zipper for entry inside garment for logo applications

260



260



369

## 71443 ALTA SHELL BIB

\$100.00

HELLY TECH®  
PERFORMANCE

### COLORS

260 HI VIS ORANGE, 369 HI VIS YELLOW/CHARCOAL

### SIZES

XS-4XL

### FABRIC

Main fabric: 100% Polyester, 200 g  
Secondary fabric: 100% Polyamide 145 g.

### CERTIFICATION

ANSI/ISEA 107-15 Class E

### WATERPROOF/BREATHABILITY

10.000/10.000

- Helly Tech® Performance
- Waterproof, Windproof, Breathable
- Fully taped construction
- Front Fly
- Boot hem adjustment snaps
- Front Pocket with Velcro closure

369



369

## 71442 ALTA SHELL PANT

\$85.00

HELLY TECH®  
PERFORMANCE

### COLORS

369 HI VIS YELLOW/CHARCOAL

### SIZES

XS-4XL

### FABRIC

Main fabric: 100% Polyester, 200 g  
Secondary fabric: 100% Polyamide 145 g.

### CERTIFICATION

ANSI/ISEA 107-15 Class E

### WATERPROOF/BREATHABILITY

10.000/10.000

- Helly Tech® Performance
- Waterproof, Windproof, Breathable
- Fully taped construction
- Draw cord adjustment at waist
- Belt loops
- Knee high boot zipper with storm flap and fastener closure
- ID card loop
- Compatible with 79550 HH WW SUSPENDERS 2.0



260 Back



360

260

## 70266 ALTA RAIN JACKET

\$100.00

3M

YKK

### COLORS

260 HI VIS ORANGE, 360 HI VIS YELLOW

### SIZES

XS-4XL

### FABRIC

Main fabric: 100% Polyester - 170 g/m², PU coating

### CERTIFICATION

ANSI/ISEA 107-2015 Type R Class 3

- 3M reflex
- Waterproof fabric and construction
- Stretch Fabric
- Packable hood with draw cord adjustment at front
- Drawcord Adjustable Waist
- 2 Front Pockets
- Adjustable Cuffs with Snap Closure
- Storm Flap



260

360

**70570 ALTA RAIN BIB****\$100.00****3M****YKK****COLORS**

260 HI VIS ORANGE, 360 HI VIS YELLOW

**SIZES**

XS-4XL

**FABRIC**Main fabric: 100% Polyester - 170 g/m<sup>2</sup>, PU coating**CERTIFICATION**

ANSI/ISEA 107-2015 Class E

- 3M reflex
- Waterproof fabric and construction
- Double layered fabric at knees
- Inner chest pocket with zipper closure
- Ankle Zippers
- Adjustable Suspenders



260 Back



360

260

**70261 ALTA RAIN JACKET CSA****\$105.00****3M****YKK****COLORS**

260 HI VIS ORANGE, 360 HI VIS YELLOW

**SIZES**

S-4XL

**FABRIC**Main fabric: 100% Polyester - 170 g/m<sup>2</sup>, PU coating**CERTIFICATION**

CSA Z96 Class 2, Level 2

- 3M reflex
- Waterproof fabric and construction
- Stretch Fabric
- Packable hood with draw cord adjustment at front
- Adjustable Waist
- 2 Front Pockets
- Adjustable Cuffs with Snap Closure
- Storm Flap



369 Back



950

260

369

**74074 ALTA SOFTSHELL JACKET CSA****\$135.00****3M****YKK****COLORS**

260 HI VIS ORANGE, 369 HI VIS YELLOW, 950 EBONY

**SIZES**

XS-4XL

**FABRIC**

Shell: 100% Polyester - Lining: 100% Polyester

**CERTIFICATION**

Hi Vis Orange/Hi Vis Yellow: CSA Z96-2015 CLASS 2, LEVEL 2, QC MOT  
 Ebony: CSA Z96-2015 CLASS 1, LEVEL 2, QC MOT

- Softshell fabric with membrane and DWR
- Brushed polyester inside collar
- YKK® front zipper with chin protector
- Chest pocket with YKK® zipper
- ID card loop
- Hand pockets with YKK® zipper
- Hand pockets with brushed lining
- Articulated sleeves for optimum mobility
- Adjustable cuffs
- Adjustable hem with elastic drawcord inside hand pocket

**77474 ALTA CONSTRUCTION PANT CSA****\$120.00****YKK****COLORS**

260 HI VIS ORANGE, 369 HI VIS YELLOW, 950 EBONY

**SIZES**

30/30-38/30, 30/32-40/32

**FABRIC**

Shell: 85% Polyester, 15% Cotton

Shell 3: 100% Polyamide

**CERTIFICATION**

Must be worn with CSA Class 2, Level 2 upper garments to meet CSA Z96-15 Class 3, Level 2 standards



950

260

369

- Hanging pockets with double lined bottom and nylon webbing for durability
- Hand pockets
- Hammer holder loops on both sides
- Broad center back belt loop for extra stability and strength
- Back pockets
- YKK® zipper
- Gusset in crotch for freedom of movement
- Plastic covered metal buttons
- Thigh pocket with fastener closure
- ID card loop
- Ruler pocket
- Reinforcement fabric at knee and bottom hem
- Articulated knees for optimal mobility
- Knee Pad pockets accessible from the inside
- Knee Pad position can be adjusted by 5 cm for optimal mobility
- Possibility to increase leg length by 5cm
- CSA Compliant Striping





## 70620 WAVERLEY PACKABLE SUIT

\$160.00

3M | YKK

**COLORS**  
360 HI VIS YELLOW

**SIZES**  
XS-5XL

**FABRIC**  
300 Denier 100% Polyester with PU coating 200 g/m2

### CERTIFICATION

**JACKET:**

- ANSI/ISEA 107 Type R Cl 3
- CSA Z96 Cl 3, Level 2

**BIB PANT:**

- ANSI/ISEA 107 Type E
- CSA Z96 Cl 2, Level 2

- **Jacket:**
- Waterproof
- Taped Seams
- Removable Hood with Drawcord (also Serves as Carrying Case for Jacket and Bib)
- Stand Up Corduroy Collar
- Vented Chest and Back
- 2 Front Pockets with Snap Closure
- Snap Adjustment at Sleeve Hem
- Full Zip Front Closure

- **Bib Pant:**
- Waterproof
- Taped Seams
- Adjustable Suspenders
- Front Fly with Velcro Closure
- Quick Snap Adjustment at Waist and Leg Hem

360

## 79883 MANCHESTER BEANIE

\$20.00

**COLORS**  
972 DARK GREY/ORANGE, 993 BLACK/YELLOW

**SIZES**  
STD

**FABRIC**  
Main fabric: 100% Acrylic

- Knitted beanie
- Reversible design
- Water repellent fiber



993

972



## 79528 HH LOGO WEBBING BELT

\$20.00

**COLORS**  
290 DARK ORANGE, 360 YELLOW

**SIZES**  
STD

**FABRIC**  
Main fabric: 96% Cotton, 4% Spandex Stretch Twill

- Full stretch
- Buckle with HH WW logo
- Width: 1.5"



360

290





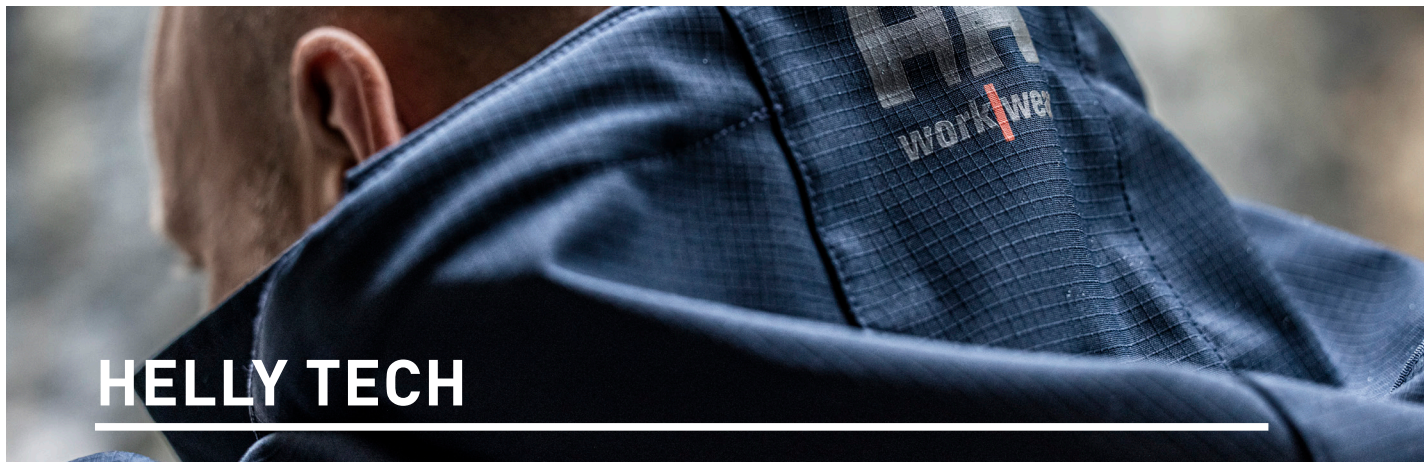


A close-up photograph of an orange raincoat sleeve, covered in water droplets. The sleeve features a black rectangular logo with the letters 'HH' in orange and the word 'workwear' in white below it. The background is a blurred forest floor with fallen leaves and branches.

# RAINWEAR







# HELLY TECH

bluesign  
approved



990

590

## 71080 KENSINGTON SHELL JACKET

\$195.00

HELLY TECH®  
PROFESSIONAL

YKK

AMANN  
STRECH  
PROTECTOR

### COLORS

590 NAVY, 990 BLACK

### SIZES

S-4XL

### FABRIC

Main fabric: 100% Polyester - 215 g/m²  
Lining: 100% Polyester

### ÖKO-TEX/BLUESIGN

OEKO-TEX® & bluesign® approved product

### WATERPROOF/BREATHABILITY

20.000/15.000



- Helly Tech® Professional
- Waterproof, windproof and breathable
- Fully taped construction
- Detachable hood
- Vertical and horizontal hood adjustment
- Collar adjustment on center back
- Brushed polyester inside collar
- No shoulder seams
- YKK® front zipper with chin protector
- Napoleon pocket, no need to open the jacket to access
- Hand pockets with YKK® zipper
- Hand pockets with brushed lining
- Inner chest pocket
- YKK® zipper for underarm ventilation
- Embellishment zipper
- Articulated sleeves for optimal mobility
- Adjustable cuffs
- Extended back for improved comfort
- Reflective details

bluesign  
approved



990

590

## 71240 W LUNA SHELL JACKET

\$195.00

HELLY TECH®  
PROFESSIONAL

YKK

AMANN  
STRECH  
PROTECTOR

### COLORS

590 NAVY, 990 BLACK

### SIZES

XS-2XL

### FABRIC

Main fabric: 100% Polyester - 215 g/m²  
Lining: 100% Polyester

### ÖKO-TEX/BLUESIGN

OEKO-TEX® approved main fabric & bluesign® approved product

### WATERPROOF/BREATHABILITY

20.000/15.000



- Helly Tech® Professional
- Waterproof, Windproof, Breathable
- Fully taped construction
- No shoulder seams
- Detachable hood
- Vertical and horizontal hood adjustment
- Collar adjustment on center back
- Brushed polyester inside collar
- YKK® front zipper with chin protector
- Hand pockets with YKK® zipper
- Hand pockets with brushed lining
- YKK® zipper for underarm ventilation
- Embellishment zipper
- Articulated sleeves for optimal mobility
- Adjustable cuffs
- Adjustable hem with elastic drawcord inside hand pocket
- Extended back for improved comfort
- Reflective details

bluesign  
approved



590

990

## 71290 OXFORD SHELL JACKET

\$165.00

HELLY TECH®  
PERFORMANCE

YKK

AMANN  
STRECH  
PROTECTOR

### COLORS

590 NAVY, 990 BLACK

### SIZES

S-4XL

### FABRIC

Main fabric: 100% Polyester - 255 g/m²

### ÖKO-TEX/BLUESIGN

OEKO-TEX® approved main fabric & bluesign® approved product

### WATERPROOF/BREATHABILITY

10.000/10.000



- Helly Tech® Performance
- Waterproof, Windproof, Breathable
- Fully taped construction
- No shoulder seams
- Detachable hood
- Adjustable hood with drawcord and fastener
- Brushed polyester inside collar
- YKK® front zipper with chin protector
- Inner chest pocket
- Hand pockets with YKK® zipper
- Embellishment zipper
- Articulated sleeves for optimal mobility
- Adjustable cuffs
- Adjustable hem with drawcord inside hand pocket
- Extended back for improved comfort
- Reflective details



bluesign  
moniz



990

590

## 71043 MANCHESTER SHELL JACKET

\$130.00

HELLY TECH®  
PROTECTION

YKK®

**COLORS**  
590 NAVY, 990 BLACK

**SIZES**  
XS-3XL

**FABRIC**  
Main fabric: 100% Polyester - 150 g/m²

**ÖKO-TEX/BLUESIGN**  
bluesign® approved main fabric

Zip in compatible with 72065 Manchester Zip In Fleece Jacket  
& 72095 Manchester Zip In Fleece Vest

- Helly Tech® Protection
- Waterproof, Windproof, Breathable
- Fully taped construction
- Detachable hood
- Adjustable hood with drawcord and fastener
- Brushed polyester inside collar
- No shoulder seams
- YKK® front zipper with chin protector
- Chest pocket with YKK® zipper
- Hand pockets with YKK® zipper
- Hand pockets with brushed lining
- Embellishment zipper
- Adjustable cuffs
- Adjustable hem with elastic drawcord



bluesign  
moniz



990

## 74044 W MANCHESTER SHELL JACKET

\$130.00

HELLY TECH®  
PROTECTION

YKK®

**COLORS**  
990 BLACK

**SIZES**  
S-2XL

**FABRIC**  
Main fabric: 100% Polyester - 150 g/m²  
Lining: 100% Polyester

**ÖKO-TEX/BLUESIGN**  
OEKO-TEX® approved main fabric & bluesign® approved product

- Helly Tech® Protection
- Waterproof, Windproof, Breathable
- Fully taped construction
- Detachable hood
- Adjustable hood with drawcord and fastener
- Brushed polyester inside collar
- No shoulder seams
- YKK® front zipper with chin protector
- Chest pocket with YKK® zipper
- Hand pockets with YKK® zipper
- Hand pockets with brushed lining
- Embellishment zipper
- Adjustable cuffs
- Adjustable hem with elastic drawcord
- ID card loop



bluesign  
moniz



990

## 71445 MANCHESTER SHELL PANT

\$80.00

HELLY TECH®  
PROTECTION

**COLORS**  
990 BLACK

**SIZES**  
XS-4XL

**FABRIC**  
Main fabric: 100% Polyester - 150 g/m²

**ÖKO-TEX/BLUESIGN**  
bluesign® approved main fabric

- Helly Tech® Protection
- Waterproof, Windproof, Breathable
- Fully taped construction
- Two pockets at front with zippers



bluesign  
moniz



990

530

## 70127 MANCHESTER RAIN JACKET

\$95.00

HELLY TECH®  
PROTECTION

YKK®

**COLORS**  
530 RACER BLUE, 990 BLACK

**SIZES**  
XS-4XL

**FABRIC**  
Main fabric: 100% Polyester - 108 g/m²  
Lining: 100% Polyester

**ÖKO-TEX/BLUESIGN**  
bluesign® approved main fabric

- Helly Tech® Protection
- Waterproof, Windproof, Breathable
- Fully taped construction
- Two hand pockets
- Opening in back for ventilation



bluesign®  
product



990

70427 MANCHESTER RAIN PANT

\$55.00

HELLY TECH®  
PROTECTION

**COLORS**  
990 BLACK

**SIZES**  
XS-4XL

**FABRIC**  
Main fabric: 100% Polyester - 108 g/m²  
Lining: 100% Polyester

**ÖKO-TEX/BLUESIGN**  
bluesign® approved main fabric

- Helly Tech® Protection
- Waterproof, Windproof, Breathable
- Fully taped construction
- Elastic at waist
- Adjustable bottom leg with fastener





# GALE

## 70282 GALE RAIN JACKET

\$100.00

YKK

### COLORS

290 DARK ORANGE, 480 ARMY GREEN, 590 NAVY, 990 BLACK

### SIZES

XS-4XL

### FABRIC

Main fabric: 100% PU on 100% Polyester knit - 240 g/m²

- Durable Waterproof Fabric with Stretch
- Packable hood in collar
- Adjustable hood with elastic drawcord
- Double main fabric front flap
- Napoleon pocket with YKK® zipper and hole for head phones
- Hand pockets
- Neoprene cuffs
- Adjustable hem with elastic drawcord
- Extended back for improved comfort



290

990

590



## 70582 GALE RAIN BIB

\$85.00

YKK

### COLORS

290 DARK ORANGE, 480 ARMY GREEN, 590 NAVY, 990 BLACK

### SIZES

XS-4XL

### FABRIC

Main fabric: 100% PU on 100% Polyester knit - 240 g/m²

- Durable Waterproof Fabric with Stretch
- Elastic suspenders
- Inner chest pocket with YKK® zipper
- Adjustable waist with snap button closure
- Adjustable bottom leg with snap buttons



290

480

990

590



## 70485 GALE RAIN PANT

\$60.00

### COLORS

290 DARK ORANGE, 480 ARMY GREEN, 590 NAVY, 990 BLACK

### SIZES

XS-4XL

### FABRIC

Main fabric: 100% PU on 100% Polyester knit - 240 g/m²

- Durable Waterproof Fabric with Stretch
- Adjustable waist
- Adjustable bottom leg with snap buttons



290

990

690





# LUNA RAIN

## 70286 W LUNA RAIN JACKET

\$100.00



990

480

590

YKK

AMANN  
SICHT

### COLORS

480 ARMY GREEN, 590 NAVY, 990 BLACK

### SIZES

XS-2XL

### FABRIC

Main fabric: 100% PU on 100% Polyester knit - 240 g/m<sup>2</sup>

- Waterproof Stretch Fabric
- Packable hood in collar
- Adjustable hood with elastic drawcord
- Double main fabric front flap
- Napoleon pocket with YKK® zipper and hole for head phones
- Hand pockets
- Neoprene cuffs
- Adjustable hem with elastic drawcord
- Extended back for improved comfort



## 70486 W LUNA RAIN PANT

\$60.00



990

481

590

### COLORS

480 ARMY GREEN, 590 NAVY, 990 BLACK

### SIZES

XS-2XL

### FABRIC

Main fabric: 100% PU on 100% Polyester knit - 240 g/m<sup>2</sup>

- Waterproof Stretch Fabric
- Adjustable waist
- Adjustable bottom leg with snap buttons





# IMPERTECH



770

## 70149 IMPERTECH LONG COAT

\$95.00

### COLORS

770 GREEN BROWN

### SIZES

XS-4XL

### FABRIC

PU w/knit backing, 220g/m2

- Fully Waterproof Impertech Fabric
- Full Stretch Fabric for Ease of Movement
- Soft Circular Knit Backing
- .24 mm circular knit polyester backing with stretch polyurethane coating
- Generous cut
- 3/4 Length
- MicroWeld™ seam construction
- Double entry front pockets
- Front zip with snap storm flap
- Back cape for ventilation
- Attached hood tucks into collar
- Velcro adjustable sleeve cuff
- Two waterproof pockets and hand warmer pockets
- Blood Borne Pathogen tested



990

770

## 70148 IMPERTECH JACKET

\$85.00

### COLORS

770 GREEN BROWN, 990 BLACK

### SIZES

cc.770 XS-6XL  
cc.990 S-4XL

### FABRIC

PU w/knit backing, 220g/m2

- Fully Waterproof Impertech Fabric
- Full Stretch Fabric for Ease of Movement
- Soft Circular Knit Backing
- .24 mm circular knit polyester backing with stretch polyurethane coating
- Generous cut
- MicroWeld™ seam construction
- Double entry front pockets
- Front zip with snap storm flap
- Back cape for ventilation
- Attached hood tucks into collar
- Velcro adjustable sleeve cuff
- Two waterproof pockets and hand warmer pockets
- Blood Borne Pathogen tested



990

770

## 70548 IMPERTECH BIB

\$85.00

### COLORS

770 GREEN BROWN, 990 BLACK

### SIZES

cc.770 XS-4XL  
cc.990 S-4XL

### FABRIC

PU w/knit backing, 220g/m2

- Fully Waterproof Impertech Fabric
- Full Stretch Fabric for Ease of Movement
- Soft Circular Knit Backing
- .24 mm circular knit polyester backing with stretch polyurethane coating
- High front/ lower back to keep you protected, yet ventilated
- Internal pocket with Velcro closure inside front of bib
- Heavy duty elastic with click type connectors
- Snap take up adjustment at waist
- Knee length boot zippers
- Double layer Impertech Fabric, edge stitched and welded on seat and knees for extra durability
- Blood Borne Pathogen Tested

## 70448 IMPERTECH PANT

\$70.00



990

770

### COLORS

770 GREEN BROWN, 990 BLACK

### SIZES

cc.770 XS-4XL

cc.990 S-4XL

### FABRIC

PU w/knit backing, 220g/m2

- Fully Waterproof Impertech Fabric
- Full Stretch Fabric for Ease of Movement
- Soft Circular Knit Backing
- .24 mm circular knit polyester backing with stretch polyurethane coating.
- Functional waist pant
- MicroWeld™ seam construction
- Elastic waistband with drawcord
- 13½" zipper and snap adjustment at hem
- Double layer Impertech™, edge stitched and welded on seat and knees for extra durability
- Blood Borne Pathogen tested

## 70317 IMPERTECH SANITATION JACKET

\$70.00



590

### COLORS

590 NAVY

### SIZES

XS-4XL

### FABRIC

.16 mm circular knit polyester backing with stretch polyurethane coating, 170g/m2

- Fully Waterproof Impertech Fabric
- Full Stretch Fabric for Ease of Movement
- Soft Circular Knit Backing
- .24 mm circular knit polyester backing with stretch polyurethane coating
- Attached hood with elastic for added protection
- Generously cut jacket with raglan sleeves
- Elastic on wrists for snug fit
- Over flap front closure with plastic snaps
- Back cape for ventilation
- MicroWeld™ seam construction
- Front zip with snap storm flap
- Blood Borne Pathogen tested

## 70417 IMPERTECH SANITATION BIB

\$70.00



590

### COLORS

590 NAVY

### SIZES

XS-4XL

### FABRIC

.16 mm circular knit polyester backing with stretch polyurethane coating, 170g/m2

- Fully Waterproof Impertech Fabric
- Full Stretch Fabric for Ease of Movement
- Soft Circular Knit Backing
- .24 mm circular knit polyester backing with stretch polyurethane coating
- High-waisted, functional bib pant
- Elastic at ankles for added protection
- Adjustable elastic suspenders
- Chest pocket with hook-and-loop closure on right side
- Snap adjustment at hem and waist
- MicroWeld™ seam construction
- Blood Borne Pathogen tested



## 70180 VOSS RAIN JACKET

\$65.00



990

590

310

YKK

### COLORS

310 LIGHT YELLOW, 590 NAVY, 990 BLACK

### SIZES

XS-4XL

### FABRIC

Main fabric: 100% Polyester - 170 g/m<sup>2</sup>, PU coated

- Packable hood in collar
- Adjustable hood with drawcord
- Adjustable cuff with snap buttons
- Adjustable hem with drawcord
- Reflective details



## 70480 VOSS RAIN PANT

\$40.00



990

590

310

### COLORS

310 LIGHT YELLOW, 590 NAVY, 990 BLACK

### SIZES

XS-4XL

### FABRIC

Main fabric: 100% Polyester - 170 g/m<sup>2</sup>, PU coated

- Waterproof full stretch fabric
- Elastic at waist
- Adjustable bottom leg with snap buttons
- Reflective details





PVC

## 70129 MANDAL JACKET

\$50.00



590 480 310 290

**COLORS**  
290 DARK ORANGE, 310 LIGHT YELLOW, 480 ARMY GREEN,  
590 CLASSIC NAVY

**SIZES**  
cc.290 S-6XL  
cc.310 & cc.480 XS-6XL  
cc.590 S-4XL

**FABRIC**  
Main fabric: 100% Polyester 410 g/m<sup>2</sup>, PVC coated

- Waterproof fabric and construction
- Adjustable hood with drawcord
- Two hand pockets
- Adjustable cuff with snap buttons



## 70529 MANDAL BIB

\$50.00



590 480 310 290

**COLORS**  
290 DARK ORANGE, 310 LIGHT YELLOW, 480 ARMY GREEN,  
590 CLASSIC NAVY

**SIZES**  
cc.290 & cc.590 S-4XL  
cc.310 & cc.480 XS-6XL

**FABRIC**  
Main fabric: 100% Polyester 410 g/m<sup>2</sup>, PVC coated

- Waterproof fabric and construction
- Adjustable elastic suspenders
- Inner chest pocket with zipper
- Adjustable waist with snap buttons



## 70429 MANDAL PANT

\$37.00



480 310

**COLORS**  
310 LIGHT YELLOW, 480 ARMY GREEN

**SIZES**  
S-4XL

**FABRIC**  
Main fabric: 100% Polyester 410 g/m<sup>2</sup>, PVC coated

- Waterproof fabric and construction
- Elastic at waist
- Adjustable hem with snap button closure





**70215 PROCESSING JACKET****\$50.00**

900

**COLORS**  
900 WHITE**SIZES**  
XS-4XL**FABRIC**  
100% Polyester - 410 g/m<sup>2</sup> . PVC coated | .35 mm PVC

- Waterproof fabric and construction
- Mildew resistant
- No shoulder seams
- Storm flap
- Push button closure
- Push button adjustment at cuffs

**70525 PROCESSING BIB****\$50.00**

900

**COLORS**  
900 WHITE**SIZES**  
XS-4XL**FABRIC**  
100% Polyester - 410 g/m<sup>2</sup> . PVC coated | .35 mm PVC

- Waterproof fabric and construction
- Mildew resistant
- Inner chest pocket with zipper
- Adjustable elastic suspenders

**79816 SVOLVÆR SOU'WESTER****\$24.00**

310

**COLORS**  
310 LIGHT YELLOW**SIZES**  
STD**FABRIC**  
Main fabric: 100% Polyester - 410 g/m<sup>2</sup> - PU coated

- Waterproof fabric and construction
- Lining
- Ear flaps
- Chin strap





## COMMERCIAL FISHING

### 70201 ARMOUR JACKET

\$210.00



550

**COLORS**  
550 COBALT

**SIZES**  
S-5XL

**FABRIC**  
Tear resistant outer shell of durable, high tenacity  
420 Denier Nylon, Inner layer of 170 g/m<sup>2</sup> PU coated  
Nylon knit PU Stretch waterproof fabric

- Generously cut 3 panel drawcord hood with cordlocks
- Durable inner and outer storm flap for durability
- Inner storm cuffs for comfort and dryness
- Concealed stainless steel rust resistant snap closure
- Inner layer has MicroWeld™ seams

### 70501 ARMOUR BIB

\$180.00



550

**COLORS**  
550 COBALT

**SIZES**  
S-5XL

**FABRIC**  
Tear resistant outer shell of durable, high tenacity  
420 Denier Nylon, Inner layer of 170 g/m<sup>2</sup> PU coated  
Nylon knit PU Stretch waterproof fabric

- Side gusset for easy entry
- Adjustable suspenders
- Quick release buckles
- Inner layer has MicroWeld™ seams





480 990 299

## 70283 STORM RAIN JACKET

\$155.00

YKK

### COLORS

299 DARK ORANGE / BLACK, 480 ARMY GREEN, 990 BLACK

### SIZES

XS-4XL

### FABRIC

Main fabric: 100% PVC on 100% Polyester knit - 310g/m²

- Adjustable hood with elastic drawcord and fastener
- No shoulder seams
- Double main fabric front flap
- YKK® front zipper
- Napoleon pocket with YKK® zipper and hole for head phones
- Inside stash pocket
- Neoprene cuffs



480 990 299

## 70583 STORM RAIN BIB

\$100.00

YKK

### COLORS

299 DARK ORANGE / BLACK, 480 ARMY GREEN, 990 BLACK

### SIZES

XS-4XL

### FABRIC

Main fabric: 100% PVC on 100% Polyester knit - 310g/m²

- Elastic suspenders
- Inner chest pocket with YKK® zipper
- Adjustable waist with snap button closure



410

## 70123 ENGRAM JACKET

\$125.00

### COLORS

410 LIGHT GREEN

### SIZES

XS-5XL

### FABRIC

480 g, 74% PVC 26% Cotton

- PVC coated Cotton 450 g/m²
- Resistance to fish oil, sunlight, mildew and saltwater
- Attached, generously cut 3 panel hood for better fit
- Inside stormlap
- Concealed rust-resistant snap closure
- MicroWeld™ seams
- Cold Crack Rated to -30°C



410

## 70124 ENGRAM DOUBLE BIB PANT

\$120.00

### COLORS

410 LIGHT GREEN

### SIZES

XS-5XL

### FABRIC

480 g, 74% PVC 26% Cotton

- PVC coated Cotton 450 g/m²
- Resistance to fish oil, sunlight, mildew and saltwater
- Side gusset for easy entry
- Adjustable suspenders
- Can be worn back to front for longer wear
- Generously cut
- MicroWeld™ seams
- Cold Crack Rated to -30°C

## 70300 HIGHLINER JACKET

\$110.00



490

**COLORS**  
490 DARK GREEN

**SIZES**  
XS-5XL

**FABRIC**  
PVC coated Cotton 450 g/m<sup>2</sup>

- .45 P-Series PVC on high-quality cotton canvas
- 450g
- Special PVC plasticizers added for better flexibility
- Cold and Oil resistant
- Inside fabric is impregnated prior to coating to reduce the absorptions of moisture and odor retention from fish oils
- Generously cut with raglan sleeve construction
- Attached three-panel hood
- Double Storm flap
- Non-corrosive snaps concealed under front placket

## 70500 HIGHLINER BIB

\$110.00



490

**COLORS**  
490 DARK GREEN

**SIZES**  
S-4XL

**FABRIC**  
PVC coated Cotton 450 g/m<sup>2</sup>

- .45 P-Series PVC on high-quality cotton canvas, 450g
- Symmetrically cut bib can be reversed to be worn back-to-front for extended wear
- Adjustable heavy duty suspender
- Generously cut with side gusset for easy entry
- MicroWeld seam construction

## 70187 WEST COAST JACKET

\$110.00



992

**COLORS**  
992 BLACK/DARK ORANGE

**SIZES**  
S-4XL

**FABRIC**  
100% Polyester-220g/m<sup>2</sup>, PU coated

- Waterproof fabric and construction
- No shoulder seams
- Zipper closure
- Storm flap
- Brushed polyester inside collar
- Reflective elements
- Packable hood with draw cord adjustment at front and velcro adjustment at back
- Two pockets at front with flaps
- Chest and sleeve pocket with water repellent zipper
- Ventilation at back
- Draw cord adjustment at hem
- Velcro adjustment at edge of sleeve
- Tail drop

## 70206 ROAN ANORAK

\$85.00



399

**COLORS**  
399 OCHRE/CHARCOAL

**SIZES**  
S-4XL

**FABRIC**  
PVC Coated 100% Polyester - 220 g/m<sup>2</sup>

- 100% Polyester - 220 g/m<sup>2</sup> - PVC coating
- Waterproof fabric and construction
- Oil resistant
- Hood with draw cord and velcro adjustment, designed to be used with a helmet
- Chest pocket with flap and push button
- Draw cord adjustment at hem
- Neoprene cuffs
- Brushed inside
- 1/2 zip opening
- Click-on loop inside hem for ID card holder









**WINTER**



# BIFROST



bluesign  
partner



990

## 71362 BIFROST WINTER PARKA

\$460.00

HELLY TECH®  
PROFESSIONAL



**COLORS**  
990 BLACK

**SIZES**  
2XS-4XL

**FABRIC**  
Main fabric: 100% Polyester - 215 g/m²  
Secondary Main fabric: 100% Polyamide - 270 g/m²  
Lining: 100% Polyester  
Insulation body: 100% Recycled Polyester  
Insulation on shoulders, collar and hood: 80% Recycled Polyester, 20% Polyester - 200 g/m²

**ÖKO-TEX/BLUESIGN**  
OEKO-TEX® approved main fabric & bluesign® approved product

**WATERPROOF/BREATHABILITY**  
20.000/15.000



- Helly Tech® Professional
- H²FLOW™ technology
- Fully taped construction
- Internal Life Pocket™ for phone, no need to open the parka to access
- Internal Life Pocket™ for tablet, no need to open the parka to access
- Fully taped construction
- Downfeel recycled blowable insulation
- Cordura® fabric reinforcement on shoulders and elbows
- No shoulder seams
- Detachable hood
- Vertical and horizontal hood adjustment
- Detachable faux fur
- Collar adjustment on center back
- Padded collar for extra comfort
- Brushed polyester inside collar
- YKK® front zipper with chin protector

- Double front storm flap
- Loop at storm flap for easy use with gloves
- Chest pockets with YKK® zipper
- Chest pockets with brushed lining
- Dual hand pockets with brushed lining
- YKK® zipper for underarm ventilation
- Inside stash pockets
- Articulated sleeves for optimal mobility
- Wrist Gaiters
- Embellishment zipper
- Adjustable waist with elastic drawcord
- Draft stop inner skirt
- YKK® side zipper for optimal mobility
- Extended back for improved comfort
- Reflective details

bluesign  
partner



990

## 71640 BIFROST SUIT

\$400.00

HELLY TECH®  
PERFORMANCE



**COLORS**  
990 BLACK

**SIZES**  
XS-4XL

**FABRIC**  
Main fabric: 100% Polyester - 210 g/m²  
Reinforcement: 100% Polyamide - 270 g/m²  
Lining: 100% Polyester  
Insulation: 100% Recycled Polyester  
Secondary Insulation: 80% Recycled Polyester, 20% Polyester

**ÖKO-TEX/BLUESIGN**  
OEKO-TEX® approved main fabric & bluesign® approved product



- Helly Tech® Performance
- Life Pocket™ for phone and tablets
- Primaloft® Black Eco Insulation
- Waterproof, windproof and breathable
- Fully taped construction
- No shoulder seams
- Detachable hood
- Vertical and horizontal hood adjustment
- Helmet compatible hood
- Padded collar for extra comfort
- Brushed polyester inside collar
- 2-way YKK® front zipper with chin protector
- Front storm flap
- Embellishment zipper
- Articulated sleeves for optimal mobility
- Adjustable cuffs
- Wrist Gaiters
- Removable belt

- Broad center back belt loop for extra strength and stability
- Thigh pocket with fastener closure
- Ruler pocket with double bottom for extra durability
- Boot zipper with storm flap and fastener closure
- Cordura® fabric reinforcement at knee and bottom leg
- Kneepad pockets
- Possibility to increase leg length by 5cm
- ID card loop
- Reflective details
- 360 degree reflective transfer print on body, sleeves, shoulders and bottom legs
- Hand pockets
- YKK® zipper for underarm ventilation
- Double front storm flap



990

260

## 71316 ALNA POLAR PARKA CSA

NEW

\$375.00

HELLY TECH®

LIFE POCKET

PROTECT

YKK®

AMANN

### COLORS

260 ORANGE, 990 BLACK

### SIZES

XS-4XL

### FABRIC

Shell: 100% Polyester  
Insulation body: 100% Polyester (Recycled)  
Lining: 100% Polyester (Recycled)

### CERTIFICATION

CSA Z96-2015

- Fully taped construction
- Internal Life Pocket™ for phone, no need to open the jacket to access
- Internal Life Pocket™ for tablet, no need to open the jacket to access
- Fully taped construction
- Downfeet recycled blowable
- Insulation
- Cordura® fabric reinforcement on shoulders and elbows
- No shoulder seams
- Detachable hood
- Vertical and horizontal hood adjustment
- Collar adjustment on center back
- Padded collar for extra comfort
- Brushed polyester inside collar
- YKK® front zipper with chin protector
- Double front storm flap
- Loop at storm flap for easy use with gloves
- Chest pockets with YKK® zipper
- Chest pockets with brushed lining
- Dual hand pockets with brushed lining
- YKK® zipper for underarm ventilation
- Inside stash pockets
- Articulated sleeves for optimal mobility
- Wrist Gaiters
- Embellishment zipper
- Adjustable hem with drawcord inside hand pocket
- Extended back for improved comfort
- Reflective details



990

260

## 71516 ALNA POLAR BIB CSA

NEW

\$275.00

HELLY TECH®

LIFE POCKET

PROTECT

YKK®

### COLORS

260 ORANGE, 990 BLACK

### SIZES

XS-4XL

### FABRIC

Shell: 100% Polyester  
Insulation: 100% Polyester (Recycled)  
Lining: 100% Polyester (Recycled)

### CERTIFICATION

CSA Z96-2015

- Fully taped construction
- Elastic suspenders
- Elastic waist
- Adjustable waist with fastener
- Hand pockets with YKK® zipper
- Internal Life Pocket™ for phone
- Thigh pockets with fastener closure
- ID card loop
- Ruler pocket in Cordura® reinforcement fabric
- Knee high boot zipper with storm flap & fastener closure
- Cordura® fabric reinforcement at knee and bottom leg
- Articulated knees for optimal mobility
- Knee Pad pockets accessible from the inside
- Knee Pad position can be adjusted by 5cm for optimal mobility
- Boot gaiters with gripper
- Possibility to increase leg length by 5cm
- Reflective details



590

## 76313 WEYBURN PARKA

\$320.00

### COLORS

590 NAVY

### SIZES

XS-5XL

### FABRIC

Beaver Nylon outer shell 240 g/m²  
13mm Thermal Pile lining

- 3M™ Scotchlite™ Reflective Material in a CSA pattern
- PU coated Oxford Nylon reinforcement on elbow area for abrasion and durability
- YKK one-way vislon heavy duty front zipper with full outer storm flap
- Knit inner storm cuffs at wrists for heat retention
- Inner windbelt with snap closure for added protection
- Front chest pocket with flap for storage and pen pocket
- Large front cargo pockets with snap closure and side entrance
- Inside storage pocket
- Elastic back waist for fitting comfort
- Detachable hood with 3M™ Scotchlite™ Reflective Material included
- Durable water repellent finish
- Generous fit to accommodate layering
- Double needle top stitching provides durability and strength to seams



590

## 76512 THOMPSON BIB PANT

\$275.00

### COLORS

590 NAVY

### SIZES

XS-5XL

### FABRIC

Main fabric: 100% Polyester - 197 g/m²  
Insulation: 100% Polyester -350 g/m² in body and 80 g/m² in sleeves

- 3M™ Scotchlite™ Reflective Material striping on legs
- PU coated Oxford Nylon reinforcement on bottom, knee, and hem facing areas for abrasion and durability
- Elastic adjustable suspenders
- YKK two-way, vislon heavy duty front zipper with full outer storm flap
- Inside storage pocket
- Two front pockets
- Two Rear Pockets
- Elastic back waist for fitting comfort
- Full leg YKK two-way, heavy duty zipper with outer storm flap with pass through option
- Snap adjustments on legs
- Durable water repellent finish
- Generous fit to accommodate layering
- Double needle top stitching provides durability and strength to seams





990

590

## 71345 KENSINGTON WINTER JACKET

\$260.00

HELLY TECH®

lifaloft

LIFE POCKET

YKK

YKK

blue  
sign®

### COLORS

590 NAVY, 990 BLACK

### SIZES

S-4XL

### FABRIC

Main fabric: 100% Polyester - 215 g/m²

Lining: 100% Polyester

Insulation: 70% Polypropylene, 30% Polyester - 100 g/m²

### ÖKO-TEX/BLUESIGN

OEKO-TEX® approved main fabric &amp; bluesign® approved product

### WATERPROOF/BREATHABILITY

20.000/15.000



- Helly Tech® Professional
- Waterproof, windproof and breathable
- LIFALOFT™ insulation by PrimaLoft®
- Fully taped construction
- Detachable hood
- Vertical and horizontal hood adjustment
- Collar adjustment on center back
- Padded collar for extra comfort
- Brushed polyester inside collar
- No shoulder seams
- YKK® front zipper with chin protector
- Life Pocket™
- Hand pockets with YKK® zipper
- Hand pockets with brushed lining
- YKK® zipper for underarm ventilation
- Inside stash pockets
- Embellishment zipper
- Articulated sleeves for optimal mobility
- Adjustable cuffs
- Wrist Gaiters
- Adjustable hem with elastic drawcord inside hand pocket
- Extended back for improved comfort



990

590

## 71304 W LUNA WINTER JACKET

\$260.00

HELLY TECH®

LIFE POCKET

YKK

YKK

blue  
sign®

### COLORS

590 NAVY, 990 BLACK

### SIZES

XS-2XL

### FABRIC

Main fabric: 100% Polyester - 215 g/m²

Lining: 100% Polyamide

Insulation: 80% Recycled Polyester, 20% Polyester - 133g/m² in body, 80 g/m² in sleeves and hood.

### ÖKO-TEX/BLUESIGN

OEKO-TEX® approved main fabric &amp; bluesign® approved product

### WATERPROOF/BREATHABILITY

20.000/15.000



- Helly Tech® Professional
- Waterproof, Windproof, Breathable
- Fully taped construction
- PrimaLoft® Insulation
- No shoulder seams
- Detachable hood
- Vertical and horizontal hood adjustment
- Collar adjustment on center back
- Padded collar for extra comfort
- Brushed polyester inside collar
- YKK® front zipper with chin protector
- Life Pocket™
- Hand pockets with YKK® zipper and brushed lining
- YKK® zipper for underarm ventilation
- Inside stash pockets
- Embellishment zipper
- Articulated sleeves for optimal mobility
- Adjustable cuffs
- Wrist Gaiters
- Adjustable hem with elastic drawcord inside hand pocket
- Extended back for improved comfort
- Reflective details



990

590

## 73290 OXFORD WINTER JACKET

\$180.00

HELLY TECH®

YKK

blue  
sign®

### COLORS

590 NAVY, 990 BLACK

### SIZES

S-4XL

### FABRIC

Main fabric: 100% Polyester - 255 g/m²

Secondary Main fabric: 65% Polyester, 35% Cotton - 310 g/m²

Insulation: 80% Recycled Polyester, 20% Polyester - 100 g/m² in body &amp; 80 g/m² in sleeves

### ÖKO-TEX/BLUESIGN

OEKO-TEX® approved main fabric &amp; bluesign® approved product



- Helly Tech® Performance fabric
- Critically taped
- No shoulder seams
- Detachable hood
- Adjustable hood with drawcord and fastener
- Brushed polyester inside collar
- YKK® front zipper with chin protector
- Full inner front placket
- Inner chest pocket
- Hand pockets with YKK® zipper
- Embellishment zipper
- Articulated sleeves for optimal mobility
- Adjustable cuffs
- Adjustable hem with drawcord inside hand pocket
- Extended back for improved comfort
- Reflective details



## 76201 BERG JACKET

\$150.00



990

979

130

### COLORS

130 RED/CHARCOAL, 979 GREY/CHARCOAL, 990 BLACK

### SIZES

S-4XL

### FABRIC

Main fabric: 100% Polyester - 197g/m²

Insulation: 100% Polyester - 160 g/m² in body, 120 g/m² in sleeves

### ÖKO-TEX/BLUESIGN

OEKO-TEX® approved main fabric



- 160g Insulation in the Body & 120g in Sleeves
- No shoulder seams
- Reflective elements
- Detachable hood
- Brushed polyester inside collar
- Chin guard
- ID-Card loop

## 76400 BERG PANT

\$120.00



990

**COLORS**  
990 BLACK

**SIZES**  
S-4XL

**FABRIC**  
100% polyester, Oxford treated, 200 g/m  
Insulation: 100% polyester, 120 g  
Lining 100% nylon

**ÖKO-TEX/BLUESIGN**  
OEKO-TEX® approved main fabric

- Fleece on inside of back
- Removable shoulder straps
- Fly with zip
- Elastic in waist
- Two front pockets with zip
- Zip in legs with wind flap
- Velcro adjustment in cuffs
- Knee pad pockets on inside



bluesign  
product

## 71351 MANCHESTER WINTER JACKET

\$125.00



999

**COLORS**  
999 BLACK

**SIZES**  
XS-4XL

**FABRIC**  
Main fabric: 100% Polyester - 150 g/m<sup>2</sup>  
Lining: 100% Polyamide  
Insulation: 80% Recycled Polyester, 20% Polyester - 100 g/m<sup>2</sup> in  
body & 80 g/m<sup>2</sup> in sleeves and hood

**ÖKO-TEX/BLUESIGN**  
bluesign® approved main fabric

- Helly Tech® Protection
- Waterproof, Windproof, Breathable
- Fully taped construction
- Primaloft® Black Eco Insulation
- Adjustable hood with drawcord and fastener
- YKK® front zipper with chin protector
- Hand pockets with YKK® zipper
- Inner chest pocket
- Embellishment zipper
- Adjustable cuffs
- Adjustable hem with elastic drawcord
- Reflective details



bluesign  
product

## 71452 MANCHESTER WINTER PANT

\$85.00



990

**COLORS**  
990 BLACK

**SIZES**  
XS-4XL

**FABRIC**  
Main fabric: 100% Polyester - 150 g/m<sup>2</sup>  
Lining: 100% Polyamide  
Insulation: 80% Recycled Polyester, 20% Polyester - 60 g/m<sup>2</sup>

**ÖKO-TEX/BLUESIGN**  
bluesign® approved main fabric

- Helly Tech® Protection
- Waterproof, Windproof, Breathable
- Fully taped construction
- Primaloft® Black Eco Insulation
- Adjustable waist with drawcord
- Knee high boot zipper with storm flap
- Reflective details









A man with a shaved head and a short beard is looking down. He is wearing a black long-sleeved shirt with the Helly Hansen logo on the left chest. The background is a rustic interior with wooden beams and windows. The word 'BASELAYER' is written in white capital letters inside a white rectangular box.

# BASELAYER

**HH**  
workwear





WARMTH LEVEL

## LIFA® MERINO



595

592

990

### 75106 HH LIFA MERINO CREWNECK

\$80.00

lifa |

#### COLORS

592 NAVY/DARK ORANGE, 595 NAVY/STONE BLUE, 990 BLACK

#### SIZES

XS-4XL

#### FABRIC

Main fabric: 57% Merino, 43% Polypropylene, 215 g/m²

#### ÖKO-TEX/BLUESIGN

OEKO-TEX® approved main fabric

- Lifa® Stay Warm Technology
- Lifa® Merino
- No shoulder seams
- No side seams
- Flatlock seams for extra comfort



990

### 75506 HH LIFA MERINO PANT

\$80.00

lifa |

#### COLORS

990 BLACK

#### SIZES

XS-4XL

#### FABRIC

Main fabric: 57% Merino, 43% Polypropylene - 215 g/m²

#### ÖKO-TEX/BLUESIGN

OEKO-TEX® approved main fabric

- Lifa® Stay Warm Technology
- Lifa® Merino
- Elastic in waist for perfect fit and freedom of movement
- Gusset at crotch
- Flatlock seams for extra comfort





990

## 75210 W HH LIFA MERINO HALF ZIP

\$90.00

lifa | YKK

**COLORS**  
990 BLACK

**SIZES**  
XS-2XL

**FABRIC**  
Main fabric: 57% Merino, 43% Polypropylene - 215 g/m²

**ÖKO-TEX/BLUESIGN**  
OEKO-TEX® approved main fabric

- Lifa® Stay Warm Technology
- Lifa® Merino
- YKK® front half zip with back placket and chin protector
- No shoulder seams
- No side seams
- Flatlock seams for extra comfort



990

930

595

## 75209 W HH LIFA MERINO CREWNECK

\$80.00

lifa |

**COLORS**  
595 NAVY/STONE BLUE, 930 GREY MELANGE, 990 BLACK

**SIZES**  
XS-2XL

**FABRIC**  
Main fabric: 57% Merino, 43% Polypropylene - 215 g/m²

**ÖKO-TEX/BLUESIGN**  
OEKO-TEX® approved main fabric

- Lifa® Stay Warm Technology
- Lifa® Merino
- No shoulder seams
- No side seams
- Flatlock seams for extra comfort



990

## 75520 W HH LIFA MERINO PANT

\$80.00

lifa |

**COLORS**  
990 BLACK

**SIZES**  
XS-2XL

**FABRIC**  
Main fabric: 57% Merino, 43% Polypropylene - 215 g/m²

**ÖKO-TEX/BLUESIGN**  
OEKO-TEX® approved main fabric

- Lifa® Stay Warm Technology
- Lifa® Merino
- Elastic in waist for perfect fit and freedom of movement
- Gusset at crotch
- Flatlock seams for extra comfort







990

## 79365 HH LIFA MERINO PRO BALACLAVA

NEW

\$60.00

AVAILABLE IN OCTOBER

lifa |

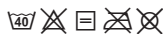
**COLORS**  
990 BLACK

**SIZES**  
STD

**FABRIC**  
Main fabric: 57%Merino, 43% Polypropylene - 215 g/m²  
Secondary Main fabric: 100% Polyamide - 270 g/m²

**ÖKO-TEX/BLUESIGN**  
OEKO-TEX® approved main fabric

- Lifa® Stay Warm Technology
- Lifa® Merino
- Mesh ventilation for added breathability
- Flatlock seams for extra comfort



990

## 79707 HH LIFA MERINO BALACLAVA

\$26.00

lifa |

**COLORS**  
990 BLACK

**SIZES**  
STD

**FABRIC**  
Main fabric: 57%Merino, 43% Polypropylene - 215 g/m²

**ÖKO-TEX/BLUESIGN**  
OEKO-TEX® approved main fabric

- Lifa® Stay Warm Technology
- Lifa® Merino
- Flatlock seams for extra comfort



558

990

## 79705 HH LIFA MERINO BEANIE

\$25.00

lifa |

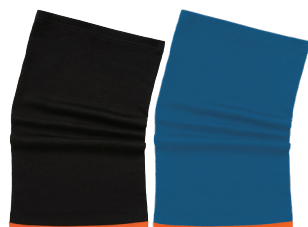
**COLORS**  
558 STONE BLUE, 990 BLACK

**SIZES**  
STD

**FABRIC**  
Main fabric: 57%Merino, 43% Polypropylene - 215 g/m²

**ÖKO-TEX/BLUESIGN**  
OEKO-TEX® approved main fabric

- Soft pile sherpa fleece located on button down ear flaps for added warmth in colder weather



990

558

## 79706 HH LIFA MERINO NECK

\$23.00

lifa |

**COLORS**  
558 STONE BLUE, 990 BLACK

**SIZES**  
STD

**FABRIC**  
Main fabric: 57%Merino, 43% Polypropylene - 215 g/m²

**ÖKO-TEX/BLUESIGN**  
OEKO-TEX® approved main fabric

- Lifa® Stay Warm Technology
- Lifa® Merino
- Flatlock seams for extra comfort





bluesign  
ready



590

## 75108 HH LIFA MAX CREWNECK

lifa

**COLORS**  
590 NAVY

**SIZES**  
XS-5XL

**FABRIC**  
Main fabric: 100% Polypropylene 230 g/m²

**ÖKO-TEX/BLUESIGN**  
OEKO-TEX® approved main fabric & bluesign® approved main fabric

- Lifa® Stay Warm Technology
- Lifa® Max
- No shoulder seams
- No side seams
- Flatlock seams for extra comfort

\$75.00



bluesign  
ready



590

## 75508 HH LIFA MAX PANT

lifa

**COLORS**  
590 NAVY

**SIZES**  
XS-5XL

**FABRIC**  
Main fabric: 100% Polypropylene 230 g/m²

**ÖKO-TEX/BLUESIGN**  
OEKO-TEX® approved main fabric & bluesign® approved main fabric

- Lifa® Stay Warm Technology
- Lifa® Max
- Elastic in waist for perfect fit and freedom of movement
- Gusset at crotch
- Flatlock seams for extra comfort

\$65.00



bluesign  
ready



590

## 75118 HH LIFA MAX CREWNECK TALL

lifa

**COLORS**  
590 NAVY

**SIZES**  
M-2XL

**FABRIC**  
Main fabric: 100% Polypropylene 230 g/m²

**ÖKO-TEX/BLUESIGN**  
OEKO-TEX® approved main fabric & bluesign® approved main fabric

- Lifa® Stay Warm Technology
- Lifa® Max
- No shoulder seams
- No side seams
- Flatlock seams for extra comfort

\$85.00







590

**75518 HH LIFA MAX PANT TALL****\$70.00**

lifa |

**COLORS**  
590 NAVY**SIZES**  
M-2XL**FABRIC**  
Main fabric: 100% Polypropylene 230 g/m²**ÖKO-TEX/BLUESIGN**  
OEKO-TEX® approved main fabric & bluesign® approved main fabric

- Lifa® Stay Warm Technology
- Lifa® Max
- Elastic in waist for perfect fit and freedom of movement
- Gusset at crotch
- Flatlock seams for extra comfort



590

**79710 HH LIFA MAX BALACLAVA****\$25.00**

lifa |

**COLORS**  
590 NAVY**SIZES**  
STD**FABRIC**  
Main fabric: 100% Polypropylene 230 g/m²**ÖKO-TEX/BLUESIGN**  
OEKO-TEX® approved main fabric & bluesign® approved main fabric

- Lifa® Stay Warm Technology
- Lifa® Max
- Flatlock seams for extra comfort



590

**79708 HH LIFA MAX BEANIE****\$23.00**

lifa |

**COLORS**  
590 NAVY**SIZES**  
STD**FABRIC**  
Main fabric: 100% Polypropylene 230 g/m²**ÖKO-TEX/BLUESIGN**  
OEKO-TEX® approved main fabric & bluesign® approved main fabric

- Lifa® Stay Warm Technology
- Lifa® Max
- Double main fabric
- Flatlock seams for extra comfort



590

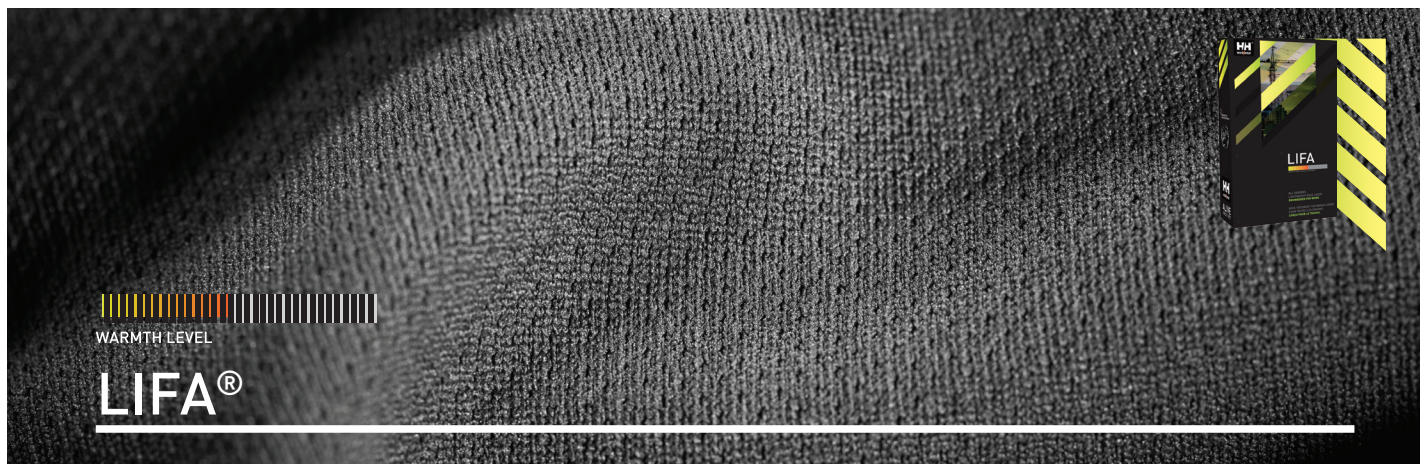
**79709 HH LIFA MAX NECK****\$21.00**

lifa |

**COLORS**  
590 NAVY**SIZES**  
STD**FABRIC**  
Main fabric: 100% Polypropylene 230 g/m²**ÖKO-TEX/BLUESIGN**  
OEKO-TEX® approved main fabric & bluesign® approved main fabric

- Lifa® Stay Warm Technology
- Lifa® Max
- Flatlock seams for extra comfort





bluesign  
ready

## 75105 HH LIFA CREWNECK

\$50.00

lifa



**COLORS**  
990 BLACK

**SIZES**  
XS-4XL

**FABRIC**  
Main fabric: 100% Polypropylene - 125 g/m²

**ÖKO-TEX/BLUESIGN**  
OEKO-TEX® approved main fabric & bluesign® approved main fabric

- HH@Lifa
- No shoulder seams
- No side seams
- Flatlock seams for extra comfort

990



bluesign  
ready

## 75505 HH LIFA PANT

\$40.00

lifa



**COLORS**  
990 BLACK

**SIZES**  
XS-4XL

**FABRIC**  
Main fabric: 100% Polypropylene - 125 g/m²

**ÖKO-TEX/BLUESIGN**  
OEKO-TEX® approved main fabric & bluesign® approved main fabric

- HH@Lifa
- Elastic in waist for perfect fit and freedom of movement
- Gusset at crotch
- Flatlock seams for extra comfort

990









A close-up photograph of a person wearing a dark navy blue Helly Hansen midlayer jacket. The jacket features a full-length front zipper with bright orange pull tabs. A smaller zippered pocket is visible on the left chest, also with an orange pull tab. The person is holding a white clipboard or folder in front of them. The background is slightly blurred, showing what appears to be an industrial or construction setting with metal railings.

# MIDLAYER





990

## 73232 KENSINGTON LIFALOFT VEST

\$130.00

lifaLoft

YKK

bluesign

### COLORS

590 NAVY, 990 BLACK

### SIZES

XS-4XL

### FABRIC

Main fabric: 100% Polyester - 75 g/m<sup>2</sup>  
 Secondary fabric: Face: 92% Polyester,  
 8% Elastane - 305 g/m<sup>2</sup>  
 Insulation: 70% Polypropylene, 30% Polyester - 80 g/m<sup>2</sup>

### ÖKO-TEX/BLUESIGN

OEKO-TEX® approved main fabric & bluesign® approved product

- LIFALOFT™ insulation by PrimaLoft®
- Softshell fabric with membrane and DWR
- No shoulder seams
- High collar for comfort
- Brushed fleece inside collar
- YKK® front zipper with chin protector
- Hand pockets with YKK® zipper
- Hand pockets with brushed lining
- Inside stash pockets
- Adjustable hem with elastic drawcord inside hand pocket
- Extended back for improved comfort



990

481

## 74230 KENSINGTON HOODED SOFTSHELL JACKET

\$130.00

YKK

bluesign

### COLORS

481 CAMO, 990 BLACK

### SIZES

XS-4XL

### FABRIC

Main fabric: Face: 92% Polyester, 8% Elastane - 305 g/m<sup>2</sup>

### ÖKO-TEX/BLUESIGN

OEKO-TEX® approved main fabric & bluesign® approved product

### BREATHABILITY

5.000/5.000

- Softshell fabric with membrane and DWR
- No shoulder seams
- Adjustable hood with elastic drawcord
- YKK® front zipper with chin protector
- Chest pocket with YKK® zipper
- Hand pockets with YKK® zipper
- Hand pockets with brushed lining
- Inside stash pockets
- Articulated sleeves for optimal mobility
- Adjustable cuffs
- Adjustable hem with elastic drawcord inside hand pocket
- Extended back for improved comfort



990

## 74231 KENSINGTON SOFTSHELL JACKET

\$120.00

YKK

bluesign

### COLORS

990 BLACK

### SIZES

XS-4XL

### FABRIC

Main fabric: Face: 92% Polyester, 8% Elastane - 305 g/m<sup>2</sup>

### ÖKO-TEX/BLUESIGN

OEKO-TEX® approved main fabric & bluesign® approved product

### BREATHABILITY

5.000/5.000

- Softshell fabric with membrane and DWR
- No shoulder seams
- High collar for comfort
- Brushed fleece inside collar
- YKK® front zipper with chin protector
- Chest pocket with YKK® zipper
- Hand pockets with YKK® zipper
- Hand pockets with brushed lining
- Inside stash pockets
- Articulated sleeves for optimal mobility
- Adjustable cuffs
- Adjustable hem with elastic drawcord inside hand pocket
- Extended back for improved comfort



990

590

## 74240 W LUNA SOFTSHELL JACKET

\$120.00

YKK

bluesign

### COLORS

590 NAVY, 990 BLACK

### SIZES

XS-2XL

### FABRIC

Main fabric: Face: 92% Polyester, 8% Elastane - 305 g/m<sup>2</sup>

### ÖKO-TEX/BLUESIGN

OEKO-TEX® approved main fabric & bluesign® approved product

### BREATHABILITY

5.000/5.000

- Softshell fabric with membrane and DWR
- No shoulder seams
- High collar for comfort
- Brushed fleece inside collar
- YKK® front zipper with chin protector
- Hand pockets with YKK® zipper
- Hand pockets with brushed lining
- Inside stash pockets
- Articulated sleeves for optimal mobility
- Adjustable cuffs
- Adjustable hem with elastic drawcord inside hand pocket
- Extended back for improved comfort



bluesign®



990 950 919 590 229

## 74085 MANCHESTER 2.0 SOFTSHELL JACKET

**NEW** \$100.00

AVAILABLE IN OCTOBER

YKK

bluesign®

### COLORS

229 ALERT RED/EBONY, 590 NAVY, 919 GREY FOG/EBONY, 950 EBONY, 990 BLACK

### SIZES

XS-4XL

### FABRIC

Main fabric: 94% Polyester, 6% Elastane - 290 g/m²

### ÖKO-TEX/BLUESIGN

OEKO-TEX® approved main fabric &amp; bluesign® approved product

- Softshell fabric with membrane and DWR
- No shoulder seams
- Brushed fleece inside collar
- YKK® front zipper with chin protector
- Hand pockets with YKK® zipper
- Hand pockets with brushed lining
- Articulated sleeves for optimal mobility
- Adjustable cuffs
- Adjustable hem with elastic drawcord inside hand pocket
- Extended back for improved comfort
- Reflective details



bluesign®



990 950 910 590 220

## 74086 MANCHESTER 2.0 ZIP IN SOFTSHELL VEST

**NEW** \$85.00

AVAILABLE IN OCTOBER

YKK

bluesign®

### COLORS

220 ALERT RED, 590 NAVY, 910 GREY FOG, 950 EBONY, 990 BLACK

### SIZES

XS-4XL

### FABRIC

Main fabric: 94% Polyester, 6% Elastane - 290 g/m²

### ÖKO-TEX/BLUESIGN

OEKO-TEX® approved main fabric &amp; bluesign® approved product

- Softshell fabric with membrane and DWR
- No shoulder seams
- Brushed fleece inside collar
- YKK® front zipper with chin protector
- Hand pockets with YKK® zipper
- Hand pockets with brushed lining
- Adjustable hem with elastic drawcord inside hand pocket
- Extended back for improved comfort
- Reflective details



## 72065 MANCHESTER ZIP IN FLEECE JACKET

**\$80.00**

Zip in compatible with 71043 &amp; 71045

YKK



990

**COLORS**  
990 BLACK

### SIZES

XS-4XL

### FABRIC

Main fabric: 100% Polyester, 320 g/m²

### ÖKO-TEX/BLUESIGN

OEKO-TEX® approved main fabric

- Brushed polyester inside collar
- Hand pockets with YKK® zipper
- Zip in compatible with 71043 Manchester Shell Jacket and 71045 Manchester Shell Coat



## 72095 MANCHESTER 2.0 ZIP IN FLEECE VEST

**NEW** \$60.00

AVAILABLE IN OCTOBER

Zip in compatible with 71043 &amp; 71045

YKK

bluesign®



590

990

**COLORS**  
590 NAVY, 990 BLACK

### SIZES

XS-4XL

### FABRIC

Main fabric: 100% Polyester - 320 g/m²

### ÖKO-TEX/BLUESIGN

OEKO-TEX® approved main fabric

- YKK® front zipper with chin protector
- Hand pockets with YKK® zipper
- Extended back for improved comfort





bluesign  
product

990

970

590

## 72026 OXFORD FLEECE JACKET

\$90.00



### COLORS

590 NAVY, 970 DARKGREY, 990 BLACK

### SIZES

S-4XL

### FABRIC

Main fabric: 100% Recycled Polyester - 251 g/m<sup>2</sup>

### ÖKO-TEX/BLUESIGN

OEKO-TEX® approved main fabric &amp; bluesign® approved product

- Polartec® Recycled fleece
- Double layer fabric in collar
- YKK® front zipper with chin protector
- Chest pocket with YKK® zipper
- Hand pockets with YKK® zipper
- Hand pockets with brushed lining
- Flatlock seams for extra comfort

bluesign  
product

990

590

## 72400 W LUNA FLEECE JACKET

\$90.00



### COLORS

590 NAVY, 990 BLACK

### SIZES

XS-2XL

### FABRIC

Main fabric: 100% Recycled Polyester - 251 g/m<sup>2</sup>

### ÖKO-TEX/BLUESIGN

OEKO-TEX® &amp; bluesign® approved product

- Polartec® Recycled fleece
- Double layer fabric in collar
- High collar for comfort
- No shoulder seams
- YKK® front zipper with chin protector
- Hand pockets with YKK® zipper
- Hand pockets with brushed lining
- Inside stash pockets
- Articulated sleeves for optimal mobility
- No side seams
- Adjustable hem with elastic drawcord inside hand pocket
- Extended back for improved comfort
- Flatlock seams for extra comfort

bluesign  
product

990

970

590

## 72097 OXFORD LIGHT FLEECE JACKET

\$60.00



### COLORS

590 NAVY, 970 DARKGREY, 990 BLACK

### SIZES

XS-4XL

### FABRIC

Main fabric: 100% Recycled Polyester - 159 g/m<sup>2</sup>

### ÖKO-TEX/BLUESIGN

OEKO-TEX® approved main fabric &amp; bluesign® approved product

- Polartec® Recycled fleece
- Double layer fabric in collar
- YKK® front zipper with chin protector
- Hand pockets with YKK® zipper
- Hand pockets with brushed lining
- Flatlock seams for extra comfort

bluesign  
product

990

## 72452 OXFORD LIGHT FLEECE PANT

\$50.00



### COLORS

990 BLACK

### SIZES

XS-4XL

### FABRIC

Main fabric: 100% Recycled Polyester - 159 g/m<sup>2</sup>

### ÖKO-TEX/BLUESIGN

OEKO-TEX® approved main fabric &amp; bluesign® approved product

- Polartec® Recycled fleece
- Elastic in waist for perfect fit and freedom of movement
- Gusset at crotch
- Flatlock seams for extra comfort





# FLAME RETARDANT



**70030 HORTEN JACKET****\$65.00**

200

**COLORS**  
200 ORANGE**SIZES**  
XS-4XL**FABRIC**  
Main: 100% Polyester - 410 g/m<sup>2</sup>, PVC coated

- 100% Waterproof fabric and construction
- Flame retardant
- Oil resistant

**70530 HORTEN BIB****\$65.00**

200

**COLORS**  
200 ORANGE**SIZES**  
XS-2XL**FABRIC**  
Main: 100% Polyester - 410 g/m<sup>2</sup>, PVC coated

- .45 P-Series PVC on high-quality cotton canvas, 450g
- Adjustable heavy duty suspender
- Generously cut with side gusset for easy entry
- MicroWeld seam construction

**75090 FARGO CREWNECK****\$130.00**

560

**COLORS**  
560 ROYAL BLUE**SIZES**  
XS-5XL**FABRIC**  
48.5% M Arimid® / 48.5% FR Rayon/ 3% Anti Static Single Jersey Knit 230 g/m<sup>2</sup>**CERTIFICATION**

- NFPA 2112-2018
- ASTM F1506-18
- CAT 2
- ATPV: 9,2 cal/cm<sup>2</sup>
- Ebt: 8,3 cal/cm<sup>2</sup>
- HAF: 79%
- NFPA 70E

- Anti-static
- Highly resistant to abrasion
- Moisture moving material
- Flatlock seams
- Double knit cuffs

**75490 FARGO PANT****\$120.00**

560

**COLORS**  
560 ROYAL BLUE**SIZES**  
XS-5XL**FABRIC**  
48.5% M Arimid® / 48.5% FR Rayon/ 3% Anti Static Single Jersey Knit 230 g/m<sup>2</sup>**CERTIFICATION**

- NFPA 2112-2018
- ASTM F1506-18
- CAT 2
- ATPV: 9,2 cal/cm<sup>2</sup>
- Ebt: 8,3 cal/cm<sup>2</sup>
- HAF: 79%
- NFPA 70E

- Anti-static
- Highly resistant to abrasion
- Moisture moving material
- Flatlock seams
- Double knit cuffs
- Fly front

## 79892 FARGO BALACLAVA

\$38.00



560

**COLORS**  
560 ROYAL BLUE

**SIZES**  
STD

**FABRIC**  
48.5% M Arimid® / 48.5% FR Rayon/ 3% Anti Static Single Jersey Knit 230 g/m²

**CERTIFICATION**

- NFPA 2112-2018
- ASTM F1506-18
- CAT 2
- ATPV: 9,2 cal/cm²
- Ebt: 8,3 cal/cm²
- HAF: 79%
- NFPA 70E

- Ribbed expandable face opening
- Anti-static
- Highly resistant to abrasion
- Moisture moving material
- Flatlock seams

## 79895 FARGO BEANIE

\$36.00



560

**COLORS**  
560 ROYAL BLUE

**SIZES**  
STD

**FABRIC**  
48.5% M Arimid® / 48.5% FR Rayon/ 3% Anti Static Single Jersey Knit 230 g/m²

**CERTIFICATION**

- NFPA 2112-2018
- ASTM F1506-18
- CAT 2
- ATPV: 9,2 cal/cm²
- Ebt: 8,3 cal/cm²
- HAF: 79%
- NFPA 70E

- Generous neck coverage
- Anti-static
- Highly resistant to abrasion
- Moisture moving material
- Flatlock seams

## 79893 FARGO NECK GAITER

\$36.00



560

**COLORS**  
560 ROYAL BLUE

**SIZES**  
STD

**FABRIC**  
48.5% M Arimid® / 48.5% FR Rayon/ 3% Anti Static Single Jersey Knit 230 g/m²

**CERTIFICATION**

- NFPA 2112-2018
- ASTM F1506-18
- CAT 2
- ATPV: 9,2 cal/cm²
- Ebt: 8,3 cal/cm²
- HAF: 79%
- NFPA 70E

- Double layer
- Anti-static
- Highly resistant to abrasion
- Moisture moving material
- Flatlock seams









# ACCESSORIES



# HEADWEAR

## 79821 OXFORD TRAPPER CAP

NEW

\$50.00

AVAILABLE IN OCTOBER

**COLORS**  
990 BLACK

**SIZES**  
S/M, L/XL

**FABRIC**  
Main fabric: 100% Cotton, 100% Polyester

- 5 panel cap
- Weather resistant main fabric
- Soft pile located on button down ear flaps for added warmth



990

## 79892 FARGO BALACLAVA

\$38.00

**COLORS**  
560 ROYAL BLUE

**SIZES**  
STD

**FABRIC**  
48.5% M Arimid® / 48.5% FR Rayon/ 3% Anti Static Single Jersey Knit 230 g/m²

- CERTIFICATION**
- NFPA 2112-2018
  - ASTM F1506-18
  - CAT 2
  - ATPV: 9.2 cal/cm²
  - Ebt: 8.3 cal/cm²
  - HAF: 79%
  - NFPA 70E

- Ribbed expandable face opening
- Anti-static
- Highly resistant to abrasion
- Moisture moving material
- Flatlock seams



560

## 79895 FARGO BEANIE

\$36.00

**COLORS**  
560 ROYAL BLUE

**SIZES**  
STD

**FABRIC**  
48.5% M Arimid® / 48.5% FR Rayon/ 3% Anti Static Single Jersey Knit 230 g/m²

- CERTIFICATION**
- NFPA 2112-2018
  - ASTM F1506-18
  - CAT 2
  - ATPV: 9.2 cal/cm²
  - Ebt: 8.3 cal/cm²
  - HAF: 79%
  - NFPA 70E

- Generous neck coverage
- Anti-static
- Highly resistant to abrasion
- Moisture moving material
- Flatlock seams



560



## 79893 FARGO NECK GAITER

\$36.00



560

**COLORS**  
560 ROYAL BLUE

**SIZES**  
STD

**FABRIC**  
48.5% M Aramid® / 48.5% FR Rayon/ 3% Anti Static Single Jersey Knit 230 g/m²

**CERTIFICATION**

- NFPA 2112-2018
- ASTM F1506-18
- CAT 2
- ATPV: 9,2 cal/cm²
- Ebt: 8,3 cal/cm²
- HAF: 79%
- NFPA 70E

- Double layer
- Anti-static
- Highly resistant to abrasion
- Moisture moving material
- Flatlock seams

## 79365 HH LIFA MERINO PRO BALACLAVA

**NEW**

\$60.00

AVAILABLE IN OCTOBER



990

**lifa** |

**COLORS**  
990 BLACK

**SIZES**  
STD

**FABRIC**  
Main fabric: 57%Merino, 43% Polypropylene - 215 g/m²  
Secondary Main fabric: 100% Polyamide - 270 g/m²

**ÖKO-TEX/BLUESIGN**  
OEKO-TEX® approved main fabric

- Lifa® Stay Warm Technology
- Lifa® Merino
- Mesh ventilation for added breathability
- Flatlock seams for extra comfort



## 79707 HH LIFA MERINO BALACLAVA

\$26.00



990

**lifa** |

**COLORS**  
990 BLACK

**SIZES**  
STD

**FABRIC**  
Main fabric: 57%Merino, 43% Polypropylene - 215 g/m²

**ÖKO-TEX/BLUESIGN**  
OEKO-TEX® approved main fabric

- Lifa® Stay Warm Technology
- Lifa® Merino
- Flatlock seams for extra comfort



## 79705 HH LIFA MERINO BEANIE

\$25.00



558

990

**lifa** |

**COLORS**  
558 STONE BLUE, 990 BLACK

**SIZES**  
STD

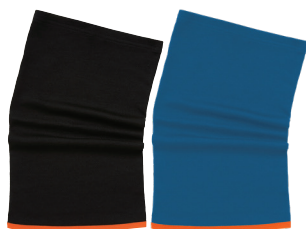
**FABRIC**  
Main fabric: 57%Merino, 43% Polypropylene - 215 g/m²

**ÖKO-TEX/BLUESIGN**  
OEKO-TEX® approved main fabric

- Soft pile sherpa fleece located on button down ear flaps for added warmth in colder weather







990

558

## 79706 HH LIFA MERINO NECK

lifa

**COLORS**  
558 STONE BLUE, 990 BLACK

**SIZES**  
STD

**FABRIC**  
Main fabric: 57%Merino, 43% Polypropylene - 215 g/m²

**ÖKO-TEX/BLUESIGN**  
OEKO-TEX® approved main fabric

- Lifa® Stay Warm Technology
- Lifa® Merino
- Flatlock seams for extra comfort



\$23.00

bluesign



590

## 79710 HH LIFA MAX BALACLAVA

lifa

**COLORS**  
590 NAVY

**SIZES**  
STD

**FABRIC**  
Main fabric: 100% Polypropylene 230 g/m²

**ÖKO-TEX/BLUESIGN**  
OEKO-TEX® approved main fabric & bluesign® approved main fabric

- Lifa® Stay Warm Technology
- Lifa® Max
- Flatlock seams for extra comfort



\$25.00

bluesign



590

## 79708 HH LIFA MAX BEANIE

lifa

**COLORS**  
590 NAVY

**SIZES**  
STD

**FABRIC**  
Main fabric: 100% Polypropylene 230 g/m²

**ÖKO-TEX/BLUESIGN**  
OEKO-TEX® approved main fabric & bluesign® approved main fabric

- Lifa® Stay Warm Technology
- Lifa® Max
- Double main fabric
- Flatlock seams for extra comfort



\$23.00

bluesign



590

## 79709 HH LIFA MAX NECK

lifa

**COLORS**  
590 NAVY

**SIZES**  
STD

**FABRIC**  
Main fabric: 100% Polypropylene 230 g/m²

**ÖKO-TEX/BLUESIGN**  
OEKO-TEX® approved main fabric & bluesign® approved main fabric

- Lifa® Stay Warm Technology
- Lifa® Max
- Flatlock seams for extra comfort



\$21.00



## 79816 SVOLVÆR SOU'WESTER

\$24.00



310

**COLORS**  
310 LIGHT YELLOW

**SIZES**  
STD

**FABRIC**  
Main fabric: 100% Polyester - 410 g/m² - PU coated

- Waterproof fabric and construction
- Lining
- Ear flaps
- Chin strap



481

990



991

## 79802 KENSINGTON CAP

\$30.00

**COLORS**  
481 CAMO, 990 BLACK, 991 BLACK

**SIZES**  
STD

**FABRIC**  
100% Cotton

- Full crown construction
- Snap back
- One size fits most

## 79806 KENSINGTON FLAT BRIM

\$30.00



970

**COLORS**  
970 DARK GREY

**SIZES**  
STD

**FABRIC**  
100% Cotton

- Flat brim
- Full crown construction
- One size fits most

## 79812 KENSINGTON WOOL BEANIE

\$42.00



990

970

590

**COLORS**  
590 NAVY, 970 DARK GREY, 990 BLACK

**SIZES**  
STD

**FABRIC**  
Main fabric: 80% Lambswool 20% Nylon  
Lining: 100% Polyester

- Knitted wool beanie
- Fleece headband for extra warmth
- HH Workwear logo





## 79811 KENSINGTON BEANIE

\$21.00



**COLORS**  
290 DARK ORANGE, 480 ARMY GREEN, 590 NAVY, 930 GREY MELANGE, 990 BLACK

- Knitted polyester beanie
- HH Workwear logo

**SIZES**  
STD

**FABRIC**  
Main fabric: 100% Acrylic

480 290 990 930 590



## 79883 MANCHESTER BEANIE

\$20.00



**COLORS**  
595 NAVY/LIGHT BLUE, 679 PINK/BLACK, 972 DARK GREY/ ORANGE, 993 BLACK/YELLOW

- Knitted beanie
- Reversible design
- Water repellent fiber

**SIZES**  
STD

**FABRIC**  
Main fabric: 100% Acrylic



## 79830 HH WW BEANIE

\$18.00



**COLORS**  
290 DARK ORANGE, 990 BLACK

- HH Workwear Logo

**SIZES**  
STD

**FABRIC**  
Main fabric: 100% Acrylic

990 290

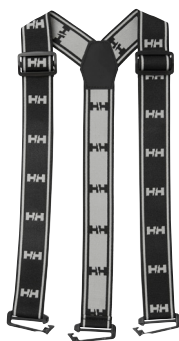


# ACCESSORIES

bluesign®  
approved

## 79550 HH WW SUSPENDERS 2.0

\$24.00



990

**COLORS**  
990 BLACK

- Adjustable suspenders
- Embossed Helly Hansen WW logo

**SIZES**  
STD

**FABRIC**  
Main fabric: Synthetic Woven

**ÖKO-TEX/BLUESIGN**  
OEKO-TEX® approved main fabric & bluesign® approved main fabric

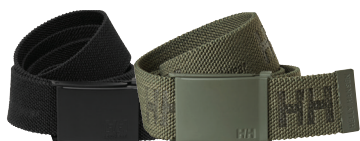
## 79528 HH LOGO WEBBING BELT

\$20.00



360

290



990

480

**COLORS**  
290 DARK ORANGE, 360 YELLOW, 480 ARMY GREEN, 990 BLACK

- Full stretch
- Buckle with HH WW logo
- Width: 1.5"

**SIZES**  
STD

**FABRIC**  
Main fabric: 96% Cotton, 4% Spandex Stretch Twill

## 79569 KNEEPAD STANDARD

\$16.00



990

**COLORS**  
990 BLACK

- 240mm x 147mm x 20mm
- Lightweight fabric

**SIZES**  
STD

**FABRIC**  
100% PE foam





**79692 GLOVE LINER**

**\$10.00**

**COLORS**  
990 BLACK

**SIZES**  
STD

**FABRIC**  
Shell: 100% Acrylic

590

---



# BAGS



990

## 79579 KENSINGTON TROLLEY 95L

\$295.00

YKK

**COLORS**  
990 BLACK

**SIZES**  
STD

**FABRIC**  
Main fabric: 100% Polyester - 466 g/m²

- 1-stage telescoping anodized aluminum handle
- One front pockets for easy organization
- 1 main compartment with elastic straps
- 3 separated internal compartments
- Large 84mm wheels roll smoothly and easily over uneven terrain
- Wheels are easily replaceable with standard in-line skate wheels
- Grab handles on top/side/bottom
- ID card pocket
- 95L [fully expanded]
- Height 30.3" Width 16.5" Depth 15.9"
- 9.85 lbs.



990

## 79578 KENSINGTON TROLLEY 45L

\$230.00

YKK

**COLORS**  
990 BLACK

**SIZES**  
STD

**FABRIC**  
Main fabric: 100% Polyester - 466 g/m²

- Carry-on compatible with most airlines
- 2-stage telescoping anodized aluminum handle
- One front pockets for easy organization
- 1 main compartment with elastic straps
- 2 separated internal compartments
- Large 84mm wheels roll smoothly and easily over uneven terrain
- Wheels are easily replaceable with standard in-line skate wheels
- Grab handles on top/side/bottom
- ID card pocket
- 45L [fully expanded]
- Height 21.6" Width 14.9" Depth 11.8"
- 6.28 lbs.



990

## 79583 WORK DAY BACKPACK

\$150.00

YKK

**COLORS**  
990 BLACK

**SIZES**  
STD

**FABRIC**  
Main fabric: 98% Polyester, 2% PVC

- YKK® zippers
- Main compartment has a padded tablet pocket, one internal pocket and one water bottle pocket
- First aid kit pocket
- Dedicated padded Laptop compartment
- Two front pockets
- Two open side pockets
- Sternum strap
- Packable hip straps
- Carry-on compatible with most airlines
- Loops for tools
- D - ring
- Grab handles on top
- 27 L
- Length 20.8" Width 13.0" Depth 7.0"
- 2.64 lbs.





481

990

590

## 79584 OXFORD BACKPACK 20L

\$110.00

YKK

### COLORS

481 CAMO, 590 NAVY, 990 BLACK

### SIZES

STD

### FABRIC

Main fabric: 100% Polyester - 497 g/m<sup>2</sup>

- Laptop compartment
- Inside stash pockets
- Multiple pockets
- External pocket with key-hook
- ID card pocket
- Carry-on compatible with most airlines
- Grab handle on top
- 20 L
- Length 12.6"
- Width 6.3"
- Depth 17.7"
- 1.76 lbs



990

## 79575 HH DUFFEL BAG 120L

\$135.00

YKK

### COLORS

990 BLACK

### SIZES

STD

### FABRIC

Main fabric: 100% Polyvinyl - 550 g/m<sup>2</sup>

- Water resistant fabric
- YKK® zippers
- Shoe compartment outside
- Padded tablet pockets inside
- First aid kit pocket
- Padded and adjustable shoulder straps
- Carry handle
- ID card pocket
- Length: 29.9" Width 15.7"



990

## 79574 HH DUFFEL BAG 90L

\$125.00

YKK

### COLORS

990 BLACK

### SIZES

STD

### FABRIC

Main fabric: 100% Polyvinyl - 550 g/m<sup>2</sup>

- Water resistant fabric
- YKK® zippers
- Shoe compartment outside
- Padded tablet pockets inside
- First aid kit pocket
- Padded and adjustable shoulder straps
- Carry handle
- ID card pocket
- Length: 28.5" Width 14.1"



990

## 79573 HH DUFFEL BAG 70L

\$115.00

YKK

### COLORS

990 BLACK

### SIZES

STD

### FABRIC

Main fabric: 100% Polyvinyl - 550 g/m<sup>2</sup>

- Water resistant fabric
- YKK® zippers
- Shoe compartment outside
- Padded tablet pockets inside
- First aid kit pocket
- Padded and adjustable shoulder straps
- Carry handle
- ID card pocket
- Length: 24.8" Width 13.4"





79572 HH DUFFEL BAG 50L

\$105.00

YKK

COLORS

299 DARK ORANGE, 481 CAMO, 590 NAVY, 990 BLACK

SIZES

STD

FABRIC

Main fabric: 100% Polyvinyl - 550 g/m²

- Water resistant fabric
- YKK® zippers
- Shoe compartment outside
- Padded tablet pockets inside
- First aid kit pocket
- Padded and adjustable shoulder straps
- Carry handle
- ID card pocket
- Length: 22.4" Width 11.8"







# WORKWEAR / NA SIZE CHARTS

Helly Hansen protective clothing is designed and manufactured in such a way that it does not have any effect on the user's health or hygiene. The design guarantees a correct fit and protection for the body when used correctly.

The design and material offer function and comfort.

The material offers good fade-resistance, stability, strength and durability, to ensure that the garments have a long life, even with heavy use and many washes.

Size grading is based on body measurements in centimeter, see the size guide. All garments are properly marked on garment labels and on external labels to indicate the information required for the standard.

## MEN / BODY MEASUREMENTS

Sizes	XS		S		M		L		XL	
	cm	inch	cm	inch	cm	inch	cm	inch	cm	inch
Chest	88	34.5	91	36	95-99	37.5-39	104-108	41-42.5	112-115	44-45.5
Waist	76	30	79	31	84-86	33-34	91-97	36-38	99-104	39-41
Hip	94	37	98	38.5	102-105	40-41.5	109-114	43-45	117-122	46-48
Inside Leg	77	30.5	80	31.5	81	32	84	33	86	34

## MEN / PANTS (TRADESMAN PANTS)

	cm	inch	cm	inch	cm	inch	cm	inch	cm	inch	cm	inch	cm	inch	cm	inch	cm	inch	cm	inch	cm	inch	
Waist	71	28	76	30	76	30	76	30	81	32	81	32	81	32	81	32	86	34	86	34	86	34	
Inside Leg	76	30	76	30	81	32	86	34	76	30	81	32	86	34	91	36	76	30	81	32	86	34	

	cm	inch	cm	inch	cm	inch
Waist	107	42	112	44	112	44
Inside Leg	81	32	76	30	81	32

## WOMENS / BODY MEASUREMENTS

Sizes	XS		S		M		L		XL		2XL		3XL	
	cm	inch	cm	inch	cm	inch	cm	inch	cm	inch	cm	inch	cm	inch
Body height	160	63	164	64.5	168	66	172	67.5	176	69.5	180	71	184	72.5
Chest	84	33	88	34.5	92	36	100	39.5	108	42.5	116	45.5	124	48.5
Waist	68	27	72	28.5	76	30	84	33	92	36	100	39	108	42.5
Hip	92	36	96	38	100	39.5	108	42.5	116	45.5	124	48.5	132	52
Inside Leg	76	30	78	30.5	80	31.5	82	32.5	84	33	86	34	88	34.5

## WOMENS / PANTS

Size	4	6	8	10	12	14	16	18
Waist (inches)	26	28	30	31	33	34	36	38
Inside Leg (inches)	37	38.5	40	41.75	43	44.75	46.5	48

\*ALL PANT WAIST SIZES COME IN 30" OR 32" INSEAM FOR WOMEN

## HATS

Size	S	M	L	XL	2XL
Europe	55-56	57-58	59-60	61-62	63-64
UK	6 3/4 - 6 7/8	7 - 7 1/8	7 1/4 - 7 3/8	7 1/2 - 7 5/8	7 3/4 - 7 7/8
US	7	7 1/8 - 7 1/4	7 3/8 - 7 1/2	7 5/8 - 7 3/4	7 7/8 - 8

## SOCKS

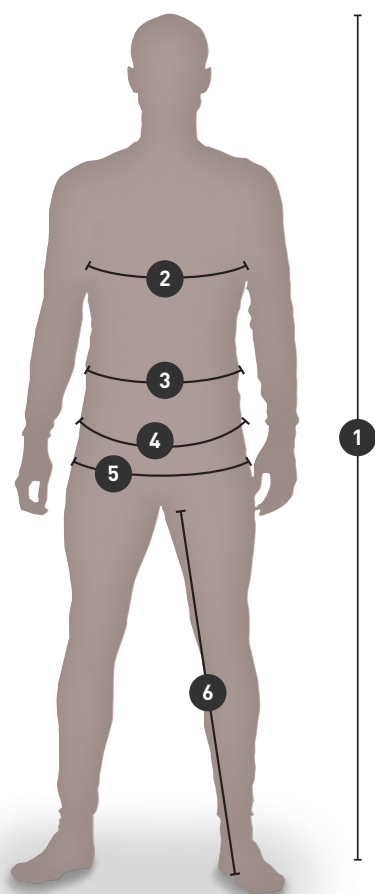
Size	S	M	L	XL
US	5-6.5	7-8.5	9-11.5	11-12.5
Europe	37-39	40-42	43-45	46-48



2XL		3XL		4XL		5XL		6XL	
cm	inch	cm	inch	cm	inch	cm	inch	cm	inch
119-123	47-48.5	127-131	50-51.5	135-138	53-54.5	142-146	56-57.5	147-152	58-60
107-112	42-44	114-119	45-47	122-127	48-50	130-135	51-53	137-142	54-56
126-129	49.5-51	133-137	52.5-54	141-145	55.5-57	149-152	58.5-60	156-160	61.5-63
89	35	89	35	89	35	89	35	89	35

cm	inch	cm	inch	cm	inch	cm	inch	cm	inch	cm	inch	cm	inch	cm	inch	cm	inch	cm	inch	cm	inch	cm	inch
86	34	91	36	91	36	91	36	91	36	97	38	97	38	97	38	97	38	101	40	101	40	101	40
91	36	76	30	81	32	86	34	91	36	76	30	81	32	86	34	91	36	76	30	81	32	86	34

## HOW TO MEASURE



**1: BODY HEIGHT**

**2: CHEST**

**3: WAIST** (AT BELLY-BUTTON HEIGHT)

**4: WAISTBAND** (WHERE YOUR PANTS' WAISTBAND IS PLACED)

**5: HIP**

**6: INSEAM**

**CHECK YOUR BODY MEASUREMENTS AS INSTRUCTED AND COMPARE WITH THE DATA IN THE TABLE.**

**CHEST:** With arms relaxed at sides, measure around fullest part of chest.

**WAIST:** Measure around natural waistline, smallest part of waist.

**HIPS:** Standing with legs together, measure around fullest part of hips.

**INSIDE LEG:** Measure inside length of your leg from crotch to bottom of



# INDEX / STYLE NAME

## INDEX

ALNA POLAR BIB CSA.....	84	KENSINGTON TROLLEY BAG 45L.....	112
ALNA POLAR PARKA CSA.....	84	KENSINGTON TROLLEY BAG 95L.....	112
ALTA CONSTRUCTION PANT CSA.....	64	KENSINGTON WINTER JACKET.....	36, 85
ALTA RAIN BIB.....	64	KENSINGTON WOOL BEANIE.....	39, 108
ALTA RAIN JACKET.....	63	KENSINGTON ZIP HOODIE.....	37
ALTA RAIN JACKET CSA.....	64	LOGO WEBBING BELT.....	65, 110
ALTA SHELL BIB.....	63	MANCHESTER 2.0 SOFTSHELL JACKET.....	49, 98
ALTA SHELL JACKET CSA.....	63	MANCHESTER 2.0 SOFTSHELL VEST.....	50, 98
ALTA SHELL PANT.....	63	MANCHESTER 2.0 ZIP IN FLEECE VEST.....	50, 98
ALTA SOFTSHELL JACKET CSA.....	64	MANCHESTER BEANIE.....	53, 65, 109
ALTA WINTER BIB CSA.....	62	MANCHESTER CONSTRUCTION PANT.....	50
ALTA WINTER JACKET CSA.....	62	MANCHESTER HOODIE.....	52
ALTA WINTER PANT.....	62	MANCHESTER LONGSLEEVE.....	52
ARMOUR BIB.....	78	MANCHESTER POLO.....	53
ARMOUR JACKET.....	78	MANCHESTER RAIN JACKET.....	49, 69
BERG JACKET.....	85	MANCHESTER RAIN PANT.....	49, 70
BERG PANT.....	86	MANCHESTER SERVICE PANT.....	51
BIFROST PARKA.....	83	MANCHESTER SERVICE SHORT.....	51
BIFROST SUIT.....	83	MANCHESTER SHELL JACKET.....	48, 69
ENGRAM DOUBLE BIB PANT.....	79	MANCHESTER SHELL PANT.....	49, 69
ENGRAM JACKET.....	79	MANCHESTER SWEATSHIRT.....	52
FARGO BALACLAVA.....	102, 105	MANCHESTER WINTER JACKET.....	48, 86
FARGO BEANIE.....	102, 105	MANCHESTER WINTER PANT.....	48, 86
FARGO CREWNECK.....	101	MANCHESTER ZIP HOODIE.....	52
FARGO NECK GAITER.....	102, 106	MANCHESTER ZIP IN FLEECE JACKET.....	50, 98
FARGO PANT.....	101	MANCHESTER ZIP SWEATSHIRT.....	52
GALE JACKET.....	71	MANDAL BIB.....	76
GALE RAIN BIB.....	71	MANDAL JACKET.....	76
GALE RAIN PANT.....	71	MANDAL PANT.....	76
GLOVE LINER.....	111	OXFORD BACKPACK.....	43, 113
HH DUFFEL BAG 120L.....	113	OXFORD CONSTRUCTION PANT.....	42
HH DUFFEL BAG 50L.....	114	OXFORD FLEECE JACKET.....	41, 99
HH DUFFEL BAG 70L.....	113	OXFORD LIGHT FLEECE JACKET.....	41, 99
HH DUFFEL BAG 90L.....	113	OXFORD LIGHT FLEECE PANT.....	42, 99
HH LIFA CREWNECK.....	94	OXFORD LINED CONSTRUCTION PANT.....	42
HH LIFA MAX BEANIE.....	93, 107	OXFORD LINED JACKET.....	40
HH LIFA MAX BALACLAVA.....	93, 107	OXFORD LINED VEST.....	41
HH LIFA MAX CREWNECK.....	92	OXFORD SERVICE PANT.....	43
HH LIFA MAX CREWNECK TALL.....	92	OXFORD SHELL JACKET.....	40, 68
HH LIFA MAX NECK GAITER.....	93, 107	OXFORD SOFTSHELL JACKET.....	41
HH LIFA MAX PANT.....	92	OXFORD TRAPPER CAP.....	43, 105
HH LIFA MAX PANT TALL.....	93	OXFORD WINTER JACKET.....	40, 85
HH LIFA MERINO BALACLAVA.....	91, 106	OXFORD WORK PANT.....	42
HH LIFA MERINO BEANIE.....	91, 106	POTSDAM BIB.....	61
HH LIFA MERINO CREWNECK.....	89	POTSDAM INSULATOR JACKET.....	61
HH LIFA MERINO NECK GAITER.....	91, 107	POTSDAM JACKET ANSI.....	61
HH LIFA MERINO PANT.....	89	PROCESSING BIB.....	77
HH LIFA PANT.....	94	PROCESSING JACKET.....	77
HH WW BEANIE.....	109	ROAN ANORAK.....	80
HH WW PRO BALACLAVA.....	91, 106	STANDARD KNEEPAD.....	110
HH WW GRAPHIC HOODIE.....	58	STORM RAIN BIB.....	79
HH WW GRAPHIC LONGSLEEVE T-SHIRT.....	58	STORM RAIN JACKET.....	79
HH WW GRAPHIC SWEATSHIRT.....	58	SVOLVER SOUTHWESTER.....	77
HH WW GRAPHIC T-SHIRT.....	59	THOMPSON BIB.....	84
HIGHLINER BIB.....	80	VOSS JACKET.....	75
HIGHLINER JACKET.....	80	VOSS PANT.....	75
HORTEN BIB.....	101	W HH LIFA MERINO 1/2 ZIP.....	90
HORTEN JACKET.....	101	W HH LIFA MERINO CREWNECK.....	90
IMPERTECH BIB.....	73	W HH LIFA MERINO PANT.....	90
IMPERTECH JACKET.....	73	W LUNA CONSTRUCTION PANT.....	46
IMPERTECH LONG COAT.....	73	W LUNA FLEECE JACKET.....	46, 99
IMPERTECH PANT.....	74	W LUNA RAIN JACKET.....	46, 72
IMPERTECH SANITATION BIB.....	74	W LUNA RAIN PANT.....	46, 72
IMPERTECH SANITATION JACKET.....	74	W LUNA SERVICE PANT.....	47
KENSINGTON BEANIE.....	39, 109	W LUNA SHELL JACKET.....	45, 68
KENSINGTON CAP.....	39, 108	W LUNA SOFTSHELL JACKET.....	45, 97
KENSINGTON FLAT BRIM.....	39, 108	W LUNA WINTER JACKET.....	45, 85
KENSINGTON HOODED SOFTSHELL JACKET.....	37	W MANCHESTER CONSTRUCTION PANT.....	54
KENSINGTON LIFALOFT VEST.....	37	W MANCHESTER HOODIE.....	55
KENSINGTON LONGSLEEVE.....	38	W MANCHESTER LONGSLEEVE.....	56
KENSINGTON SHELL JACKET.....	36, 68	W MANCHESTER POLO.....	56
KENSINGTON SOFTSHELL.....	37	W MANCHESTER SERVICE PANT.....	54
KENSINGTON SWEATSHIRT.....	38	W MANCHESTER SHELL JACKET.....	54, 69
KENSINGTON TECH POLO.....	38	W MANCHESTER SWEATSHIRT.....	55
KENSINGTON T-SHIRT.....	38	W MANCHESTER T-SHIRT.....	56
		W MANCHESTER ZIP HOODIE.....	55



---

W MANCHESTER ZIP SWEATSHIRT .....	55
WAVERLEY PACKABLE SUIT .....	65
WEST COAST JACKET .....	80
WEYBURN PARKA .....	84
WORK DAY BACKPACK .....	112
WORK PANT SUSPENDERS 2.0 .....	110





**ALIVE**  
SINCE / 1877